



**INTERNATIONAL  
GEMOLOGICAL  
INSTITUTE**

**LABORATORY GROWN DIAMOND REPORT**

**IGI LABORATORY GROWN DIAMOND IDENTIFICATION REPORT**

May 31, 2022  
 IGI Report Number LG530215153  
 Description LABORATORY GROWN DIAMOND  
 Shape and Cutting Style CUT CORNERED RECTANGULAR  
 MODIFIED BRILLIANT  
 Measurements 5.40 X 3.85 X 2.61 MM

**GRADING RESULTS**

Carat Weight 0.50 CARAT  
 Color Grade F  
 Clarity Grade VS 2

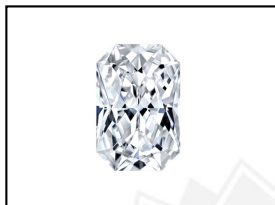
**ADDITIONAL GRADING INFORMATION**

Polish EXCELLENT  
 Symmetry VERY GOOD  
 Fluorescence NONE  
 Inscription(s) LABGROWN IGI LG530215153

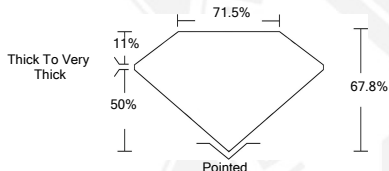
Comments: This Laboratory Grown Diamond was created by Chemical Vapor Deposition (CVD) growth process and may include post-growth treatment.  
 Type IIa

**ELECTRONIC COPY** LABORATORY GROWN  
DIAMOND REPORT

**LG530215153**



**LASERSCRIBE<sup>SM</sup>**  
Sample Images Used



**IGI LABORATORY GROWN  
DIAMOND ID REPORT**

May 31, 2022  
 IGI Report Number **LG530215153**  
**CUT CORNERED  
RECTANGULAR MODIFIED  
BRILLIANT**  
**5.40 X 3.85 X 2.61 MM**  
 Carat Weight 0.50 CARAT  
 Color Grade F  
 Clarity Grade VS 2  
 Polish EXCELLENT  
 Symmetry VERY GOOD  
 Fluorescence NONE  
 Inscription(s) LABGROWN IGI  
 LG530215153

Comments: This Laboratory Grown Diamond was created by Chemical Vapor Deposition (CVD) growth process and may include post-growth treatment.  
 Type IIa

**IGI LABORATORY GROWN  
DIAMOND ID REPORT**

May 31, 2022  
 IGI Report Number **LG530215153**  
**CUT CORNERED  
RECTANGULAR MODIFIED  
BRILLIANT**  
**5.40 X 3.85 X 2.61 MM**  
 Carat Weight 0.50 CARAT  
 Color Grade F  
 Clarity Grade VS 2  
 Polish EXCELLENT  
 Symmetry VERY GOOD  
 Fluorescence NONE  
 Inscription(s) LABGROWN IGI  
 LG530215153

Comments: This Laboratory Grown Diamond was created by Chemical Vapor Deposition (CVD) growth process and may include post-growth treatment.  
 Type IIa

THIS DOCUMENT WAS PRODUCED WITH THE FOLLOWING SECURITY MEASURES: SPECIAL DOCUMENT PAPER, INK SCREENS, WATERMARK, BACKGROUND DESIGN, HOLOGRAM AND OTHER SECURITY FEATURES NOT LISTED AND DO EXCEED DOCUMENT SECURITY INDUSTRY GUIDELINES.

For terms & conditions and to verify this report, please visit [www.igi.org](http://www.igi.org)