



LABORATORY GROWN DIAMOND REPORT

Measurements **9.85 X 7.05 X 4.45 MM**

GRADING RESULTS

Carat Weight	1.90 CARAT
Color Grade	F
Clarity Grade	VS 1

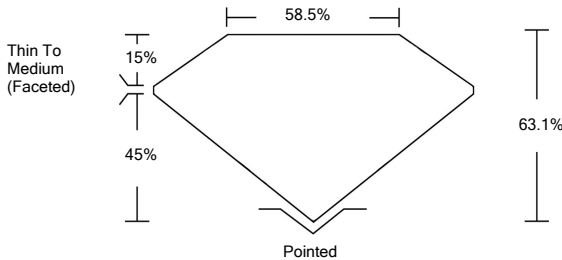
ADDITIONAL GRADING INFORMATION

Polish	EXCELLENT
Symmetry	EXCELLENT
Fluorescence	NONE

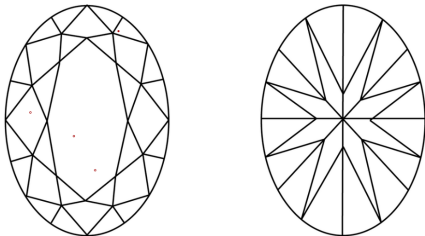
Inscription(s) **LABGROWN IGI LG530214759**
 Comments: This Laboratory Grown Diamond was created by Chemical Vapor Deposition (CVD) growth process and may include post-growth treatment.
 Type IIa

LG530214759

PROPORTIONS



CLARITY CHARACTERISTICS

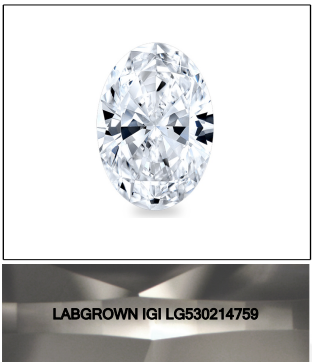


KEY TO SYMBOLS

Red symbols indicate internal characteristics.
Green symbols indicate external characteristics.

GRADING SCALES

COLOR GRADING SCALE	CL	NC	FT	VLT	LT
	COLORLESS D-F	NEAR COLORLESS G-J	FAINT K-M	VERY LIGHT N-R	LIGHT S-Z
CLARITY (10x) GRADING SCALE	FL	VVS	VS	SI	I
	FLAWLESS INTERNALLY FLAWLESS	VERY VERY SLIGHTLY INCLUDED	VERY SLIGHTLY INCLUDED	SLIGHTLY INCLUDED	INCLUDED



LASERSCRIBESM
Sample Image Used



© IGI 2020, International Gemological Institute

FD - 10 20

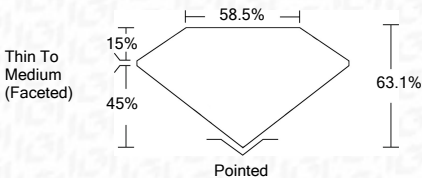
www.igi.org

LABORATORY GROWN DIAMOND REPORT

Shape and Cutting Style	OVAL BRILLIANT
Measurements	9.85 X 7.05 X 4.45 MM

GRADING RESULTS

Carat Weight	1.90 CARAT
Color Grade	F
Clarity Grade	VS 1



ADDITIONAL GRADING INFORMATION

Polish	EXCELLENT
Symmetry	EXCELLENT
Fluorescence	NONE
Inscription(s)	LABGROWN IGI LG530214759

Comments: This Laboratory Grown Diamond was created by Chemical Vapor Deposition (CVD) growth process and may include post-growth treatment.
Type IIa



IGI

MAY 30, 2022 IGI Report No. LGS90214759		OVAL BRILLIANT 1.90 CARAT 8.85 X 6.75 X 4.45 MM Color Grade Clarity Grade		VS 1 83.1% 55.5% Thin To Medium (Feetted)		Polished EXCELLENT EXCELLENT NONE LAB-GROWN IGI LG90214759		Comments: This Laboratory Grown Diamond was created using a high-pressure, high-temperature growth process and may include post-growth treatment.		Type I
--	--	---	--	---	--	---	--	--	--	--------

This Laboratory Grown Diamond was created by Chemical Vapor Deposition (CVD) growth process and may include post-growth treatment.