

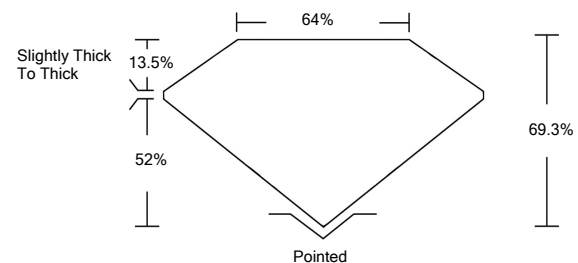


ELECTRONIC COPY

LABORATORY GROWN DIAMOND REPORT

LG530200692

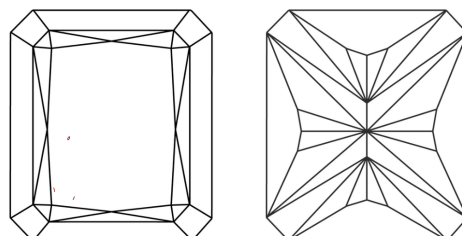
PROPORTIONS



GRADING SCALES

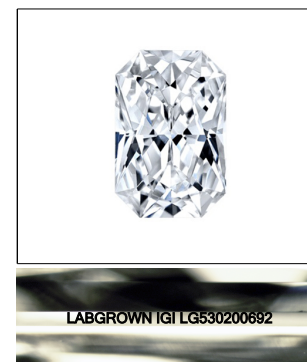
COLOR GRADING SCALE	CL	NC	FT	VLT	LT	
	COLORLESS D-F	NEAR COLORLESS G-J	FAINT K-M	VERY LIGHT N-R	LIGHT S-Z	
CLARITY (10x) GRADING SCALE	FL	IF	VVS	VS	SI	I
	FLAWLESS INTERNALLY FLAWLESS	VERY VERY SLIGHTLY INCLUDED	VERY SLIGHTLY INCLUDED	SLIGHTLY INCLUDED		INCLUDED

CLARITY CHARACTERISTICS



KEY TO SYMBOLS

Red symbols indicate internal characteristics.
Green symbols indicate external characteristics.



LASERSCRIBESM
Sample Image Used

May 27, 2022

IGI Report Number

LG530200692

Description

LABORATORY GROWN
DIAMOND

Shape and Cutting Style

CUT CORNERED
RECTANGULAR MODIFIED
BRILLIANT

Measurements

8.07 X 6.03 X 4.18 MM

GRADING RESULTS

Carat Weight

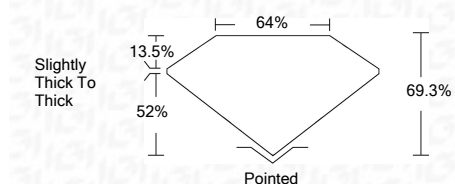
1.84 CARAT

Color Grade

F

Clarity Grade

VS 1



ADDITIONAL GRADING INFORMATION

Polish

EXCELLENT

Symmetry

EXCELLENT

Fluorescence

NONE

Inscription(s)

LABGROWN IGI LG530200692

Comments: This Laboratory Grown Diamond was created by Chemical Vapor Deposition (CVD) growth process and may include post-growth treatment.
Type IIa

May 27, 2022

IGI Report Number

LG530200692

Description

LABORATORY GROWN
DIAMOND

Shape and Cutting Style

CUT CORNERED
RECTANGULAR MODIFIED
BRILLIANT

Measurements

8.07 X 6.03 X 4.18 MM

GRADING RESULTS

Carat Weight

1.84 CARAT

Color Grade

F

Clarity Grade

VS 1

ADDITIONAL GRADING INFORMATION

Polish

EXCELLENT

Symmetry

EXCELLENT

Fluorescence

NONE

Inscription(s)

LABGROWN IGI LG530200692

Comments: This Laboratory Grown Diamond was created by Chemical Vapor Deposition (CVD) growth process and may include post-growth treatment.
Type IIa



IGI

IGI Report No. LG530200692	CUT CORNERED RECT. MODIFIED BRILLIANT	8.07 X 6.03 X 4.18 MM	1.84 CARAT	F	VS 1	69.3%	64%	Slightly Thick To Thick	Pointed	EXCELLENT	EXCELLENT	NONE	LABGROWN IGI LG530200692	Comments:	This Laboratory Grown Diamond was created by Chemical Vapor Deposition (CVD) growth process and may include post-growth treatment. Type IIa
----------------------------	---------------------------------------	-----------------------	------------	---	------	-------	-----	-------------------------	---------	-----------	-----------	------	--------------------------	-----------	--