



ELECTRONIC COPY

LABORATORY GROWN DIAMOND REPORT

May 30, 2022
IGI Report Number LG529286393
Description LABORATORY GROWN DIAMOND
Shape and Cutting Style SQUARE CUSHION MODIFIED BRILLIANT
Measurements 7.59 X 7.22 X 4.81 MM

GRADING RESULTS

Carat Weight 2.26 CARATS
Color Grade FANCY INTENSE PINK
Clarity Grade SI 1

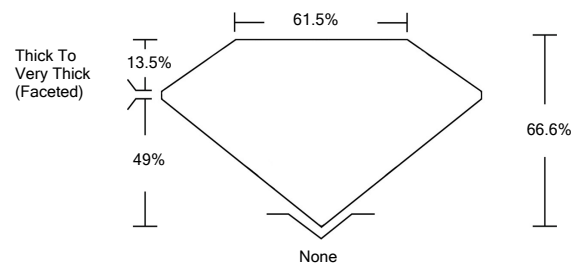
ADDITIONAL GRADING INFORMATION

Polish EXCELLENT
Symmetry EXCELLENT
Fluorescence SLIGHT
Inscription(s) LABGROWN IGI LG529286393

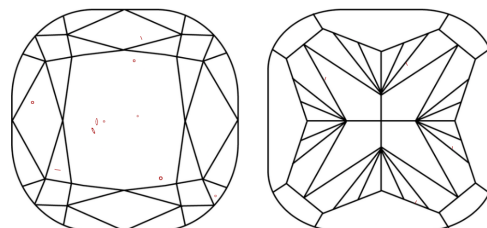
Comments: This Laboratory Grown Diamond was created by Chemical Vapor Deposition (CVD) growth process. Indications of post-growth treatment.

LG529286393

PROPORTIONS



CLARITY CHARACTERISTICS

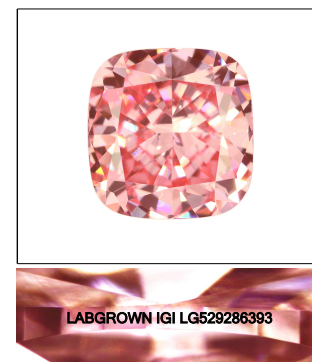


KEY TO SYMBOLS

Red symbols indicate internal characteristics. Green symbols indicate external characteristics.

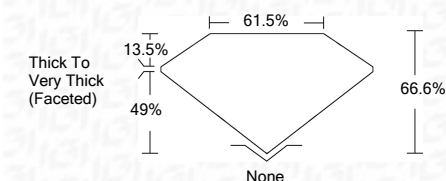
GRADING SCALES

Table with 5 columns for Color Grading Scale (CL, NC, FT, VLT, LT) and Clarity (10x) Grading Scale (FL, IF, VVS, VS, SI, I).



LASERSCRIBE SM Sample Image Used

May 30, 2022
IGI Report Number LG529286393
Description LABORATORY GROWN DIAMOND
Shape and Cutting Style SQUARE CUSHION MODIFIED BRILLIANT
Measurements 7.59 X 7.22 X 4.81 MM
GRADING RESULTS
Carat Weight 2.26 CARATS
Color Grade FANCY INTENSE PINK
Clarity Grade SI 1



ADDITIONAL GRADING INFORMATION

Polish EXCELLENT
Symmetry EXCELLENT
Fluorescence SLIGHT

Inscription(s) LABGROWN IGI LG529286393

Comments: This Laboratory Grown Diamond was created by Chemical Vapor Deposition (CVD) growth process. Indications of post-growth treatment.



May 30, 2022
IGI Report No. LG529286393
SQUARE CUSHION MODIFIED BRILLIANT
7.59 X 7.22 X 4.81 MM
2.26 CARATS
FANCY INTENSE PINK
SI 1
66.6%
61.5%
Thick To Very Thick (Faceted)
None
EXCELLENT
EXCELLENT
SLIGHT
LABGROWN IGI LG529286393
Comments: This Laboratory Grown Diamond was created by Chemical Vapor Deposition (CVD) growth process. Indications of post-growth treatment.