



ELECTRONIC COPY

LABORATORY GROWN DIAMOND REPORT

May 28, 2022
 IGI Report Number **LG528231036**
 Description **LABORATORY GROWN
DIAMOND**
 Shape and Cutting Style **SQUARE CUSHION BRILLIANT**
 Measurements **6.55 X 6.51 X 4.51 MM**

GRADING RESULTS

Carat Weight **1.50 CARAT**
 Color Grade **FANCY INTENSE BLUE**
 Clarity Grade **SI 1**

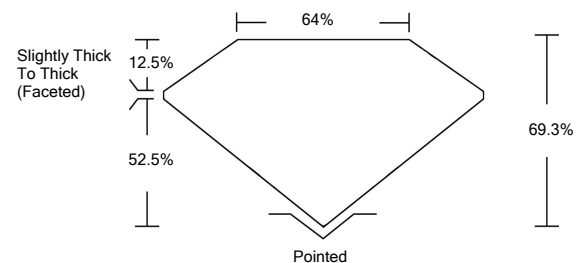
ADDITIONAL GRADING INFORMATION

Polish **EXCELLENT**
 Symmetry **EXCELLENT**
 Fluorescence **NONE**
 Inscription(s) **LABGROWN IGI LG528231036**

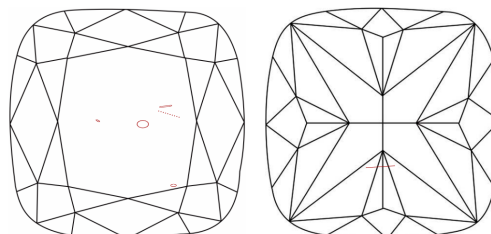
Comments: This Laboratory Grown Diamond was created by High Pressure High Temperature (HPHT) growth process. Indications of post-growth treatment.

LG528231036

PROPORTIONS



CLARITY CHARACTERISTICS

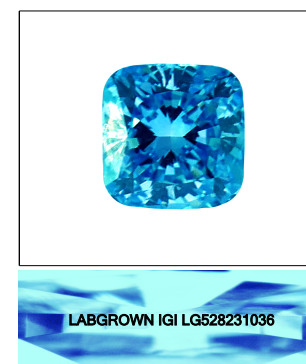


KEY TO SYMBOLS

Red symbols indicate internal characteristics.
 Green symbols indicate external characteristics.

GRADING SCALES

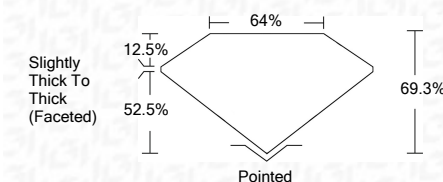
COLOR GRADING SCALE	CL	NC	FT	VL	LT	
	COLORLESS D-F	NEAR COLORLESS G-J	FAINT K-M	VERY LIGHT N-R	LIGHT S-Z	
CLARITY (10x) GRADING SCALE	FL	IF	VVS	VS	SI	I
	FLAWLESS INTERNALLY FLAWLESS	VERY VERY SLIGHTLY INCLUDED	VERY SLIGHTLY INCLUDED	SLIGHTLY INCLUDED	INCLUDED	



LASERSCRIBESM

Sample Image Used

May 28, 2022
 IGI Report Number **LG528231036**
 Description **LABORATORY GROWN
DIAMOND**
 Shape and Cutting Style **SQUARE CUSHION
BRILLIANT**
 Measurements **6.55 X 6.51 X 4.51 MM**
GRADING RESULTS
 Carat Weight **1.50 CARAT**
 Color Grade **FANCY INTENSE BLUE**
 Clarity Grade **SI 1**



ADDITIONAL GRADING INFORMATION

Polish **EXCELLENT**
 Symmetry **EXCELLENT**
 Fluorescence **NONE**
 Inscription(s) **LABGROWN IGI LG528231036**

Comments: This Laboratory Grown Diamond was created by High Pressure High Temperature (HPHT) growth process. Indications of post-growth treatment.



IGI

May 28, 2022	IGI Report No. LG528231036	SQUARE CUSHION BRILLIANT	6.55 X 6.51 X 4.51 MM	1.50 CARAT	FANCY INTENSE BLUE	SI 1	69.3%	64%	Slightly Thick To Thick (Faceted)	Pointed	EXCELLENT	EXCELLENT	NONE	LABGROWN IGI LG528231036
				Carat Weight			Depth	Table	Grids	Culet	Polish	Symmetry	Fluorescence	Inscription(s)

This Laboratory Grown Diamond was created by High Pressure High Temperature (HPHT) growth process. Indications of post-growth treatment.