



**INTERNATIONAL
GEMOLOGICAL
INSTITUTE**

LABORATORY GROWN DIAMOND REPORT

IGI LABORATORY GROWN DIAMOND IDENTIFICATION REPORT

May 28, 2022
 IGI Report Number **LG528230345**
 Description **LABORATORY GROWN DIAMOND**
 Shape and Cutting Style **ROUND BRILLIANT**
 Measurements **6.15 - 6.20 X 3.85 MM**

GRADING RESULTS

Carat Weight **0.90 CARAT**
 Color Grade **FANCY INTENSE GREENISH BLUE**
 Clarity Grade **SI 1**
 Cut Grade **IDEAL**

ADDITIONAL GRADING INFORMATION

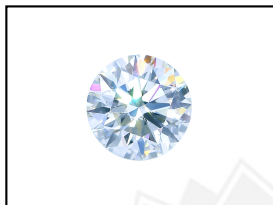
Polish **EXCELLENT**
 Symmetry **EXCELLENT**
 Fluorescence **NONE**
 Inscription(s) **LABGROWN IGI LG528230345**

Comments: This Laboratory Grown Diamond was created by High Pressure High Temperature (HPHT) growth process.
 Indications of post-growth treatment.

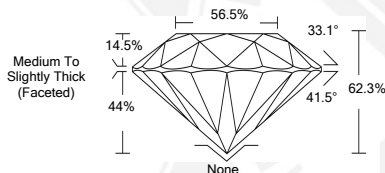
ELECTRONIC COPY

**LABORATORY GROWN
DIAMOND REPORT**

LG528230345



LASERSCRIBESM
Sample Images Used



**IGI LABORATORY GROWN
DIAMOND ID REPORT**

May 28, 2022
 IGI Report Number **LG528230345**
ROUND BRILLIANT
6.15 - 6.20 X 3.85 MM
 Carat Weight **0.90 CARAT**
 Color Grade **FANCY INTENSE GREENISH BLUE**
 Clarity Grade **SI 1**
 Cut Grade **IDEAL**
 Polish **EXCELLENT**
 Symmetry **EXCELLENT**
 Fluorescence **NONE**
 Inscription(s) **LABGROWN IGI LG528230345**

Comments: This Laboratory Grown Diamond was created by High Pressure High Temperature (HPHT) growth process.
 Indications of post-growth treatment.

**IGI LABORATORY GROWN
DIAMOND ID REPORT**

May 28, 2022
 IGI Report Number **LG528230345**
ROUND BRILLIANT
6.15 - 6.20 X 3.85 MM
 Carat Weight **0.90 CARAT**
 Color Grade **FANCY INTENSE GREENISH BLUE**
 Clarity Grade **SI 1**
 Cut Grade **IDEAL**
 Polish **EXCELLENT**
 Symmetry **EXCELLENT**
 Fluorescence **NONE**
 Inscription(s) **LABGROWN IGI LG528230345**

Comments: This Laboratory Grown Diamond was created by High Pressure High Temperature (HPHT) growth process.
 Indications of post-growth treatment.

THIS DOCUMENT WAS PRODUCED WITH THE FOLLOWING SECURITY MEASURES: SPECIAL DOCUMENT PAPER, INK SCREENS, WATERMARK, BACKGROUND DESIGN, HOLOGRAM AND OTHER SECURITY FEATURES NOT LISTED AND DO EXCEED DOCUMENT SECURITY INDUSTRY GUIDELINES.

For terms & conditions and to verify this report, please visit www.igi.org