



# INTERNATIONAL GEMOLOGICAL INSTITUTE

ELECTRONIC COPY

## LABORATORY GROWN DIAMOND REPORT

LG528229719

### LABORATORY GROWN DIAMOND REPORT

#### IGI LABORATORY GROWN DIAMOND IDENTIFICATION REPORT

May 24, 2022  
IGI Report Number LG528229719  
Description LABORATORY GROWN DIAMOND  
Shape and Cutting Style ROUND BRILLIANT  
Measurements 4.35 - 4.37 X 2.83 MM

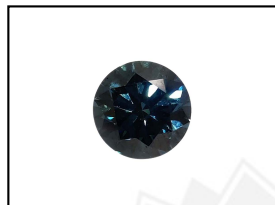
#### GRADING RESULTS

Carat Weight 0.34 CARAT  
Color Grade FANCY VIVID BLUE  
Clarity Grade I 1  
Cut Grade VERY GOOD

#### ADDITIONAL GRADING INFORMATION

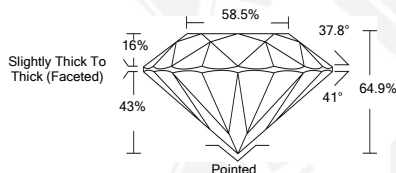
Polish EXCELLENT  
Symmetry EXCELLENT  
Fluorescence NONE  
Inscription(s) LABGROWN IGI LG528229719

Comments: As Grown - No indication of post-growth treatment.  
This Laboratory Grown Diamond was created by High Pressure High Temperature (HPHT) growth process.



LABGROWN IGI LG528229719

**LASERSCRIBE** SM  
Sample Images Used



#### IGI LABORATORY GROWN DIAMOND ID REPORT

May 24, 2022  
IGI Report Number LG528229719  
ROUND BRILLIANT  
4.35 - 4.37 X 2.83 MM  
Carat Weight 0.34 CARAT  
Color Grade FANCY VIVID BLUE  
Clarity Grade I 1  
Cut Grade VERY GOOD  
Polish EXCELLENT  
Symmetry EXCELLENT  
Fluorescence NONE  
Inscription(s) LABGROWN IGI LG528229719

Comments: As Grown - No indication of post-growth treatment.  
This Laboratory Grown Diamond was created by High Pressure High Temperature (HPHT) growth process.

#### IGI LABORATORY GROWN DIAMOND ID REPORT

May 24, 2022  
IGI Report Number LG528229719  
ROUND BRILLIANT  
4.35 - 4.37 X 2.83 MM  
Carat Weight 0.34 CARAT  
Color Grade FANCY VIVID BLUE  
Clarity Grade I 1  
Cut Grade VERY GOOD  
Polish EXCELLENT  
Symmetry EXCELLENT  
Fluorescence NONE  
Inscription(s) LABGROWN IGI LG528229719

Comments: As Grown - No indication of post-growth treatment.  
This Laboratory Grown Diamond was created by High Pressure High Temperature (HPHT) growth process.



THIS DOCUMENT WAS PRODUCED WITH THE FOLLOWING SECURITY MEASURES: SPECIAL DOCUMENT PAPER, INK SCREENS, WATERMARK, BACKGROUND DESIGN, HOLOGRAM AND OTHER SECURITY FEATURES NOT LISTED AND DO EXCEED DOCUMENT SECURITY INDUSTRY GUIDELINES.

For terms & conditions and to verify this report, please visit [www.igi.org](http://www.igi.org)