



ELECTRONIC COPY

LABORATORY GROWN DIAMOND REPORT

May 25, 2022
IGI Report Number LG528229242
Description LABORATORY GROWN DIAMOND
Shape and Cutting Style ROUND BRILLIANT
Measurements 8.20 - 8.27 X 4.87 MM

GRADING RESULTS

Carat Weight 2.02 CARATS
Color Grade FANCY VIVID PINK
Clarity Grade VS 1
Cut Grade IDEAL

ADDITIONAL GRADING INFORMATION

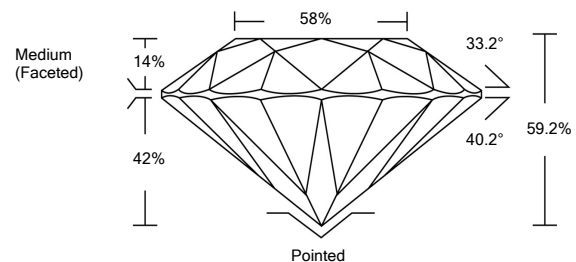
Polish EXCELLENT
Symmetry EXCELLENT
Fluorescence STRONG

Inscription(s) LABGROWN IGI LG528229242

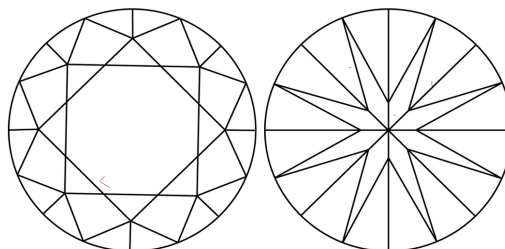
Comments: This Laboratory Grown Diamond was created by Chemical Vapor Deposition (CVD) growth process. Indications of post-growth treatment.

LG528229242

PROPORTIONS



CLARITY CHARACTERISTICS



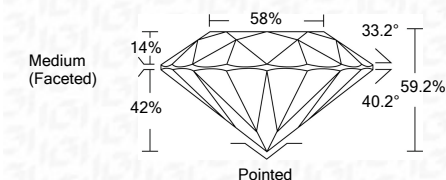
KEY TO SYMBOLS

Red symbols indicate internal characteristics. Green symbols indicate external characteristics.

GRADING SCALES

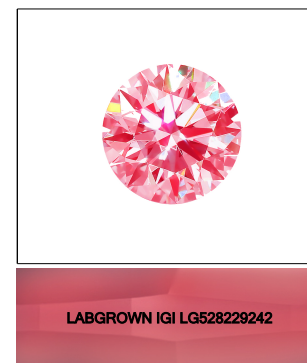
Table showing color grading scales (CL, NC, FT, VLT, LT) and clarity (10x) grading scales (FL, IF, VVS, VS, SI, I) with their corresponding descriptions.

May 25, 2022
IGI Report Number LG528229242
Description LABORATORY GROWN DIAMOND
Shape and Cutting Style ROUND BRILLIANT
Measurements 8.20 - 8.27 X 4.87 MM
GRADING RESULTS
Carat Weight 2.02 CARATS
Color Grade FANCY VIVID PINK
Clarity Grade VS 1
Cut Grade IDEAL



ADDITIONAL GRADING INFORMATION

Polish EXCELLENT
Symmetry EXCELLENT
Fluorescence STRONG
Inscription(s) LABGROWN IGI LG528229242
Comments: This Laboratory Grown Diamond was created by Chemical Vapor Deposition (CVD) growth process. Indications of post-growth treatment.



LABGROWN IGI LG528229242

LASERSCRIBE SM

Sample Image Used



IGI

May 25, 2022
IGI Report No. LG528229242
ROUND BRILLIANT
8.20 - 8.27 X 4.87 MM
Carat Weight 2.02 CARATS
Color Grade FANCY VIVID PINK
Clarity Grade VS 1
Depth 59.2%
Table 58%
Girdle Medium (Faceted)
Cut Pointed
Polish EXCELLENT
Symmetry EXCELLENT
Fluorescence STRONG
Inscription(s) LABGROWN IGI LG528229242
Comments: This Laboratory Grown Diamond was created by Chemical Vapor Deposition (CVD) growth process. Indications of post-growth treatment.