



ELECTRONIC COPY

LG528224208
Report verification at igi.org



May 16, 2024
IGI Report Number **LG528224208**
Description **LABORATORY GROWN DIAMOND**
Shape and Cutting Style **CUT CORNERED
RECTANGULAR MODIFIED
BRILLIANT**
Measurements **7.90 X 5.76 X 4.03 MM**
GRADING RESULTS
Carat Weight **1.71 CARAT**
Color Grade **FANCY VIVID BLUE**
Clarity Grade **VS 1**

May 16, 2024
IGI Report Number **LG528224208**
Description **LABORATORY GROWN DIAMOND**
Shape and Cutting Style **CUT CORNERED RECTANGULAR
MODIFIED BRILLIANT**
Measurements **7.90 X 5.76 X 4.03 MM**

GRADING RESULTS

Carat Weight **1.71 CARAT**
Color Grade **FANCY VIVID BLUE**
Clarity Grade **VS 1**

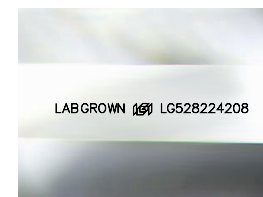
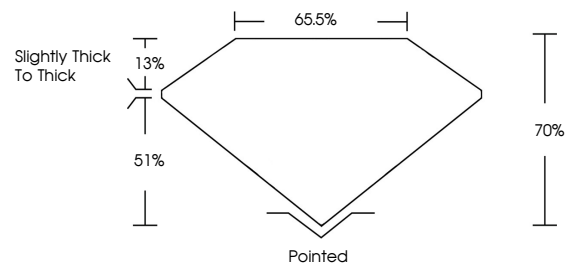
ADDITIONAL GRADING INFORMATION

Polish **EXCELLENT**
Symmetry **EXCELLENT**
Fluorescence **NONE**

Inscription(s) **LABGROWN (LGI) LG528224208**

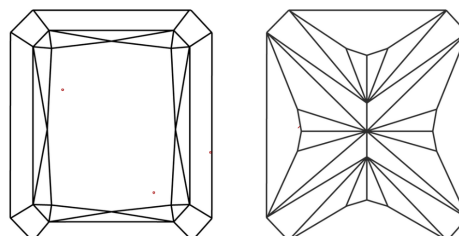
Comments: This Laboratory Grown Diamond was created by Chemical Vapor Deposition (CVD) growth process.
Indications of post-growth treatment.

PROPORTIONS



Sample Image Used

CLARITY CHARACTERISTICS



KEY TO SYMBOLS

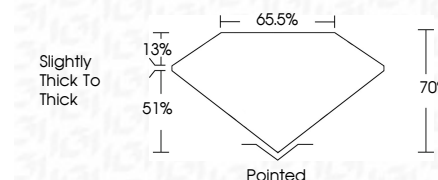
Red symbols indicate internal characteristics.
Green symbols indicate external characteristics.

COLOR

D E F G H I J Faint Very Light Light

CLARITY

IF	VS ¹⁻²	VS ¹⁻²	SI ¹⁻²	I ¹⁻³
Internally Flawless	Very Very Slightly Included	Very Slightly Included	Slightly Included	Included



ADDITIONAL GRADING INFORMATION

Polish **EXCELLENT**
Symmetry **EXCELLENT**
Fluorescence **NONE**
Inscription(s) **LABGROWN (LGI) LG528224208**

Comments: This Laboratory Grown Diamond was created by Chemical Vapor Deposition (CVD) growth process.
Indications of post-growth treatment.



IGI



May 16, 2024
IGI Report No. **LG528224208**
CUT CORNERED RECT. MODIFIED BRILLIANT
7.90 X 5.76 X 4.03 MM
Carat Weight **1.71 CARAT**
Color Grade **FANCY VIVID BLUE**
Clarity Grade **VS 1**
Depth **70%**
Table **66.0%**
Girdle **Slightly thick to Thick**
Culet **Pointed**
Polish **EXCELLENT**
Symmetry **EXCELLENT**
Fluorescence **NONE**
Inscription(s) **LABGROWN (LGI) LG528224208**
Comments: This Laboratory Grown Diamond was created by Chemical Vapor Deposition (CVD) growth process.
Indications of post-growth treatment.