

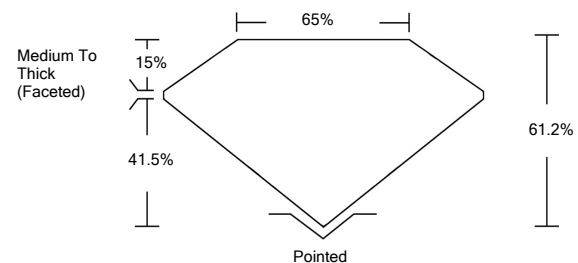


ELECTRONIC COPY

LABORATORY GROWN DIAMOND REPORT

LG526289023

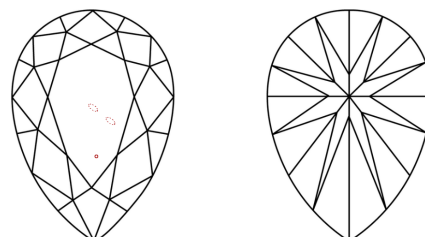
PROPORTIONS



GRADING SCALES

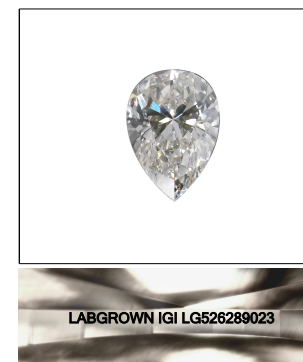
COLOR GRADING SCALE	CL	NC	FT	VLT	LT	
	COLORLESS D-F	NEAR COLORLESS G-J	FAINT K-M	VERY LIGHT N-R	LIGHT S-Z	
CLARITY (10x) GRADING SCALE	FL	IF	VVS	VS	SI	I
	FLAWLESS INTERNALLY FLAWLESS	VERY VERY SLIGHTLY INCLUDED	VERY SLIGHTLY INCLUDED	SLIGHTLY INCLUDED	INCLUDED	

CLARITY CHARACTERISTICS



KEY TO SYMBOLS

Red symbols indicate internal characteristics.
Green symbols indicate external characteristics.



LASERSCRIBESM
Sample Image Used

May 7, 2022

IGI Report Number **LG526289023**

Description **LABORATORY GROWN DIAMOND**

Shape and Cutting Style **PEAR BRILLIANT**

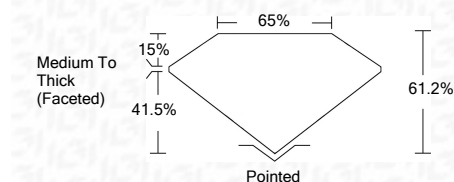
Measurements **11.48 X 7.42 X 4.54 MM**

GRADING RESULTS

Carat Weight **2.40 CARATS**

Color Grade **G**

Clarity Grade **VS 2**



ADDITIONAL GRADING INFORMATION

Polish **EXCELLENT**

Symmetry **EXCELLENT**

Fluorescence **NONE**

Inscription(s) **LABGROWN IGI LG526289023**

Comments: This Laboratory Grown Diamond was created by Chemical Vapor Deposition (CVD) growth process and may include post-growth treatment.
Type IIa

May 7, 2022

IGI Report Number **LG526289023**

Description **LABORATORY GROWN DIAMOND**

Shape and Cutting Style **PEAR BRILLIANT**

Measurements **11.48 X 7.42 X 4.54 MM**

GRADING RESULTS

Carat Weight **2.40 CARATS**

Color Grade **G**

Clarity Grade **VS 2**

ADDITIONAL GRADING INFORMATION

Polish **EXCELLENT**

Symmetry **EXCELLENT**

Fluorescence **NONE**

Inscription(s) **LABGROWN IGI LG526289023**

Comments: This Laboratory Grown Diamond was created by Chemical Vapor Deposition (CVD) growth process and may include post-growth treatment.
Type IIa



IGI

IGI Report No. LG526289023	2.40 CARATS	G
PEAR BRILLIANT	VS 2	61.2%
11.48 X 7.42 X 4.54 MM	65%	Medium To Thick (Faceted)
Carat Weight	Pointed	EXCELLENT
Color Grade	EXCELLENT	EXCELLENT
Clarity Grade	EXCELLENT	NONE
Depth	LABGROWN IGI	LG526289023
Table	Inscription(s)	
Girdle	Comments:	
Culet		
Polish		
Symmetry		
Fluorescence		
Inscription(s)		

This Laboratory Grown Diamond was created by Chemical Vapor Deposition (CVD) growth process and may include post-growth treatment.
Type IIa