



**INTERNATIONAL
GEMOLOGICAL
INSTITUTE**

LABORATORY GROWN DIAMOND REPORT

IGI LABORATORY GROWN DIAMOND IDENTIFICATION REPORT

May 9, 2022
 IGI Report Number LG526288854
 Description LABORATORY GROWN DIAMOND
 Shape and Cutting Style HEART BRILLIANT
 Measurements 5.76 X 6.29 X 3.62 MM

GRADING RESULTS

Carat Weight 0.71 CARAT
 Color Grade G
 Clarity Grade SI 1

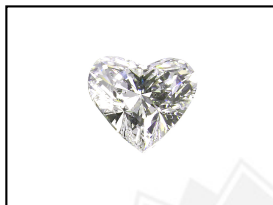
ADDITIONAL GRADING INFORMATION

Polish EXCELLENT
 Symmetry VERY GOOD
 Fluorescence NONE
 Inscription(s) LABGROWN IGI LG526288854

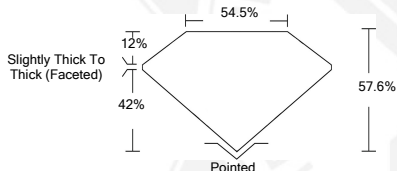
Comments: This Laboratory Grown Diamond was created by Chemical Vapor Deposition (CVD) growth process and may include post-growth treatment. Type IIa

**ELECTRONIC COPY LABORATORY GROWN
DIAMOND REPORT**

LG526288854



LASERSCRIBESM
Sample Images Used



**IGI LABORATORY GROWN
DIAMOND ID REPORT**

May 9, 2022
 IGI Report Number **LG526288854**
HEART BRILLIANT
5.76 X 6.29 X 3.62 MM
 Carat Weight 0.71 CARAT
 Color Grade G
 Clarity Grade SI 1
 Polish EXCELLENT
 Symmetry VERY GOOD
 Fluorescence NONE
 Inscription(s) LABGROWN IGI
 LG526288854

Comments: This Laboratory Grown Diamond was created by Chemical Vapor Deposition (CVD) growth process and may include post-growth treatment. Type IIa

**IGI LABORATORY GROWN
DIAMOND ID REPORT**

May 9, 2022
 IGI Report Number **LG526288854**
HEART BRILLIANT
5.76 X 6.29 X 3.62 MM
 Carat Weight 0.71 CARAT
 Color Grade G
 Clarity Grade SI 1
 Polish EXCELLENT
 Symmetry VERY GOOD
 Fluorescence NONE
 Inscription(s) LABGROWN IGI
 LG526288854

Comments: This Laboratory Grown Diamond was created by Chemical Vapor Deposition (CVD) growth process and may include post-growth treatment. Type IIa

THIS DOCUMENT WAS PRODUCED WITH THE FOLLOWING SECURITY MEASURES: SPECIAL DOCUMENT PAPER, INK SCREENS, WATERMARK, BACKGROUND DESIGN, HOLOGRAM AND OTHER SECURITY FEATURES NOT LISTED AND DO EXCEEDED DOCUMENT SECURITY INDUSTRY GUIDELINES.

For Terms & Conditions and to verify this report, please visit www.igi.org