



**INTERNATIONAL
GEMOLOGICAL
INSTITUTE**

LABORATORY GROWN DIAMOND REPORT

IGI LABORATORY GROWN DIAMOND IDENTIFICATION REPORT

May 7, 2022
 IGI Report Number LG526287765
 Description LABORATORY GROWN DIAMOND
 Shape and Cutting Style PEAR BRILLIANT
 Measurements 7.46 X 4.47 X 2.63 MM

GRADING RESULTS

Carat Weight 0.52 CARAT
 Color Grade E
 Clarity Grade VS 2

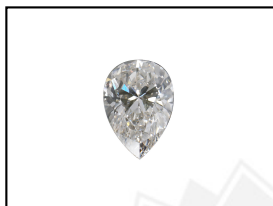
ADDITIONAL GRADING INFORMATION

Polish VERY GOOD
 Symmetry VERY GOOD
 Fluorescence NONE
 Inscription(s) LABGROWN IGI LG526287765

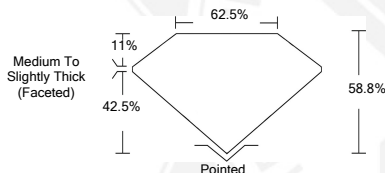
Comments: This Laboratory Grown Diamond was created by Chemical Vapor Deposition (CVD) growth process and may include post-growth treatment.
 Type IIa

**ELECTRONIC COPY LABORATORY GROWN
DIAMOND REPORT**

LG526287765



LASERSCRIBESM
Sample Images Used



**IGI LABORATORY GROWN
DIAMOND ID REPORT**

May 7, 2022
 IGI Report Number **LG526287765**
PEAR BRILLIANT
7.46 X 4.47 X 2.63 MM
 Carat Weight 0.52 CARAT
 Color Grade E
 Clarity Grade VS 2
 Polish VERY GOOD
 Symmetry VERY GOOD
 Fluorescence NONE
 Inscription(s) LABGROWN IGI
 LG526287765

Comments: This Laboratory Grown Diamond was created by Chemical Vapor Deposition (CVD) growth process and may include post-growth treatment.
 Type IIa

**IGI LABORATORY GROWN
DIAMOND ID REPORT**

May 7, 2022
 IGI Report Number **LG526287765**
PEAR BRILLIANT
7.46 X 4.47 X 2.63 MM
 Carat Weight 0.52 CARAT
 Color Grade E
 Clarity Grade VS 2
 Polish VERY GOOD
 Symmetry VERY GOOD
 Fluorescence NONE
 Inscription(s) LABGROWN IGI
 LG526287765

Comments: This Laboratory Grown Diamond was created by Chemical Vapor Deposition (CVD) growth process and may include post-growth treatment.
 Type IIa

THIS DOCUMENT WAS PRODUCED WITH THE FOLLOWING SECURITY MEASURES: SPECIAL DOCUMENT PAPER, INK SCREENS, WATERMARK, BACKGROUND DESIGN, HOLOGRAM AND OTHER SECURITY FEATURES NOT LISTED AND DO EXCEEDED DOCUMENT SECURITY INDUSTRY GUIDELINES.

For Terms & Conditions and to verify this report, please visit www.igi.org