



ELECTRONIC COPY

LABORATORY GROWN DIAMOND REPORT

May 10, 2022

IGI Report Number **LG526287312**

Description	LABORATORY GROWN DIAMOND
Shape and Cutting Style	CUSHION MODIFIED BRILLIANT
Measurements	7.22 X 6.58 X 4.31 MM

GRADING RESULTS

Carat Weight	1.50 CARAT
Color Grade	I
Clarity Grade	VVS 2

ADDITIONAL GRADING INFORMATION

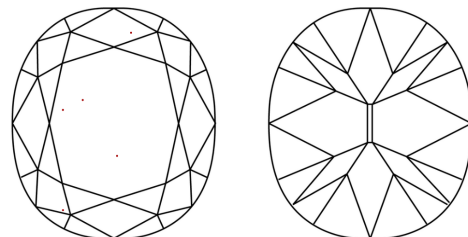
Polish	EXCELLENT
Symmetry	EXCELLENT
Fluorescence	NONE
Inscription(s)	LABGROWN IGI LG526287312

Comments: This Laboratory Grown Diamond was created by Chemical Vapor Deposition (CVD) growth process and may include post-growth treatment.
Type IIa

Diagram illustrating the proportions of a diamond-shaped stone (LG526287312). The stone is labeled "Large" and "Medium To Slightly Thick Faceted". The proportions are defined by the following dimensions:

- Width: 57%
- Height: 65.5%
- Depth: 42%
- Table: 20.5%

CLARITY CHARACTERISTICS



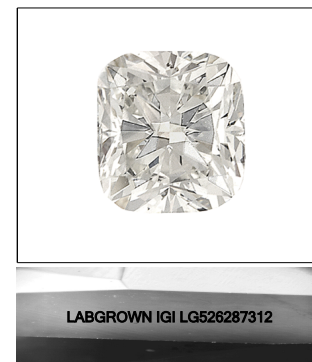
KEY TO SYMBOLS

Red symbols indicate internal characteristics.
Green symbols indicate external characteristics.

LABORATORY GROWN
DIAMOND REPORT

GRADING SCALES

COLOR GRADING SCALE	CL		NC	FT	VLT	LT
	COLORLESS D-F	NEAR COLORLESS G-J		FAINT K-M	VERY LIGHT N-R	LIGHT S-Z
CLARITY (10x) GRADING SCALE	FL	IF	VVS	VS	SI	I
	FLAWLESS INTERNALLY		VERY VERY SLIGHTLY INCLUDED	VERY SLIGHTLY INCLUDED	SLIGHTLY INCLUDED	INCLUDED



LASERSCRIBESM
Sample Image Used

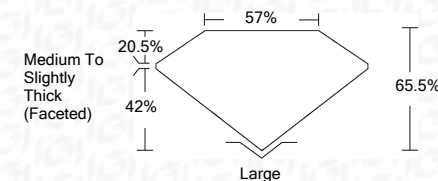


© IGI 2020, International Gemological Institute

FD - 10 20

LABORATORY GROWN DIAMOND REPORT

May 10, 2022	
IGI Report Number	LG526287312
Description	LABORATORY GROWN DIAMOND
Shape and Cutting Style	CUSHION MODIFIED BRILLIANT
Measurements	7.22 X 6.58 X 4.31 MM
GRADING RESULTS	
Carat Weight	1.50 CARAT
Color Grade	I
Clarity Grade	VVS 2



ADDITIONAL GRADING INFORMATION

Polish	EXCELLENT
Symmetry	EXCELLENT
Fluorescence	NONE
Inscription(s)	LABGROWN IGI LG526287312
Comments: This Laboratory Grown Diamond was created by Chemical Vapor Deposition (CVD) growth process and may include post-growth treatment.	
Type IIa	



May 10, 2022	
IGI Report No. LG62627312	
CUSHION MODIFIED BRILLIANT	
22.22 X 6.58 X 4.31 MM	1.50 CARAT
Carat Weight	
Color Grade	I
Clarity Grade	VS2
Depth	65.5%
Table	57%
Girdle	Medium to Slightly Thick (Faceted)
Culet	Large
Polish	EXCELLENT
Symmetry	EXCELLENT
Fluorescence	NONE
Comments:	LABGROWN IGI LG62627312
This Laboratory Grown Diamond was created by Chemical Vapor Deposition (CVD) growth process and may include post-growth treatments.	
Type Ila	

This Laboratory Grown Diamond was created by Chemical Vapor Deposition (CVD) growth process and may include post-growth treatment.