

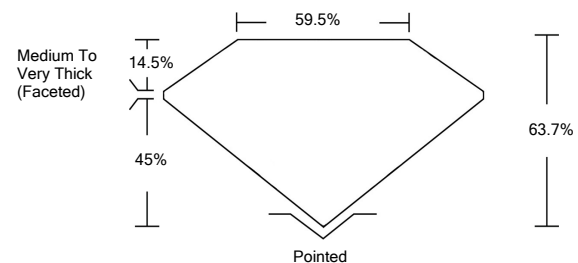


**ELECTRONIC COPY**

**LABORATORY GROWN DIAMOND REPORT**

LG526283192

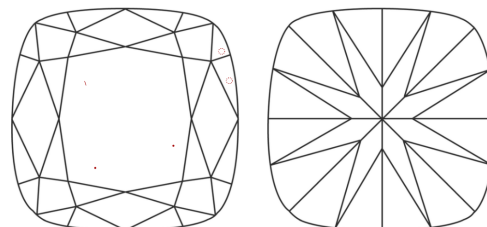
**PROPORTIONS**



**GRADING SCALES**

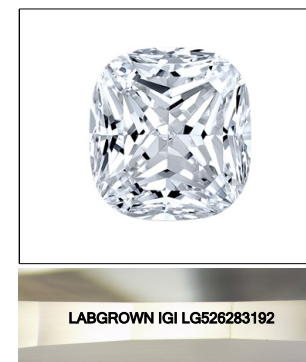
COLOR GRADING SCALE	CL	NC	FT	VL	LT	
	COLORLESS D-F	NEAR COLORLESS G-J	FAINT K-M	VERY LIGHT N-R	LIGHT S-Z	
CLARITY (10x) GRADING SCALE	FL	IF	VVS	VS	SI	I
	FLAWLESS INTERNALLY FLAWLESS	VERY VERY SLIGHTLY INCLUDED	VERY SLIGHTLY INCLUDED	SLIGHTLY INCLUDED	INCLUDED	

**CLARITY CHARACTERISTICS**



**KEY TO SYMBOLS**

Red symbols indicate internal characteristics.  
Green symbols indicate external characteristics.



LASERSCRIBE<sup>SM</sup>

Sample Image Used

May 3, 2022

IGI Report Number **LG526283192**

Description **LABORATORY GROWN DIAMOND**

Shape and Cutting Style **SQUARE CUSHION BRILLIANT**

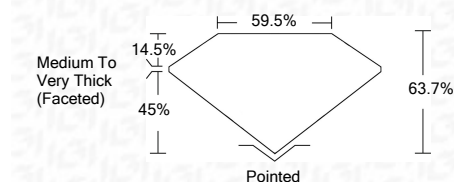
Measurements **7.28 X 7.13 X 4.54 MM**

**GRADING RESULTS**

Carat Weight **1.66 CARAT**

Color Grade **F**

Clarity Grade **VS 1**



**ADDITIONAL GRADING INFORMATION**

Polish **EXCELLENT**

Symmetry **EXCELLENT**

Fluorescence **NONE**

Inscription(s) **LABGROWN IGI LG526283192**

Comments: This Laboratory Grown Diamond was created by Chemical Vapor Deposition (CVD) growth process and may include post-growth treatment.  
Type IIa

May 3, 2022

IGI Report Number **LG526283192**

Description **LABORATORY GROWN DIAMOND**

Shape and Cutting Style **SQUARE CUSHION BRILLIANT**

Measurements **7.28 X 7.13 X 4.54 MM**

**GRADING RESULTS**

Carat Weight **1.66 CARAT**

Color Grade **F**

Clarity Grade **VS 1**

**ADDITIONAL GRADING INFORMATION**

Polish **EXCELLENT**

Symmetry **EXCELLENT**

Fluorescence **NONE**

Inscription(s) **LABGROWN IGI LG526283192**

Comments: This Laboratory Grown Diamond was created by Chemical Vapor Deposition (CVD) growth process and may include post-growth treatment.  
Type IIa



**IGI**



May 3, 2022	IGI Report No. LG526283192	1.66 CARAT	F
SQUARE CUSHION BRILLIANT	7.28 X 7.13 X 4.54 MM	63.7%	VS 1
Carat Weight	Medium To Very Thick (Faceted)	59.5%	Pointed
Color Grade	EXCELLENT		EXCELLENT
Clarity Grade	EXCELLENT		EXCELLENT
Depth	NONE		NONE
Table	LABGROWN IGI		LG526283192
Girdle	Inscription(s)		
Culet	Comments:		
Polish	This Laboratory Grown Diamond was created by Chemical Vapor Deposition (CVD) growth process and may include post-growth treatment.		
Symmetry	Type IIa		
Fluorescence			
Inscription(s)			