

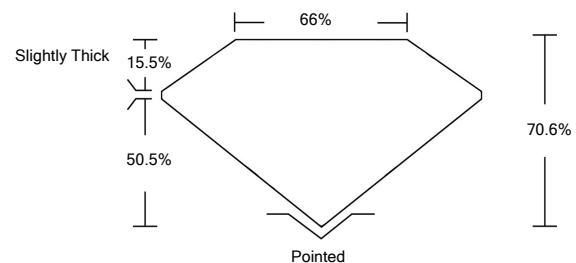


**ELECTRONIC COPY**

**LABORATORY GROWN DIAMOND REPORT**

LG526280351

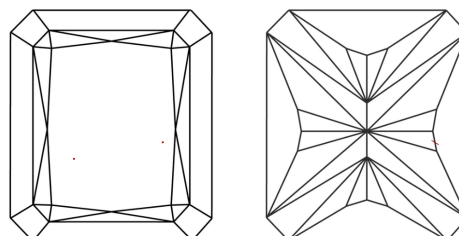
**PROPORTIONS**



**GRADING SCALES**

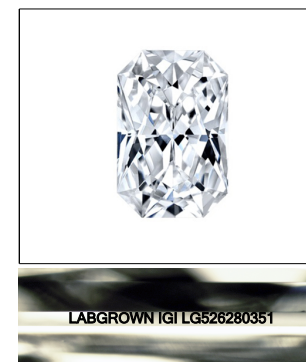
|                             |                              |                             |                        |                   |           |   |
|-----------------------------|------------------------------|-----------------------------|------------------------|-------------------|-----------|---|
| COLOR GRADING SCALE         | CL                           | NC                          | FT                     | VLT               | LT        |   |
|                             | COLORLESS D-F                | NEAR COLORLESS G-J          | FAINT K-M              | VERY LIGHT N-R    | LIGHT S-Z |   |
| CLARITY (10x) GRADING SCALE | FL                           | IF                          | VVS                    | VS                | SI        | I |
|                             | FLAWLESS INTERNALLY FLAWLESS | VERY VERY SLIGHTLY INCLUDED | VERY SLIGHTLY INCLUDED | SLIGHTLY INCLUDED | INCLUDED  |   |

**CLARITY CHARACTERISTICS**



**KEY TO SYMBOLS**

Red symbols indicate internal characteristics.  
Green symbols indicate external characteristics.



LASERSCRIBE<sup>SM</sup>

Sample Image Used

May 5, 2022

IGI Report Number **LG526280351**

Description **LABORATORY GROWN DIAMOND**

Shape and Cutting Style **CUT CORNERED RECTANGULAR MODIFIED BRILLIANT**

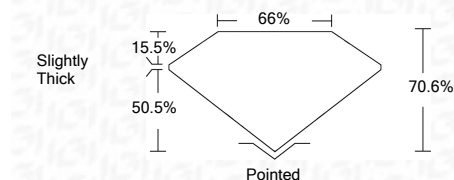
Measurements **8.66 X 6.59 X 4.65 MM**

**GRADING RESULTS**

Carat Weight **2.50 CARATS**

Color Grade **G**

Clarity Grade **VS 1**



**ADDITIONAL GRADING INFORMATION**

Polish **EXCELLENT**

Symmetry **EXCELLENT**

Fluorescence **NONE**

Inscription(s) **LABGROWN IGI LG526280351**

Comments: This Laboratory Grown Diamond was created by Chemical Vapor Deposition (CVD) growth process and may include post-growth treatment.  
Type IIa

May 5, 2022

IGI Report Number **LG526280351**

Description **LABORATORY GROWN DIAMOND**

Shape and Cutting Style **CUT CORNERED RECTANGULAR MODIFIED BRILLIANT**

Measurements **8.66 X 6.59 X 4.65 MM**

**GRADING RESULTS**

Carat Weight **2.50 CARATS**

Color Grade **G**

Clarity Grade **VS 1**

**ADDITIONAL GRADING INFORMATION**

Polish **EXCELLENT**

Symmetry **EXCELLENT**

Fluorescence **NONE**

Inscription(s) **LABGROWN IGI LG526280351**

Comments: This Laboratory Grown Diamond was created by Chemical Vapor Deposition (CVD) growth process and may include post-growth treatment.  
Type IIa



**IGI**

|                            |                                       |                       |             |   |      |       |     |                |         |           |           |      |                          |
|----------------------------|---------------------------------------|-----------------------|-------------|---|------|-------|-----|----------------|---------|-----------|-----------|------|--------------------------|
| IGI Report No. LG526280351 | CUT CORNERED RECT. MODIFIED BRILLIANT | 8.66 X 6.59 X 4.65 MM | 2.50 CARATS | G | VS 1 | 70.6% | 66% | Slightly Thick | Pointed | EXCELLENT | EXCELLENT | NONE | LABGROWN IGI LG526280351 |
| May 5, 2022                |                                       |                       |             |   |      |       |     |                |         |           |           |      |                          |

This Laboratory Grown Diamond was created by Chemical Vapor Deposition (CVD) growth process and may include post-growth treatment.  
Type IIa