



**ELECTRONIC COPY**

**LABORATORY GROWN DIAMOND REPORT**

April 29, 2022  
 IGI Report Number **LG526279617**  
 Description **LABORATORY GROWN  
DIAMOND**  
 Shape and Cutting Style **HEART BRILLIANT**  
 Measurements **7.42 X 8.26 X 4.68 MM**

**GRADING RESULTS**

Carat Weight **1.64 CARAT**  
 Color Grade **F**  
 Clarity Grade **VS 1**

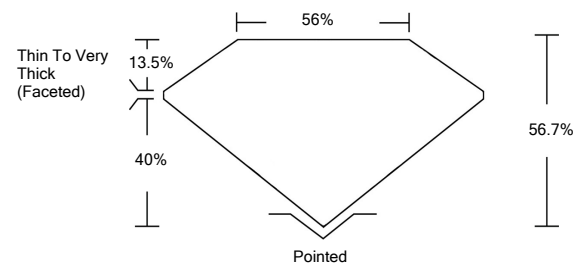
**ADDITIONAL GRADING INFORMATION**

Polish **EXCELLENT**  
 Symmetry **EXCELLENT**  
 Fluorescence **NONE**  
 Inscription(s) **LABGROWN IGI LG526279617**

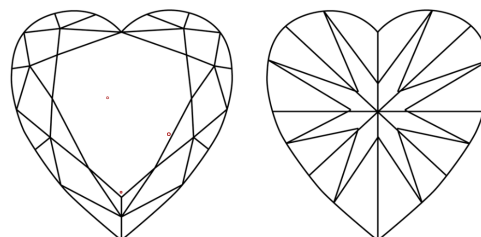
Comments: This Laboratory Grown Diamond was created by Chemical Vapor Deposition (CVD) growth process and may include post-growth treatment.  
 Type IIa

LG526279617

**PROPORTIONS**



**CLARITY CHARACTERISTICS**

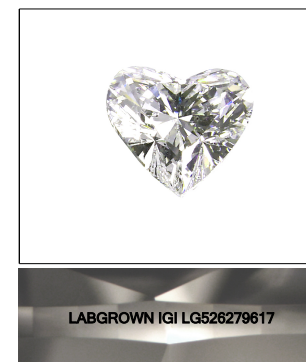


**KEY TO SYMBOLS**

Red symbols indicate internal characteristics.  
 Green symbols indicate external characteristics.

**GRADING SCALES**

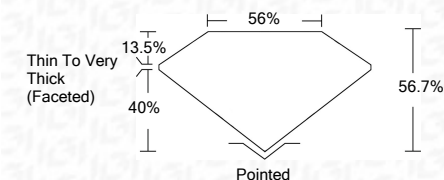
COLOR GRADING SCALE	CL	NC	FT	VL	LT	
	COLORLESS D-F	NEAR COLORLESS G-J	FAINT K-M	VERY LIGHT N-R	LIGHT S-Z	
CLARITY (10x) GRADING SCALE	FL	IF	VVS	VS	SI	I
	FLAWLESS INTERNALLY FLAWLESS	VERY VERY SLIGHTLY INCLUDED	VERY SLIGHTLY INCLUDED	SLIGHTLY INCLUDED		INCLUDED



**LASERSCRIBE<sup>SM</sup>**

Sample Image Used

April 29, 2022  
 IGI Report Number **LG526279617**  
 Description **LABORATORY GROWN  
DIAMOND**  
 Shape and Cutting Style **HEART BRILLIANT**  
 Measurements **7.42 X 8.26 X 4.68 MM**  
**GRADING RESULTS**  
 Carat Weight **1.64 CARAT**  
 Color Grade **F**  
 Clarity Grade **VS 1**



**ADDITIONAL GRADING INFORMATION**

Polish **EXCELLENT**  
 Symmetry **EXCELLENT**  
 Fluorescence **NONE**  
 Inscription(s) **LABGROWN IGI LG526279617**

Comments: This Laboratory Grown Diamond was created by Chemical Vapor Deposition (CVD) growth process and may include post-growth treatment.  
 Type IIa



**IGI**



April 29, 2022  
 IGI Report No. **LG526279617**  
**HEART BRILLIANT**  
**7.42 X 8.26 X 4.68 MM**  
 Carat Weight **1.64 CARAT**  
 Color Grade **F**  
 Clarity Grade **VS 1**  
 Depth **56.7%**  
 Table **56%**  
 Girdle **Thin To Very Thick (Faceted)**  
 Culet **Pointed**  
 Polish **EXCELLENT**  
 Symmetry **EXCELLENT**  
 Fluorescence **NONE**  
 Inscription(s) **LABGROWN IGI LG526279617**  
 Comments: This Laboratory Grown Diamond was created by Chemical Vapor Deposition (CVD) growth process and may include post-growth treatment.  
 Type IIa