

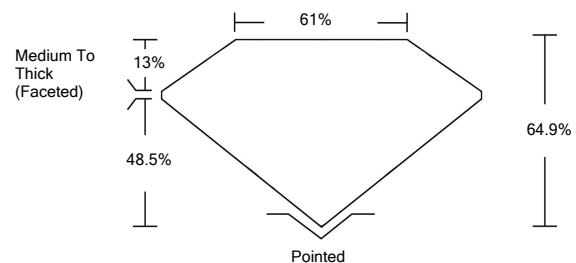


**ELECTRONIC COPY**

**LABORATORY GROWN DIAMOND REPORT**

LG526279541

**PROPORTIONS**



**GRADING SCALES**

|                             |                              |                             |                        |                   |           |   |
|-----------------------------|------------------------------|-----------------------------|------------------------|-------------------|-----------|---|
| COLOR GRADING SCALE         | CL                           | NC                          | FT                     | VLT               | LT        |   |
|                             | COLORLESS D-F                | NEAR COLORLESS G-J          | FAINT K-M              | VERY LIGHT N-R    | LIGHT S-Z |   |
| CLARITY (10x) GRADING SCALE | FL                           | IF                          | VVS                    | VS                | SI        | I |
|                             | FLAWLESS INTERNALLY FLAWLESS | VERY VERY SLIGHTLY INCLUDED | VERY SLIGHTLY INCLUDED | SLIGHTLY INCLUDED | INCLUDED  |   |

May 5, 2022

IGI Report Number

**LG526279541**

Description

**LABORATORY GROWN  
DIAMOND**

Shape and Cutting Style

**CUSHION BRILLIANT**

Measurements

**7.66 X 6.35 X 4.12 MM**

**GRADING RESULTS**

Carat Weight

**1.73 CARAT**

Color Grade

**F**

Clarity Grade

**VS 2**

May 5, 2022

IGI Report Number

**LG526279541**

Description

**LABORATORY GROWN  
DIAMOND**

Shape and Cutting Style

**CUSHION BRILLIANT**

Measurements

**7.66 X 6.35 X 4.12 MM**

**GRADING RESULTS**

Carat Weight

**1.73 CARAT**

Color Grade

**F**

Clarity Grade

**VS 2**

**ADDITIONAL GRADING INFORMATION**

Polish

**EXCELLENT**

Symmetry

**EXCELLENT**

Fluorescence

**NONE**

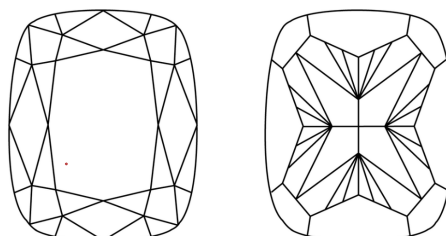
Inscription(s)

**LABGROWN IGI LG526279541**

Comments: This Laboratory Grown Diamond was created by Chemical Vapor Deposition (CVD) growth process and may include post-growth treatment.

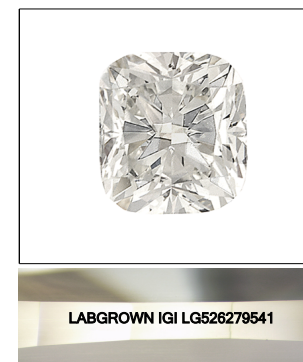
Type IIa

**CLARITY CHARACTERISTICS**



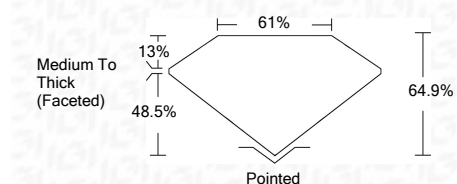
**KEY TO SYMBOLS**

Red symbols indicate internal characteristics.  
Green symbols indicate external characteristics.



**LASERSCRIBE<sup>SM</sup>**

Sample Image Used



**ADDITIONAL GRADING INFORMATION**

Polish

**EXCELLENT**

Symmetry

**EXCELLENT**

Fluorescence

**NONE**

Inscription(s)

**LABGROWN IGI LG526279541**

Comments: This Laboratory Grown Diamond was created by Chemical Vapor Deposition (CVD) growth process and may include post-growth treatment.  
Type IIa



**IGI**



|                            |            |   |      |       |     |                           |         |           |           |      |                          |
|----------------------------|------------|---|------|-------|-----|---------------------------|---------|-----------|-----------|------|--------------------------|
| IGI Report No. LG526279541 | 1.73 CARAT | F | VS 2 | 64.9% | 61% | Medium To Thick (Faceted) | Pointed | EXCELLENT | EXCELLENT | NONE | LABGROWN IGI LG526279541 |
| CUSHION BRILLIANT          |            |   |      |       |     |                           |         |           |           |      |                          |
| 7.66 X 6.35 X 4.12 MM      |            |   |      |       |     |                           |         |           |           |      |                          |
| Carat Weight               |            |   |      |       |     |                           |         |           |           |      |                          |
| Color Grade                |            |   |      |       |     |                           |         |           |           |      |                          |
| Clarity Grade              |            |   |      |       |     |                           |         |           |           |      |                          |
| Depth                      |            |   |      |       |     |                           |         |           |           |      |                          |
| Table                      |            |   |      |       |     |                           |         |           |           |      |                          |
| Girdle                     |            |   |      |       |     |                           |         |           |           |      |                          |
| Culet                      |            |   |      |       |     |                           |         |           |           |      |                          |
| Polish                     |            |   |      |       |     |                           |         |           |           |      |                          |
| Symmetry                   |            |   |      |       |     |                           |         |           |           |      |                          |
| Fluorescence               |            |   |      |       |     |                           |         |           |           |      |                          |
| Inscription(s)             |            |   |      |       |     |                           |         |           |           |      |                          |
| Comments:                  |            |   |      |       |     |                           |         |           |           |      |                          |

This Laboratory Grown Diamond was created by Chemical Vapor Deposition (CVD) growth process and may include post-growth treatment.  
Type IIa