

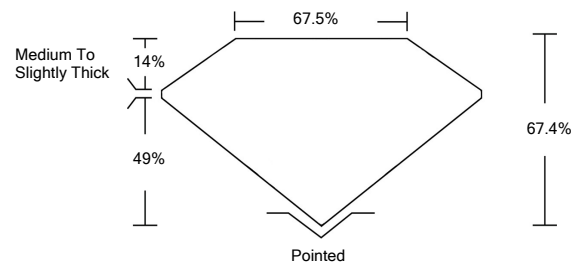


**ELECTRONIC COPY**

**LABORATORY GROWN DIAMOND REPORT**

LG526277634

**PROPORTIONS**



**GRADING SCALES**

|                             |                              |                             |                        |                   |           |          |
|-----------------------------|------------------------------|-----------------------------|------------------------|-------------------|-----------|----------|
| COLOR GRADING SCALE         | CL                           | NC                          | FT                     | VLT               | LT        |          |
|                             | COLORLESS D-F                | NEAR COLORLESS G-J          | FAINT K-M              | VERY LIGHT N-R    | LIGHT S-Z |          |
| CLARITY (10x) GRADING SCALE | FL                           | IF                          | VVS                    | VS                | SI        | I        |
|                             | FLAWLESS INTERNALLY FLAWLESS | VERY VERY SLIGHTLY INCLUDED | VERY SLIGHTLY INCLUDED | SLIGHTLY INCLUDED | INCLUDED  | INCLUDED |

May 2, 2022

IGI Report Number

**LG526277634**

Description

**LABORATORY GROWN  
DIAMOND**

Shape and Cutting Style

**CUT CORNERED  
RECTANGULAR MODIFIED  
BRILLIANT**

Measurements

**8.17 X 6.17 X 4.16 MM**

**GRADING RESULTS**

Carat Weight

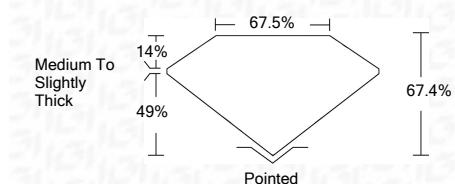
**2.01 CARATS**

Color Grade

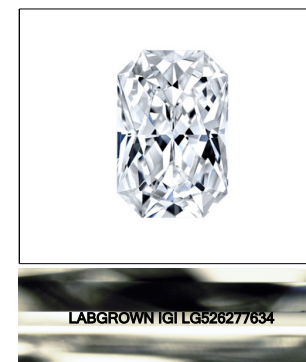
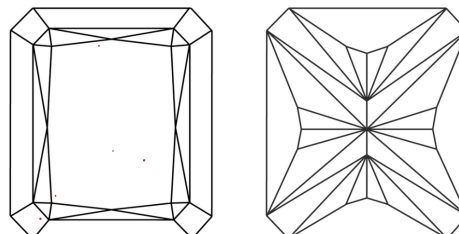
**H**

Clarity Grade

**VS 1**



**CLARITY CHARACTERISTICS**



**LASERSCRIBE<sup>SM</sup>**

Sample Image Used

**KEY TO SYMBOLS**

Red symbols indicate internal characteristics.  
Green symbols indicate external characteristics.

**ADDITIONAL GRADING INFORMATION**

Polish

**EXCELLENT**

Symmetry

**EXCELLENT**

Fluorescence

**NONE**

Inscription(s)

**LABGROWN IGI LG526277634**

Comments: This Laboratory Grown Diamond was created by Chemical Vapor Deposition (CVD) growth process and may include post-growth treatment.  
Type IIa

May 2, 2022

IGI Report Number

**LG526277634**

Description

**LABORATORY GROWN  
DIAMOND**

Shape and Cutting Style

**CUT CORNERED  
RECTANGULAR MODIFIED  
BRILLIANT**

Measurements

**8.17 X 6.17 X 4.16 MM**

**GRADING RESULTS**

Carat Weight

**2.01 CARATS**

Color Grade

**H**

Clarity Grade

**VS 1**

**ADDITIONAL GRADING INFORMATION**

Polish

**EXCELLENT**

Symmetry

**EXCELLENT**

Fluorescence

**NONE**

Inscription(s)

**LABGROWN IGI LG526277634**

Comments: This Laboratory Grown Diamond was created by Chemical Vapor Deposition (CVD) growth process and may include post-growth treatment.  
Type IIa

May 2, 2022  
IGI Report No. LG526277634  
**CUT CORNERED RECT. MODIFIED  
BRILLIANT**  
8.17 X 6.17 X 4.16 MM  
2.01 CARATS  
H  
VS 1  
67.5%  
49%  
14%  
Medium To Slightly Thick  
Pointed  
EXCELLENT  
EXCELLENT  
NONE  
LABGROWN IGI  
LG526277634  
Comments: This Laboratory Grown Diamond was created by Chemical Vapor Deposition (CVD) growth process and may include post-growth treatment.  
Type IIa