

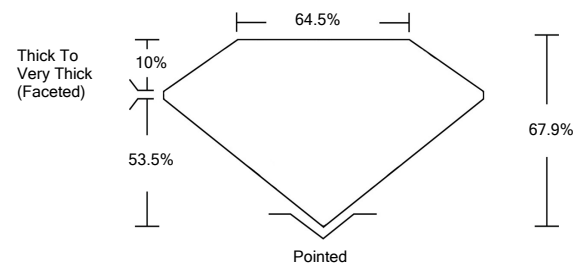


ELECTRONIC COPY

LABORATORY GROWN DIAMOND REPORT

LG526277540

PROPORTIONS



GRADING SCALES

COLOR GRADING SCALE	CL	NC	FT	VL	LT	
	COLORLESS D-F	NEAR COLORLESS G-J	FAINT K-M	VERY LIGHT N-R	LIGHT S-Z	
CLARITY (10x) GRADING SCALE	FL	IF	VVS	VS	SI	I
	FLAWLESS INTERNALLY FLAWLESS	VERY VERY SLIGHTLY INCLUDED	VERY SLIGHTLY INCLUDED	SLIGHTLY INCLUDED	INCLUDED	INCLUDED

April 28, 2022

IGI Report Number

LG526277540

Description

LABORATORY GROWN DIAMOND

Shape and Cutting Style

CUSHION BRILLIANT

Measurements

7.34 X 6.86 X 4.66 MM

GRADING RESULTS

Carat Weight

2.01 CARATS

Color Grade

F

Clarity Grade

VS 2

April 28, 2022

IGI Report Number

LG526277540

Description

LABORATORY GROWN DIAMOND

Shape and Cutting Style

CUSHION BRILLIANT

Measurements

7.34 X 6.86 X 4.66 MM

GRADING RESULTS

Carat Weight

2.01 CARATS

Color Grade

F

Clarity Grade

VS 2

ADDITIONAL GRADING INFORMATION

Polish

EXCELLENT

Symmetry

EXCELLENT

Fluorescence

NONE

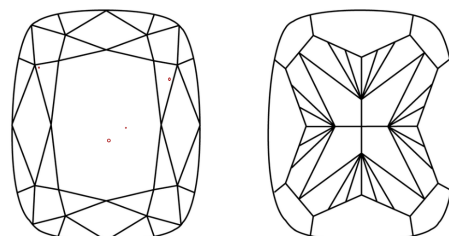
Inscription(s)

LABGROWN IGI LG526277540

Comments: This Laboratory Grown Diamond was created by Chemical Vapor Deposition (CVD) growth process and may include post-growth treatment.

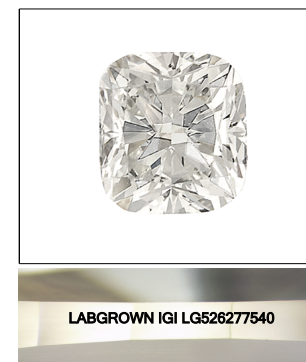
Type IIa

CLARITY CHARACTERISTICS



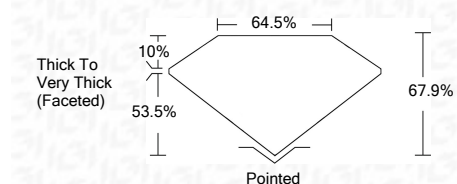
KEY TO SYMBOLS

Red symbols indicate internal characteristics.
Green symbols indicate external characteristics.



LASERSCRIBESM

Sample Image Used



ADDITIONAL GRADING INFORMATION

Polish

EXCELLENT

Symmetry

EXCELLENT

Fluorescence

NONE

Inscription(s)

LABGROWN IGI LG526277540

Comments: This Laboratory Grown Diamond was created by Chemical Vapor Deposition (CVD) growth process and may include post-growth treatment.

Type IIa



IGI

April 28, 2022
IGI Report No. LG526277540
CUSHION BRILLIANT
7.34 X 6.86 X 4.66 MM
Carat Weight
2.01 CARATS
Color Grade
F
Clarity Grade
VS 2
Depth
67.9%
Table
64.5%
Girdle
Thick To Very Thick (Faceted)
Culet
Pointed
Polish
EXCELLENT
Symmetry
EXCELLENT
Fluorescence
NONE
Inscription(s)
LABGROWN IGI LG526277540
Comments:

This Laboratory Grown Diamond was created by Chemical Vapor Deposition (CVD) growth process and may include post-growth treatment.
Type IIa