



**ELECTRONIC COPY**

## LABORATORY GROWN DIAMOND REPORT

|                         |   |
|-------------------------|---|
| April 30, 2022          |   |
| IGI Report Number       | LG526274854                                       |
| Description             | LABORATORY GROWN<br>DIAMOND                       |
| Shape and Cutting Style | CUT CORNERED<br>RECTANGULAR MODIFIED<br>BRILLIANT |
| Measurements            | 8.30 X 6.06 X 4.22 MM                             |

## GRADING RESULTS

|               |             |
|---------------|-------------|
| Carat Weight  | 2.02 CARATS |
| Color Grade   | F           |
| Clarity Grade | VS 1        |

### ADDITIONAL GRADING INFORMATION

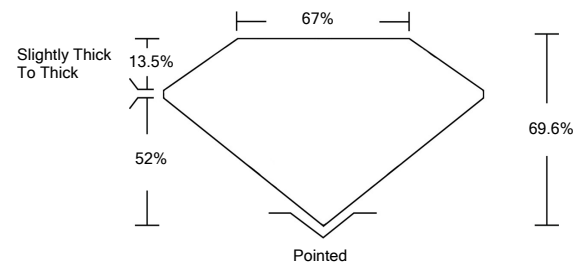
|              |           |
|--------------|-----------|
| Polish       | EXCELLENT |
| Symmetry     | EXCELLENT |
| Fluorescence | NONE      |

Inscription(s) **LABGROWN IGI LG526274854**

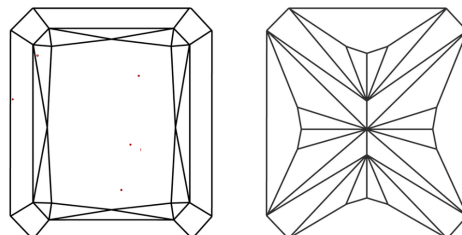
Comments: This Laboratory Grown Diamond was created by Chemical Vapor Deposition (CVD) growth process and may include post-growth treatment.  
Type IIa

LG526274854

## PROPORTIONS



## CLARITY CHARACTERISTICS

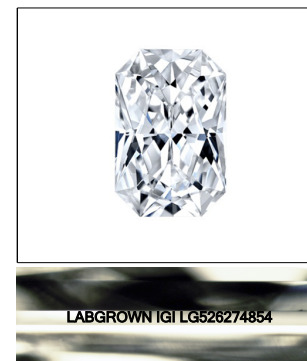


## KEY TO SYMBOLS

Red symbols indicate internal characteristics.  
Green symbols indicate external characteristics.

## GRADING SCALES

|                             |                              |    |                             |                        |                   |           |
|-----------------------------|------------------------------|----|-----------------------------|------------------------|-------------------|-----------|
| COLOR GRADING SCALE         | CL                           |    | NC                          | FT                     | VLT               | LT        |
|                             | COLORLESS D-F                |    | NEAR COLORLESS G-J          | FAINT K-M              | VERY LIGHT N-R    | LIGHT S-Z |
| CLARITY (10x) GRADING SCALE | FL                           | IF | VVS                         | VS                     | SI                | I         |
|                             | FLAWLESS INTERNALLY FLAWLESS |    | VERY VERY SLIGHTLY INCLUDED | VERY SLIGHTLY INCLUDED | SLIGHTLY INCLUDED | INCLUDED  |

LASERSCRIBE<sup>SM</sup>

Sample Image Used



© IGI 2020, International Gemological Institute

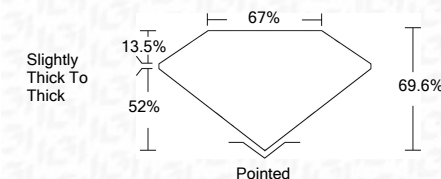
FD - 10 20

## LABORATORY GROWN DIAMOND REPORT

|                         |   |
|-------------------------|---|
| April 30, 2022          |   |
| IGI Report Number       | LG526274854                                       |
| Description             | LABORATORY GROWN<br>DIAMOND                       |
| Shape and Cutting Style | CUT CORNERED<br>RECTANGULAR MODIFIED<br>BRILLIANT |
| Measurements            | 8.30 X 6.06 X 4.22 MM                             |

### GRADING RESULTS

|               |             |
|---------------|-------------|
| Carat Weight  | 2.02 CARATS |
| Color Grade   | F           |
| Clarity Grade | VS 1        |



### ADDITIONAL GRADING INFORMATION

|                |                          |
|----------------|--------------------------|
| Polish         | EXCELLENT                |
| Symmetry       | EXCELLENT                |
| Fluorescence   | NONE                     |
| Inscription(s) | LABGROWN IGI LG526274854 |

Inscription(s) LABGROWN IGI LG526274854

Comments: This Laboratory Grown Diamond was created by Chemical Vapor Deposition (CVD) growth process and may include post-growth treatment.  
Type IIa

[illegible]

This Laboratory Grown Diamond was created by Chemical Vapor Deposition (CVD) growth process and may include post-growth treatment.