



ELECTRONIC COPY

LG526272302
Report verification at igi.org



February 13, 2025

IGI Report Number **LG526272302**

Description **LABORATORY GROWN DIAMOND**

Shape and Cutting Style **CUSHION BRILLIANT**

Measurements **8.62 X 7.12 X 4.76 MM**

GRADING RESULTS

Carat Weight **2.53 CARATS**

Color Grade **FANCY VIVID PINK**

Clarity Grade **VS 1**

February 13, 2025
IGI Report Number **LG526272302**
Description **LABORATORY GROWN DIAMOND**
Shape and Cutting Style **CUSHION BRILLIANT**
Measurements **8.62 X 7.12 X 4.76 MM**

GRADING RESULTS

Carat Weight **2.53 CARATS**

Color Grade **FANCY VIVID PINK**

Clarity Grade **VS 1**

ADDITIONAL GRADING INFORMATION

Polish **EXCELLENT**

Symmetry **EXCELLENT**

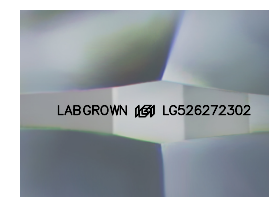
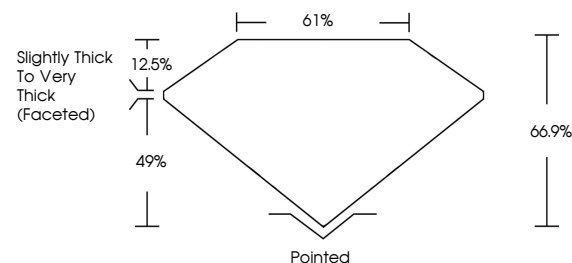
Fluorescence **SLIGHT**

Inscription(s) **LABGROWN (IGI) LG526272302**

Comments: This Laboratory Grown Diamond was created by Chemical Vapor Deposition (CVD) growth process.
Indications of post-growth treatment.

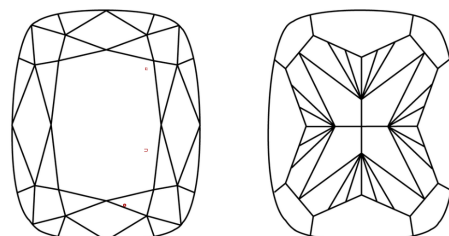
Secondary color: Orange

PROPORTIONS



Sample Image Used

CLARITY CHARACTERISTICS



KEY TO SYMBOLS

Red symbols indicate internal characteristics.
Green symbols indicate external characteristics.

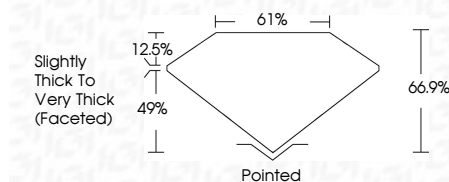
COLOR

D E F G H I J Faint Very Light Light

CLARITY

IF VS¹⁻² VS¹⁻² SI¹⁻² I¹⁻³

Internally Flawless Very Very Slightly Included Very Slightly Included Slightly Included Included



ADDITIONAL GRADING INFORMATION

Polish **EXCELLENT**

Symmetry **EXCELLENT**

Fluorescence **SLIGHT**

Inscription(s) **LABGROWN (IGI) LG526272302**

Comments: This Laboratory Grown Diamond was created by Chemical Vapor Deposition (CVD) growth process.
Indications of post-growth treatment.

Secondary color: Orange



IGI



February 13, 2025
IGI Report No LG526272302
CUSHION BRILLIANT
8.62 X 7.12 X 4.76 MM
2.53 CARATS
FANCY VIVID PINK
VS 1
66.9%
61%
Slightly Thick To Very Thick (Faceted)
Pointed
EXCELLENT
EXCELLENT
SLIGHT
LABGROWN (IGI) LG526272302
Comments: This Laboratory Grown Diamond was created by Chemical Vapor Deposition (CVD) growth process.
Indications of post-growth treatment.
Secondary color: Orange