



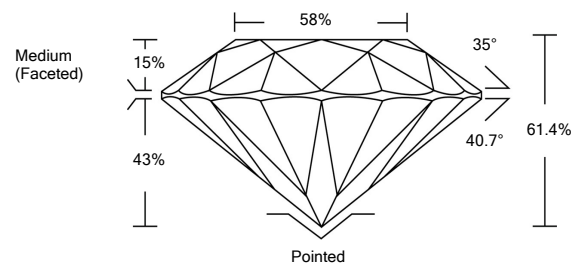
ELECTRONIC COPY

LG526271438

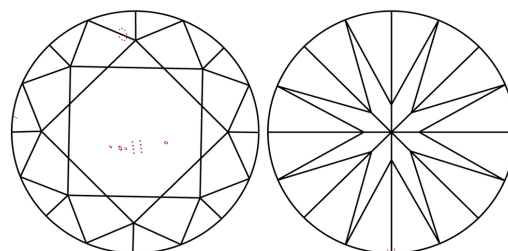
GRADING SCALES

COLOR GRADING SCALE	CL	NC	FT	VL	LT	
	COLORLESS D-F	NEAR COLORLESS G-J	FAINT K-M	VERY LIGHT N-R	LIGHT S-Z	
CLARITY (10x) GRADING SCALE	FL	IF	VVS	VS	SI	I
	FLAWLESS INTERNALLY FLAWLESS	VERY VERY SLIGHTLY INCLUDED	VERY SLIGHTLY INCLUDED	SLIGHTLY INCLUDED	INCLUDED	

PROPORTIONS

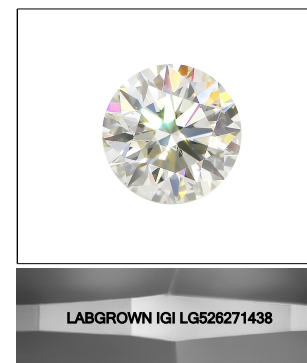
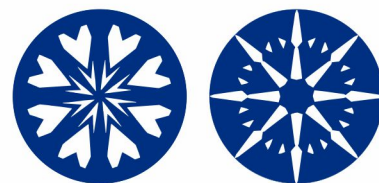


CLARITY CHARACTERISTICS



KEY TO SYMBOLS

Red symbols indicate internal characteristics. Green symbols indicate external characteristics.



LASERSCRIBESM Sample Image Used

April 26, 2022

IGI Report Number

LG526271438

Description

LABORATORY GROWN DIAMOND

Shape and Cutting Style

ROUND BRILLIANT

Measurements

10.73 - 10.79 X 6.61 MM

GRADING RESULTS

Carat Weight

4.71 CARATS

Color Grade

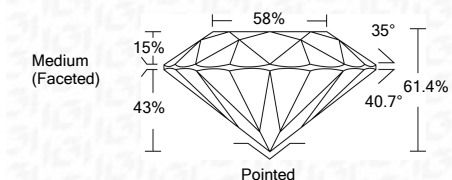
G

Clarity Grade

VS 2

Cut Grade

IDEAL



ADDITIONAL GRADING INFORMATION

Polish

EXCELLENT

Symmetry

EXCELLENT

Fluorescence

NONE

Inscription(s)

LABGROWN IGI LG526271438

Comments: HEARTS & ARROWS

This Laboratory Grown Diamond was created by Chemical Vapor Deposition (CVD) growth process and may include post-growth treatment. Type IIa



IGI

April 26, 2022	IGI Report No. LG526271438	4.71 CARATS	G
ROUND BRILLIANT	10.73 - 10.79 X 6.61 MM	VS 2	IDEAL
Carat Weight	10.73 - 10.79 X 6.61 MM	61.4%	58%
Color Grade	G	Medium (Faceted)	
Clarity Grade	VS 2	Pointed	EXCELLENT
Cut Grade	IDEAL	Symmetry	EXCELLENT
Depth	61.4%	Fluorescence	NONE
Table	58%	Inscription(s)	LABGROWN IGI LG526271438
Girdle	Medium (Faceted)	Comments: HEARTS & ARROWS	This Laboratory Grown Diamond was created by Chemical Vapor Deposition (CVD) growth process and may include post-growth treatment. Type IIa

