



ELECTRONIC COPY

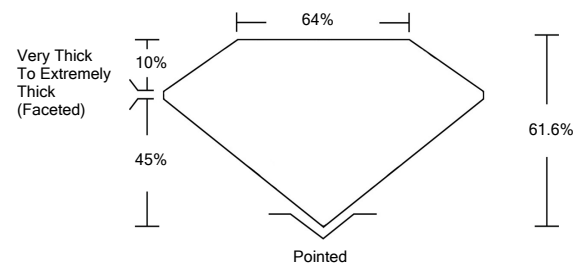
LABORATORY GROWN DIAMOND REPORT

LG526270966

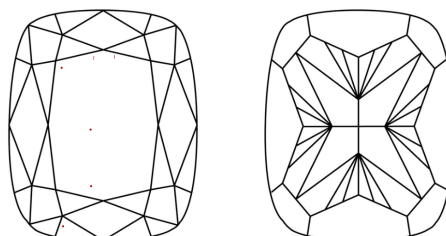
GRADING SCALES

COLOR GRADING SCALE	CL	NC	FT	VL	LT	
	COLORLESS D-F	NEAR COLORLESS G-J	FAINT K-M	VERY LIGHT N-R	LIGHT S-Z	
CLARITY (10x) GRADING SCALE	FL	IF	VVS	VS	SI	I
	FLAWLESS INTERNALLY FLAWLESS	VERY VERY SLIGHTLY INCLUDED	VERY SLIGHTLY INCLUDED	SLIGHTLY INCLUDED	INCLUDED	INCLUDED

PROPORTIONS

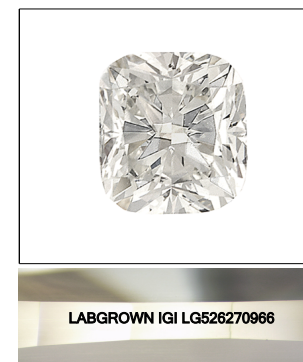


CLARITY CHARACTERISTICS



KEY TO SYMBOLS

Red symbols indicate internal characteristics.
Green symbols indicate external characteristics.



LASERSCRIBESM
Sample Image Used

April 27, 2022

IGI Report Number

LG526270966

Description

**LABORATORY GROWN
DIAMOND**

Shape and Cutting Style

CUSHION BRILLIANT

Measurements

8.22 X 7.50 X 4.62 MM

GRADING RESULTS

Carat Weight

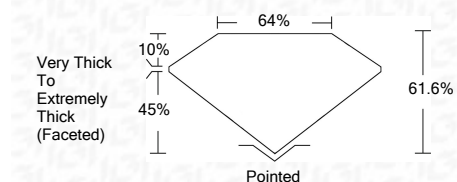
2.60 CARATS

Color Grade

F

Clarity Grade

VS 1



ADDITIONAL GRADING INFORMATION

Polish

EXCELLENT

Symmetry

EXCELLENT

Fluorescence

NONE

Inscription(s)

LABGROWN IGI LG526270966

Comments: This Laboratory Grown Diamond was created by Chemical Vapor Deposition (CVD) growth process and may include post-growth treatment.
Type IIa

April 27, 2022

IGI Report Number

LG526270966

Description

**LABORATORY GROWN
DIAMOND**

Shape and Cutting Style

CUSHION BRILLIANT

Measurements

8.22 X 7.50 X 4.62 MM

GRADING RESULTS

Carat Weight

2.60 CARATS

Color Grade

F

Clarity Grade

VS 1

ADDITIONAL GRADING INFORMATION

Polish

EXCELLENT

Symmetry

EXCELLENT

Fluorescence

NONE

Inscription(s)

LABGROWN IGI LG526270966

Comments: This Laboratory Grown Diamond was created by Chemical Vapor Deposition (CVD) growth process and may include post-growth treatment.
Type IIa



IGI

IGI Report No. LG526270966	2.60 CARATS	F	VS 1	61.6%	64%	Very Thick To Extremely Thick (Faceted)	Pointed
CUSHION BRILLIANT							EXCELLENT
8.22 X 7.50 X 4.62 MM							EXCELLENT
Carat Weight							NONE
Color Grade							LABGROWN IGI LG526270966
Clarity Grade							
Depth							
Table							
Girdle							
Culet							
Polish							
Symmetry							
Fluorescence							
Inscription(s)							
Comments:							

This Laboratory Grown Diamond was created by Chemical Vapor Deposition (CVD) growth process and may include post-growth treatment.
Type IIa