



ELECTRONIC COPY

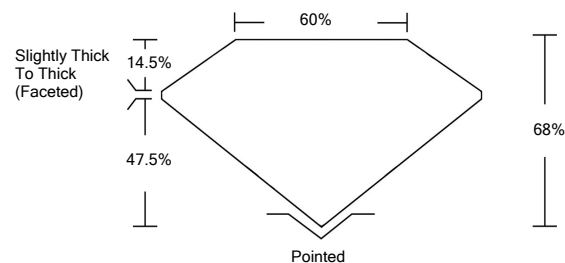
LG526268689

LABORATORY GROWN DIAMOND REPORT

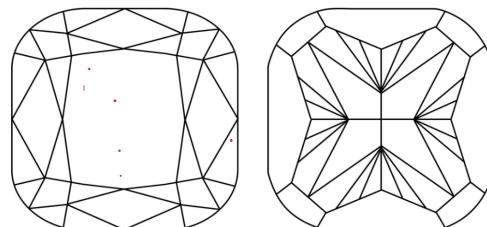
GRADING SCALES

COLOR GRADING SCALE	CL	NC	FT	VL	LT	
	COLORLESS D-F	NEAR COLORLESS G-J	FAINT K-M	VERY LIGHT N-R	LIGHT S-Z	
CLARITY (10x) GRADING SCALE	FL	IF	VVS	VS	SI	I
	FLAWLESS INTERNALLY FLAWLESS	VERY VERY SLIGHTLY INCLUDED	VERY SLIGHTLY INCLUDED	SLIGHTLY INCLUDED	INCLUDED	

PROPORTIONS

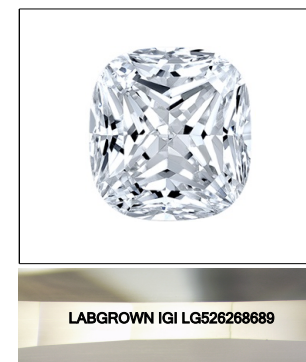


CLARITY CHARACTERISTICS



KEY TO SYMBOLS

Red symbols indicate internal characteristics.
Green symbols indicate external characteristics.



LASERSCRIBESM
Sample Image Used

April 23, 2022

IGI Report Number

LG526268689

Description

**LABORATORY GROWN
DIAMOND**

Shape and Cutting Style

**SQUARE CUSHION
BRILLIANT**

Measurements

8.18 X 7.79 X 5.30 MM

GRADING RESULTS

Carat Weight

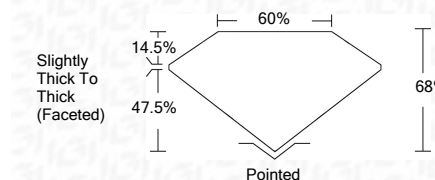
3.03 CARATS

Color Grade

F

Clarity Grade

VS 1



ADDITIONAL GRADING INFORMATION

Polish

EXCELLENT

Symmetry

EXCELLENT

Fluorescence

NONE

Inscription(s)

LABGROWN IGI LG526268689

Comments: This Laboratory Grown Diamond was created by Chemical Vapor Deposition (CVD) growth process and may include post-growth treatment.
Type IIa



IGI

IGI Report No. LG526268689	3.03 CARATS	F
SQUARE CUSHION BRILLIANT	VS 1	68%
8.18 X 7.79 X 5.30 MM	60%	60%
Carat Weight	Slightly Thick To Thick (Faceted)	Pointed
Color Grade		EXCELLENT
Clarity Grade		EXCELLENT
Depth		NONE
Table		LABGROWN IGI LG526268689
Girdle		Inscription(s)
Culet		Comments:
Polish		This Laboratory Grown Diamond was created by Chemical Vapor Deposition (CVD) growth process and may include post-growth treatment. Type IIa
Symmetry		
Fluorescence		
Inscription(s)		
Comments:		