



ELECTRONIC COPY

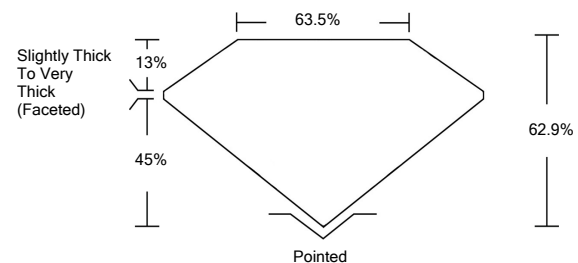
LG526268216

LABORATORY GROWN DIAMOND REPORT

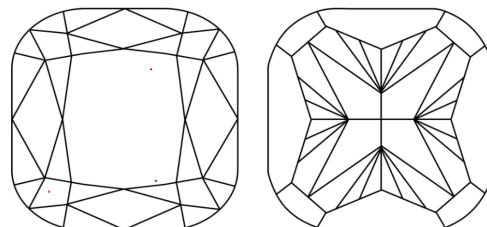
GRADING SCALES

COLOR GRADING SCALE	CL	NC	FT	VL	LT	
	COLORLESS D-F	NEAR COLORLESS G-J	FAINT K-M	VERY LIGHT N-R	LIGHT S-Z	
CLARITY (10x) GRADING SCALE	FL	IF	VVS	VS	SI	I
	FLAWLESS INTERNALLY FLAWLESS	VERY VERY SLIGHTLY INCLUDED	VERY SLIGHTLY INCLUDED	SLIGHTLY INCLUDED	INCLUDED	

PROPORTIONS

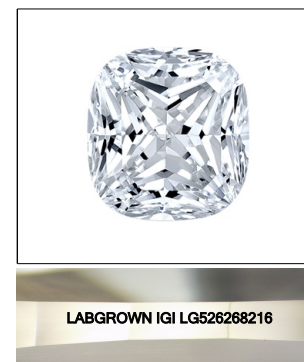


CLARITY CHARACTERISTICS



KEY TO SYMBOLS

Red symbols indicate internal characteristics.
Green symbols indicate external characteristics.



LABGROWN IGI LG526268216

LASERSCRIBESM

Sample Image Used

April 23, 2022

IGI Report Number

LG526268216

Description

**LABORATORY GROWN
DIAMOND**

Shape and Cutting Style

**SQUARE CUSHION
BRILLIANT**

Measurements

8.86 X 8.46 X 5.32 MM

GRADING RESULTS

Carat Weight

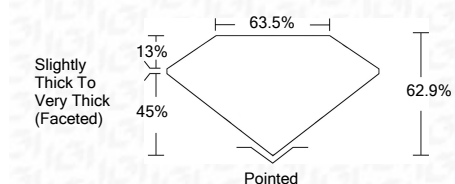
3.51 CARATS

Color Grade

G

Clarity Grade

VVS 2



ADDITIONAL GRADING INFORMATION

Polish

EXCELLENT

Symmetry

EXCELLENT

Fluorescence

NONE

Inscription(s)

LABGROWN IGI LG526268216

Comments: This Laboratory Grown Diamond was created by Chemical Vapor Deposition (CVD) growth process and may include post-growth treatment.
Type IIa

April 23, 2022

IGI Report Number

LG526268216

Description

**LABORATORY GROWN
DIAMOND**

Shape and Cutting Style

SQUARE CUSHION BRILLIANT

Measurements

8.86 X 8.46 X 5.32 MM

GRADING RESULTS

Carat Weight

3.51 CARATS

Color Grade

G

Clarity Grade

VVS 2

ADDITIONAL GRADING INFORMATION

Polish

EXCELLENT

Symmetry

EXCELLENT

Fluorescence

NONE

Inscription(s)

LABGROWN IGI LG526268216

Comments: This Laboratory Grown Diamond was created by Chemical Vapor Deposition (CVD) growth process and may include post-growth treatment.
Type IIa

April 23, 2022
IGI Report No. LG526268216
SQUARE CUSHION BRILLIANT
8.86 X 8.46 X 5.32 MM
Carat Weight 3.51 CARATS
Color Grade G
Clarity Grade VVS 2
Depth 62.9%
Table 63.5%
Girdle Slightly Thick To Very Thick (Faceted)
Culet Pointed
Polish EXCELLENT
Symmetry EXCELLENT
Fluorescence NONE
Inscription(s) LABGROWN IGI LG526268216
Comments: This Laboratory Grown Diamond was created by Chemical Vapor Deposition (CVD) growth process and may include post-growth treatment.
Type IIa