



**ELECTRONIC COPY**

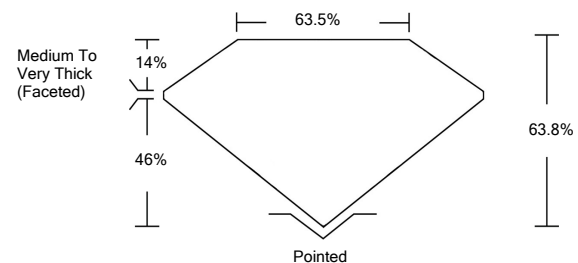
**LABORATORY GROWN DIAMOND REPORT**

|                                       |                                     |
|---------------------------------------|-------------------------------------|
| April 21, 2022                        |                                     |
| IGI Report Number                     | <b>LG526268206</b>                  |
| Description                           | <b>LABORATORY GROWN<br/>DIAMOND</b> |
| Shape and Cutting Style               | <b>SQUARE CUSHION BRILLIANT</b>     |
| Measurements                          | <b>8.55 X 8.15 X 5.20 MM</b>        |
| <b>GRADING RESULTS</b>                |                                     |
| Carat Weight                          | <b>3.28 CARATS</b>                  |
| Color Grade                           | <b>G</b>                            |
| Clarity Grade                         | <b>VS 2</b>                         |
| <b>ADDITIONAL GRADING INFORMATION</b> |                                     |
| Polish                                | <b>EXCELLENT</b>                    |
| Symmetry                              | <b>EXCELLENT</b>                    |
| Fluorescence                          | <b>NONE</b>                         |
| Inscription(s)                        | <b>LABGROWN IGI LG526268206</b>     |

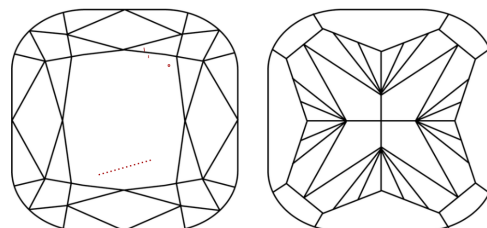
Comments: This Laboratory Grown Diamond was created by Chemical Vapor Deposition (CVD) growth process and may include post-growth treatment.  
Type IIa

LG526268206

**PROPORTIONS**



**CLARITY CHARACTERISTICS**

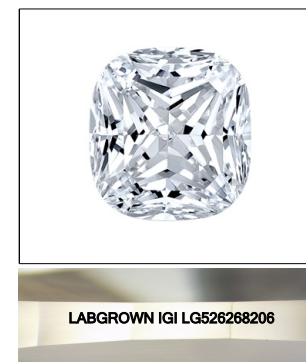


**KEY TO SYMBOLS**

Red symbols indicate internal characteristics.  
Green symbols indicate external characteristics.

**GRADING SCALES**

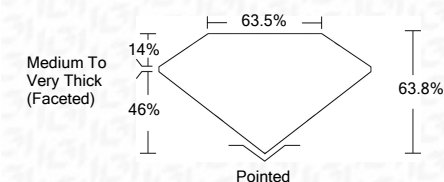
|                             |                              |                             |                        |                   |           |   |
|-----------------------------|------------------------------|-----------------------------|------------------------|-------------------|-----------|---|
| COLOR GRADING SCALE         | CL                           | NC                          | FT                     | VLT               | LT        |   |
|                             | COLORLESS D-F                | NEAR COLORLESS G-J          | FAINT K-M              | VERY LIGHT N-R    | LIGHT S-Z |   |
| CLARITY (10x) GRADING SCALE | FL                           | IF                          | VVS                    | VS                | SI        | I |
|                             | FLAWLESS INTERNALLY FLAWLESS | VERY VERY SLIGHTLY INCLUDED | VERY SLIGHTLY INCLUDED | SLIGHTLY INCLUDED | INCLUDED  |   |



**LASERSCRIBE<sup>SM</sup>**

Sample Image Used

|                         |                                     |
|-------------------------|-------------------------------------|
| April 21, 2022          |                                     |
| IGI Report Number       | <b>LG526268206</b>                  |
| Description             | <b>LABORATORY GROWN<br/>DIAMOND</b> |
| Shape and Cutting Style | <b>SQUARE CUSHION<br/>BRILLIANT</b> |
| Measurements            | <b>8.55 X 8.15 X 5.20 MM</b>        |
| <b>GRADING RESULTS</b>  |                                     |
| Carat Weight            | <b>3.28 CARATS</b>                  |
| Color Grade             | <b>G</b>                            |
| Clarity Grade           | <b>VS 2</b>                         |



|                                       |                                 |
|---------------------------------------|---------------------------------|
| <b>ADDITIONAL GRADING INFORMATION</b> |                                 |
| Polish                                | <b>EXCELLENT</b>                |
| Symmetry                              | <b>EXCELLENT</b>                |
| Fluorescence                          | <b>NONE</b>                     |
| Inscription(s)                        | <b>LABGROWN IGI LG526268206</b> |

Comments: This Laboratory Grown Diamond was created by Chemical Vapor Deposition (CVD) growth process and may include post-growth treatment.  
Type IIa



**IGI**

|                                 |                                       |
|---------------------------------|---------------------------------------|
| April 21, 2022                  |                                       |
| IGI Report No. LG526268206      |                                       |
| <b>SQUARE CUSHION BRILLIANT</b> |                                       |
| <b>8.55 X 8.15 X 5.20 MM</b>    |                                       |
| Carat Weight                    | <b>3.28 CARATS</b>                    |
| Color Grade                     | <b>G</b>                              |
| Clarity Grade                   | <b>VS 2</b>                           |
| Depth                           | <b>63.8%</b>                          |
| Table                           | <b>14%</b>                            |
| Girdle                          | <b>Medium To Very Thick (Faceted)</b> |
| Culet                           | <b>Pointed</b>                        |
| Polish                          | <b>EXCELLENT</b>                      |
| Symmetry                        | <b>EXCELLENT</b>                      |
| Fluorescence                    | <b>NONE</b>                           |
| Inscription(s)                  | <b>LABGROWN IGI LG526268206</b>       |
| Comments:                       |                                       |

This Laboratory Grown Diamond was created by Chemical Vapor Deposition (CVD) growth process and may include post-growth treatment.  
Type IIa