



ELECTRONIC COPY

LABORATORY GROWN DIAMOND REPORT

April 21, 2022
 IGI Report Number **LG523292058**
 Description **LABORATORY GROWN
DIAMOND**
 Shape and Cutting Style **CUT CORNERED
RECTANGULAR MODIFIED
BRILLIANT**
 Measurements **9.31 X 6.64 X 4.64 MM**

GRADING RESULTS

Carat Weight **2.50 CARATS**
 Color Grade **F**
 Clarity Grade **VVS 2**

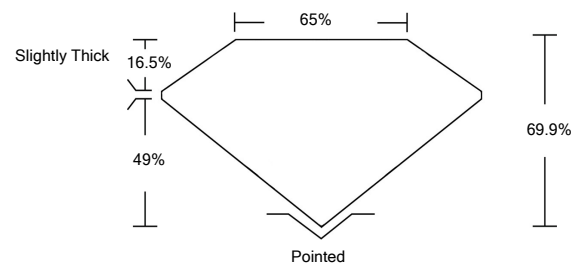
ADDITIONAL GRADING INFORMATION

Polish **EXCELLENT**
 Symmetry **EXCELLENT**
 Fluorescence **NONE**
 Inscription(s) **LABGROWN IGI LG523292058**

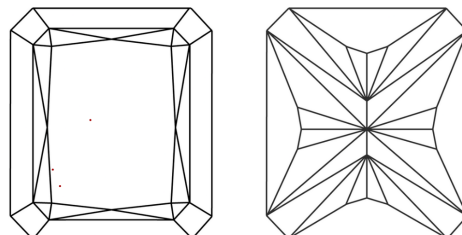
Comments: This Laboratory Grown Diamond was created by Chemical Vapor Deposition (CVD) growth process and may include post-growth treatment.
 Type IIa

LG523292058

PROPORTIONS



CLARITY CHARACTERISTICS

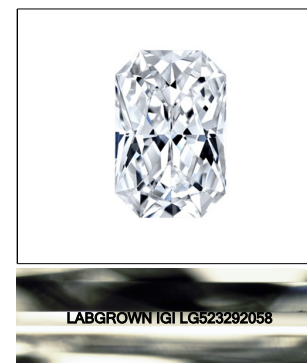


KEY TO SYMBOLS

Red symbols indicate internal characteristics.
 Green symbols indicate external characteristics.

GRADING SCALES

| COLOR GRADING SCALE | CL | NC | FT | VL | LT | |
|-----------------------------|------------------------------|-----------------------------|------------------------|-------------------|-----------|----------|
| | COLORLESS D-F | NEAR COLORLESS G-J | FAINT K-M | VERY LIGHT N-R | LIGHT S-Z | |
| CLARITY (10x) GRADING SCALE | FL | IF | VVS | VS | SI | I |
| | FLAWLESS INTERNALLY FLAWLESS | VERY VERY SLIGHTLY INCLUDED | VERY SLIGHTLY INCLUDED | SLIGHTLY INCLUDED | | INCLUDED |



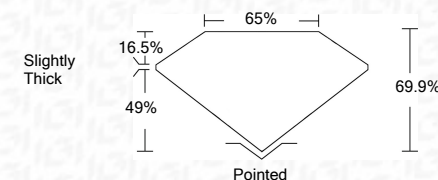
LASERSCRIBESM

Sample Image Used

April 21, 2022
 IGI Report Number **LG523292058**
 Description **LABORATORY GROWN
DIAMOND**
 Shape and Cutting Style **CUT CORNERED
RECTANGULAR MODIFIED
BRILLIANT**
 Measurements **9.31 X 6.64 X 4.64 MM**

GRADING RESULTS

Carat Weight **2.50 CARATS**
 Color Grade **F**
 Clarity Grade **VVS 2**



ADDITIONAL GRADING INFORMATION

Polish **EXCELLENT**
 Symmetry **EXCELLENT**
 Fluorescence **NONE**
 Inscription(s) **LABGROWN IGI LG523292058**

Comments: This Laboratory Grown Diamond was created by Chemical Vapor Deposition (CVD) growth process and may include post-growth treatment.
 Type IIa



IGI

April 21, 2022
 IGI Report No. LG523292058
**CUT CORNERED RECT. MODIFIED
BRILLIANT**
 Dimensions: 9.31 X 6.64 X 4.64 MM
 Carat Weight: 2.50 CARATS
 Color Grade: F
 Clarity Grade: VVS 2
 Depth: 69.9%
 Table: 65%
 Girdle: Slightly Thick
 Culet: Pointed
 Polish: EXCELLENT
 Symmetry: EXCELLENT
 Fluorescence: NONE
 Inscription(s): LABGROWN IGI LG523292058
 Comments: This Laboratory Grown Diamond was created by Chemical Vapor Deposition (CVD) growth process and may include post-growth treatment. Type IIa

