



ELECTRONIC COPY

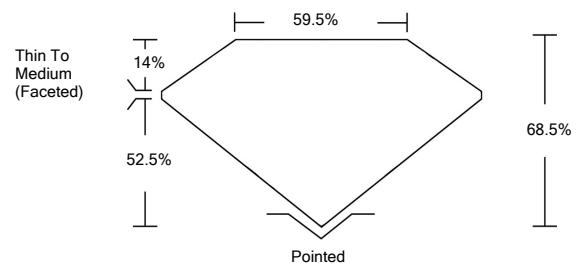
LABORATORY GROWN DIAMOND REPORT

April 12, 2022	
IGI Report Number	LG523289247
Description	LABORATORY GROWN DIAMOND
Shape and Cutting Style	CUSHION BRILLIANT
Measurements	7.19 X 6.39 X 4.38 MM
GRADING RESULTS	
Carat Weight	1.50 CARAT
Color Grade	FANCY INTENSE BLUE
Clarity Grade	VS 2
ADDITIONAL GRADING INFORMATION	
Polish	EXCELLENT
Symmetry	EXCELLENT
Fluorescence	NONE
Inscription(s)	LABGROWN IGI LG523289247

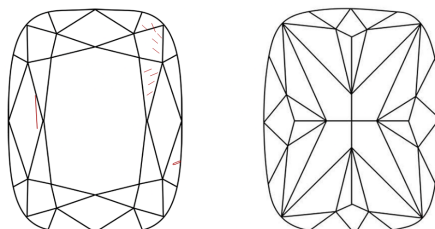
Comments: This Laboratory Grown Diamond was created by Chemical Vapor Deposition (CVD) growth process. Indications of post-growth treatment.

LG523289247

PROPORTIONS



CLARITY CHARACTERISTICS



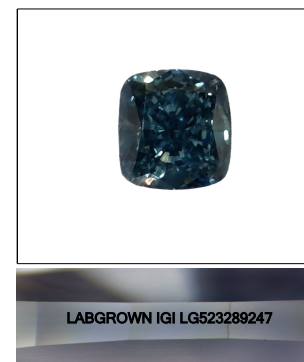
KEY TO SYMBOLS

Red symbols indicate internal characteristics.
Green symbols indicate external characteristics.

**LABORATORY GROWN
DIAMOND REPORT**

GRADING SCALES

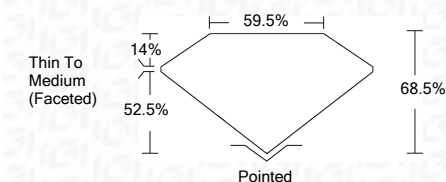
COLOR GRADING SCALE	CL	NC	FT	VL	LT	
	COLORLESS D-F	NEAR COLORLESS G-J	FAINT K-M	VERY LIGHT N-R	LIGHT S-Z	
CLARITY (10x) GRADING SCALE	FL	IF	VVS	VS	SI	I
	FLAWLESS INTERNALLY FLAWLESS	VERY VERY SLIGHTLY INCLUDED	VERY SLIGHTLY INCLUDED	SLIGHTLY INCLUDED	INCLUDED	



LASERSCRIBESM
Sample Image Used

LABORATORY GROWN DIAMOND REPORT

April 12, 2022	
IGI Report Number	LG523289247
Description	LABORATORY GROWN DIAMOND
Shape and Cutting Style	CUSHION BRILLIANT
Measurements	7.19 X 6.39 X 4.38 MM
GRADING RESULTS	
Carat Weight	1.50 CARAT
Color Grade	FANCY INTENSE BLUE
Clarity Grade	VS 2



ADDITIONAL GRADING INFORMATION	
Polish	EXCELLENT
Symmetry	EXCELLENT
Fluorescence	NONE
Inscription(s)	LABGROWN IGI LG523289247

Comments: This Laboratory Grown Diamond was created by Chemical Vapor Deposition (CVD) growth process. Indications of post-growth treatment.



April 12, 2022	
IGI Report No. LG523289247	
CUSHION BRILLIANT	
7.19 X 6.39 X 4.38 MM	
Carat Weight	1.50 CARAT
Color Grade	FANCY INTENSE BLUE
Clarity Grade	VS 2
Depth	68.5%
Table	52.5%
Grille	Thin To Medium (Faceted)
Culet	Pointed
Polish	EXCELLENT
Symmetry	EXCELLENT
Fluorescence	NONE
Inscription(s)	LABGROWN IGI LG523289247
Comments:	

This Laboratory Grown Diamond was created by Chemical Vapor Deposition (CVD) growth process. Indications of post-growth treatment.