



ELECTRONIC COPY

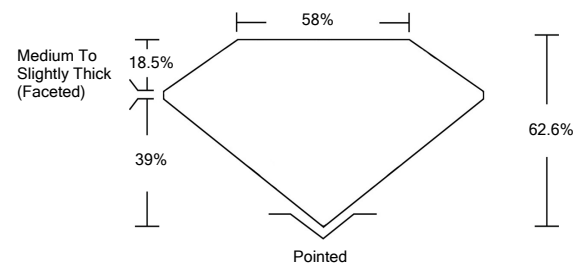
LABORATORY GROWN DIAMOND REPORT

LG523274689

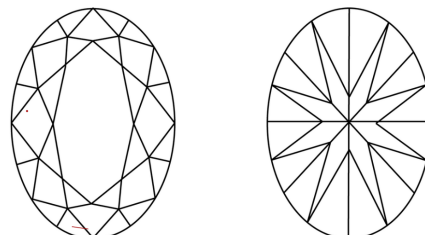
GRADING SCALES

COLOR GRADING SCALE	CL	NC	FT	VL	LT	
	COLORLESS D-F	NEAR COLORLESS G-J	FAINT K-M	VERY LIGHT N-R	LIGHT S-Z	
CLARITY (10x) GRADING SCALE	FL	IF	VVS	VS	SI	I
	FLAWLESS INTERNALLY FLAWLESS	VERY VERY SLIGHTLY INCLUDED	VERY SLIGHTLY INCLUDED	SLIGHTLY INCLUDED	INCLUDED	

PROPORTIONS

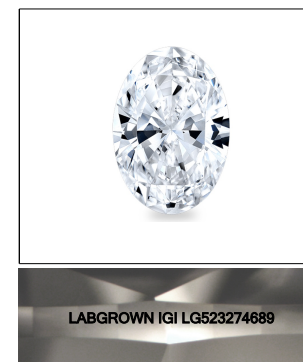


CLARITY CHARACTERISTICS



KEY TO SYMBOLS

Red symbols indicate internal characteristics.
Green symbols indicate external characteristics.



April 14, 2022

IGI Report Number **LG523274689**

Description **LABORATORY GROWN DIAMOND**

Shape and Cutting Style **OVAL BRILLIANT**

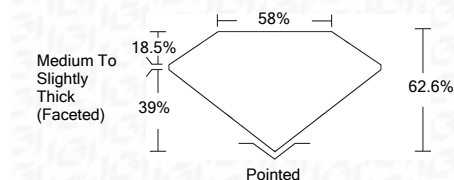
Measurements **10.87 X 7.45 X 4.66 MM**

GRADING RESULTS

Carat Weight **2.56 CARATS**

Color Grade **H**

Clarity Grade **VS 2**



ADDITIONAL GRADING INFORMATION

Polish **EXCELLENT**

Symmetry **EXCELLENT**

Fluorescence **NONE**

Inscription(s) **LABGROWN IGI LG523274689**

Comments: This Laboratory Grown Diamond was created by Chemical Vapor Deposition (CVD) growth process and may include post-growth treatment.
Type IIa

April 14, 2022

IGI Report Number **LG523274689**

Description **LABORATORY GROWN DIAMOND**

Shape and Cutting Style **OVAL BRILLIANT**

Measurements **10.87 X 7.45 X 4.66 MM**

GRADING RESULTS

Carat Weight **2.56 CARATS**

Color Grade **H**

Clarity Grade **VS 2**

ADDITIONAL GRADING INFORMATION

Polish **EXCELLENT**

Symmetry **EXCELLENT**

Fluorescence **NONE**

Inscription(s) **LABGROWN IGI LG523274689**

Comments: This Laboratory Grown Diamond was created by Chemical Vapor Deposition (CVD) growth process and may include post-growth treatment.
Type IIa



IGI Report No. LG523274689	2.56 CARATS	H
OVAL BRILLIANT	VS 2	62.6%
10.87 X 7.45 X 4.66 MM	39%	Medium To Slightly Thick (Faceted)
Carat Weight	Pointed	EXCELLENT
Color Grade	EXCELLENT	EXCELLENT
Clarity Grade	NONE	LABGROWN IGI LG523274689
Depth	None	
Table		
Girdle		
Culet		
Polish		
Symmetry		
Fluorescence		
Inscription(s)		
Comments:		

This Laboratory Grown Diamond was created by Chemical Vapor Deposition (CVD) growth process and may include post-growth treatment.
Type IIa