

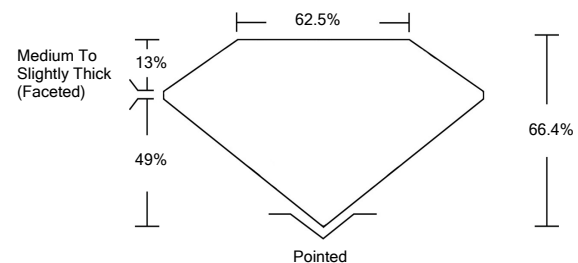


ELECTRONIC COPY

LABORATORY GROWN DIAMOND REPORT

LG523272649

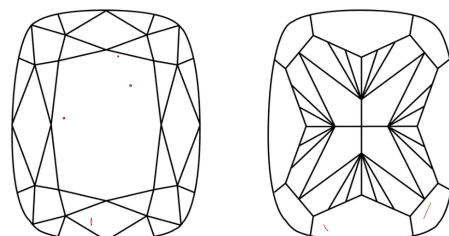
PROPORTIONS



GRADING SCALES

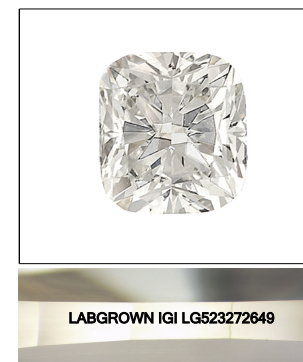
COLOR GRADING SCALE	CL	NC	FT	VL	LT	
	COLORLESS D-F	NEAR COLORLESS G-J	FAINT K-M	VERY LIGHT N-R	LIGHT S-Z	
CLARITY (10x) GRADING SCALE	FL	IF	VVS	VS	SI	I
	FLAWLESS INTERNALLY FLAWLESS	VERY VERY SLIGHTLY INCLUDED	VERY SLIGHTLY INCLUDED	SLIGHTLY INCLUDED	INCLUDED	

CLARITY CHARACTERISTICS



KEY TO SYMBOLS

Red symbols indicate internal characteristics.
Green symbols indicate external characteristics.



LASERSCRIBESM
Sample Image Used

April 7, 2022

IGI Report Number **LG523272649**

Description **LABORATORY GROWN DIAMOND**

Shape and Cutting Style **CUSHION BRILLIANT**

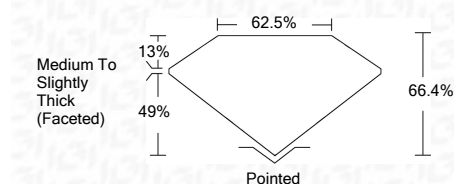
Measurements **9.50 X 7.94 X 5.27 MM**

GRADING RESULTS

Carat Weight **3.50 CARATS**

Color Grade **H**

Clarity Grade **VS 1**



ADDITIONAL GRADING INFORMATION

Polish **EXCELLENT**

Symmetry **EXCELLENT**

Fluorescence **NONE**

Inscription(s) **LABGROWN IGI LG523272649**

Comments: This Laboratory Grown Diamond was created by Chemical Vapor Deposition (CVD) growth process and may include post-growth treatment.
Type IIa

April 7, 2022

IGI Report Number **LG523272649**

Description **LABORATORY GROWN DIAMOND**

Shape and Cutting Style **CUSHION BRILLIANT**

Measurements **9.50 X 7.94 X 5.27 MM**

GRADING RESULTS

Carat Weight **3.50 CARATS**

Color Grade **H**

Clarity Grade **VS 1**

ADDITIONAL GRADING INFORMATION

Polish **EXCELLENT**

Symmetry **EXCELLENT**

Fluorescence **NONE**

Inscription(s) **LABGROWN IGI LG523272649**

Comments: This Laboratory Grown Diamond was created by Chemical Vapor Deposition (CVD) growth process and may include post-growth treatment.
Type IIa



April 7, 2022	IGI Report No. LG523272649	3.50 CARATS	H
CUSHION BRILLIANT	9.50 X 7.94 X 5.27 MM	66.4%	VS 1
Carat Weight	Color Grade	Depth	Table
	Clarity Grade	62.5%	62.5%
	Polish	Medium To Slightly Thick (Faceted)	Pointed
	Symmetry	EXCELLENT	EXCELLENT
	Fluorescence	NONE	NONE
	Inscription(s)	LABGROWN IGI LG523272649	
	Comments:	This Laboratory Grown Diamond was created by Chemical Vapor Deposition (CVD) growth process and may include post-growth treatment. Type IIa	

