

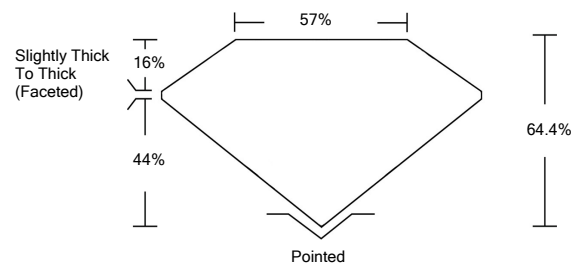


ELECTRONIC COPY

LABORATORY GROWN DIAMOND REPORT

LG523272647

PROPORTIONS



GRADING SCALES

COLOR GRADING SCALE	CL	NC	FT	VL	LT	
	COLORLESS D-F	NEAR COLORLESS G-J	FAINT K-M	VERY LIGHT N-R	LIGHT S-Z	
CLARITY (10x) GRADING SCALE	FL	IF	VVS	VS	SI	I
	FLAWLESS INTERNALLY FLAWLESS	VERY VERY SLIGHTLY INCLUDED	VERY SLIGHTLY INCLUDED	SLIGHTLY INCLUDED	INCLUDED	

April 11, 2022

IGI Report Number

LG523272647

Description

**LABORATORY GROWN
DIAMOND**

Shape and Cutting Style

**SQUARE CUSHION
BRILLIANT**

Measurements

8.95 X 8.53 X 5.49 MM

GRADING RESULTS

Carat Weight

3.55 CARATS

Color Grade

G

Clarity Grade

VS 2

April 11, 2022

IGI Report Number

LG523272647

Description

**LABORATORY GROWN
DIAMOND**

Shape and Cutting Style

SQUARE CUSHION BRILLIANT

Measurements

8.95 X 8.53 X 5.49 MM

GRADING RESULTS

Carat Weight

3.55 CARATS

Color Grade

G

Clarity Grade

VS 2

ADDITIONAL GRADING INFORMATION

Polish

VERY GOOD

Symmetry

EXCELLENT

Fluorescence

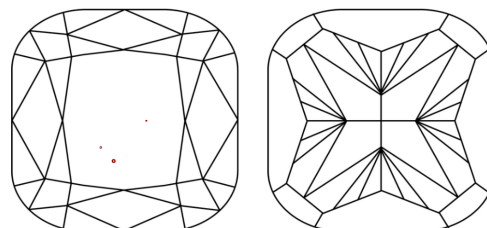
NONE

Inscription(s)

LABGROWN IGI LG523272647

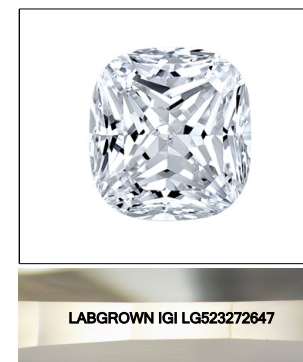
Comments: This Laboratory Grown Diamond was created by Chemical Vapor Deposition (CVD) growth process and may include post-growth treatment.
Type IIa

CLARITY CHARACTERISTICS



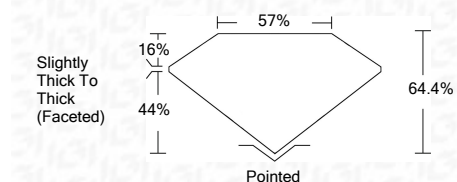
KEY TO SYMBOLS

Red symbols indicate internal characteristics.
Green symbols indicate external characteristics.



LASERSCRIBESM

Sample Image Used



ADDITIONAL GRADING INFORMATION

Polish

VERY GOOD

Symmetry

EXCELLENT

Fluorescence

NONE

Inscription(s)

**LABGROWN IGI
LG523272647**

Comments: This Laboratory Grown Diamond was created by Chemical Vapor Deposition (CVD) growth process and may include post-growth treatment.
Type IIa



IGI

April 11, 2022	IGI Report No. LG523272647	3.55 CARATS	G
SQUARE CUSHION BRILLIANT	8.95 X 8.53 X 5.49 MM	64.4%	57%
Carat Weight	Color Grade	Depth	Table
VS 2	Clarity Grade	Girdle	Slightly Thick To Thick (Faceted)
Pointed	Culet	Polish	VERY GOOD
EXCELLENT	Symmetry	Fluorescence	NONE
LABGROWN IGI LG523272647	Inscription(s)	Comments:	This Laboratory Grown Diamond was created by Chemical Vapor Deposition (CVD) growth process and may include post-growth treatment. Type IIa