

INTERNATIONAL
GEMOLOGICAL
INSTITUTE

ELECTRONIC COPY

LABORATORY GROWN DIAMOND REPORT

April 6, 2022

IGI Report Number

LG522254473

Description

LABORATORY GROWN
DIAMOND

Shape and Cutting Style

HEART BRILLIANT

Measurements

7.62 X 8.69 X 5.17 MM

GRADING RESULTS

Carat Weight

2.03 CARATS

Color Grade

D

Clarity Grade

VVS 2

ADDITIONAL GRADING INFORMATION

Polish

EXCELLENT

Symmetry

EXCELLENT

Fluorescence

NONE

Inscription(s)

LABGROWN IGI LG522254473

Comments: As Grown - No indication of post-growth treatment.
This Laboratory Grown Diamond was created by High Pressure High Temperature (HPHT) growth process.
Type II

LABORATORY GROWN DIAMOND REPORT

April 6, 2022

IGI Report Number

LG522254473

Description

LABORATORY GROWN
DIAMOND

Shape and Cutting Style

HEART BRILLIANT

Measurements

7.62 X 8.69 X 5.17 MM

GRADING RESULTS

Carat Weight

2.03 CARATS

Color Grade

D

Clarity Grade

VVS 2

ADDITIONAL GRADING INFORMATION

Polish

EXCELLENT

Symmetry

EXCELLENT

Fluorescence

NONE

Inscription(s)

LABGROWN IGI LG522254473

Comments: As Grown - No indication of post-growth treatment.
This Laboratory Grown Diamond was created by High Pressure High Temperature (HPHT) growth process.
Type II

LABORATORY GROWN DIAMOND REPORT

April 6, 2022

IGI Report No. LG522254473

HEART BRILLIANT

7.62 X 8.69 X 5.17 MM

Carat Weight

2.03 CARATS

Color Grade

D

Clarity Grade

VVS 2

Depth

60%

Table

60%

Girdle

Slightly Thick To Thick (Faceted)

Culet

Pointed

Polish

EXCELLENT

Symmetry

EXCELLENT

Fluorescence

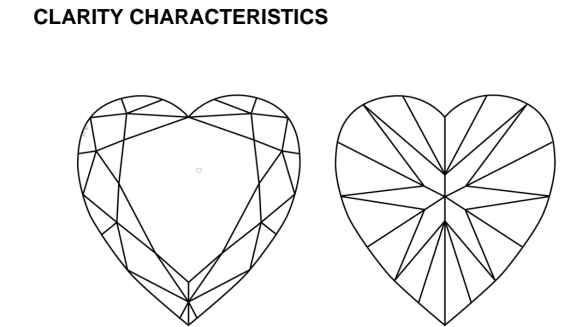
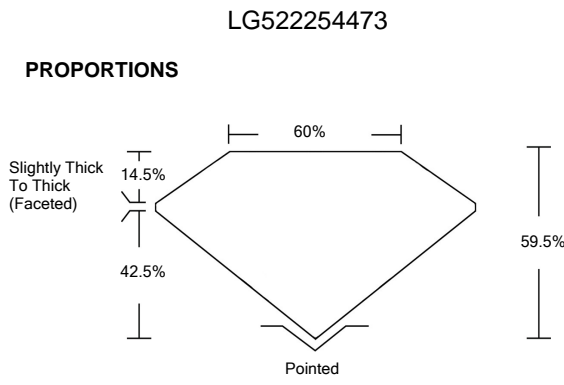
NONE

Inscription(s)

LABGROWN IGI LG522254473

Comments:

As Grown - No indication of post-growth treatment.
This Laboratory Grown Diamond was created by High Pressure High Temperature (HPHT) growth process.
Type II



KEY TO SYMBOLS

Red symbols indicate internal characteristics.
Green symbols indicate external characteristics.

GRADING SCALES

COLOR GRADING SCALE	CL	NC	FT	VLT	LT
	COLORLESS D-F	NEAR COLORLESS G-J	FAINT K-M	VERY LIGHT N-R	LIGHT S-Z
CLARITY (10x) GRADING SCALE	FL	IF	VVS	VS	SI
	FLAWLESS INTERNALLY FLAWLESS	VERY VERY SLIGHTLY INCLUDED	VERY SLIGHTLY INCLUDED	SLIGHTLY INCLUDED	INCLUDED



LASERSCRIBESM

Sample Image Used

LABORATORY GROWN DIAMOND REPORT

April 6, 2022

IGI Report Number

LG522254473

Description

LABORATORY GROWN
DIAMOND

Shape and Cutting Style

HEART BRILLIANT

Measurements

7.62 X 8.69 X 5.17 MM

GRADING RESULTS

Carat Weight

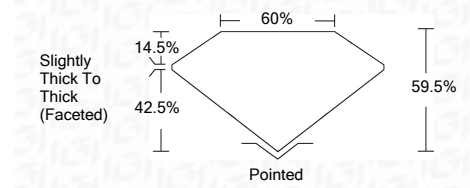
2.03 CARATS

Color Grade

D

Clarity Grade

VVS 2



ADDITIONAL GRADING INFORMATION

Polish

EXCELLENT

Symmetry

EXCELLENT

Fluorescence

NONE

Inscription(s)

LABGROWN IGI LG522254473

Comments: As Grown - No indication of post-growth treatment.
This Laboratory Grown Diamond was created by High Pressure High Temperature (HPHT) growth process.
Type II

