



ELECTRONIC COPY

LABORATORY GROWN DIAMOND REPORT

April 6, 2022
IGI Report Number LG522253097
Description LABORATORY GROWN DIAMOND
Shape and Cutting Style CUT CORNERED RECTANGULAR MODIFIED BRILLIANT
Measurements 8.75 X 6.06 X 4.23 MM

GRADING RESULTS

Carat Weight 2.04 CARATS
Color Grade H
Clarity Grade VS 1

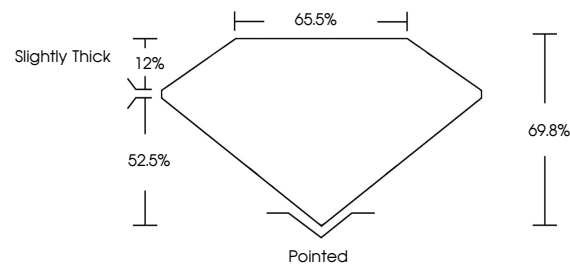
ADDITIONAL GRADING INFORMATION

Polish EXCELLENT
Symmetry EXCELLENT
Fluorescence NONE
Inscription(s) LABGROWN (IGI) LG522253097

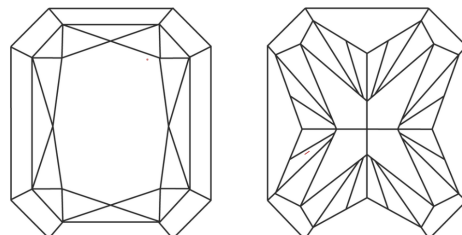
Comments: This Laboratory Grown Diamond was created by Chemical Vapor Deposition (CVD) growth process and may include post-growth treatment. Type IIa

LG522253097

PROPORTIONS



CLARITY CHARACTERISTICS

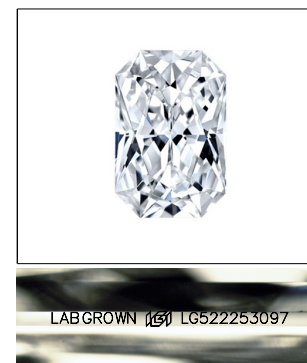


KEY TO SYMBOLS

Red symbols indicate internal characteristics.
Green symbols indicate external characteristics.

GRADING SCALES

Table with 2 columns: COLOR GRADING SCALE and CLARITY (10x) GRADING SCALE. Rows include color grades (CL, NC, FT, VLT, LT) and clarity grades (FL, IF, VVS, VS, SI, I).

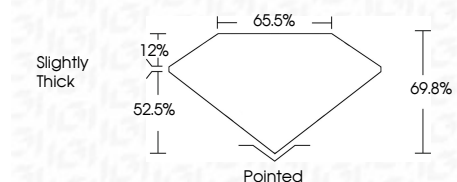


LASERSCRIBE SM
Sample Image Used

April 6, 2022
IGI Report Number LG522253097
Description LABORATORY GROWN DIAMOND
Shape and Cutting Style CUT CORNERED RECTANGULAR MODIFIED BRILLIANT
Measurements 8.75 X 6.06 X 4.23 MM

GRADING RESULTS

Carat Weight 2.04 CARATS
Color Grade H
Clarity Grade VS 1



ADDITIONAL GRADING INFORMATION

Polish EXCELLENT
Symmetry EXCELLENT
Fluorescence NONE
Inscription(s) LABGROWN (IGI) LG522253097

Comments: This Laboratory Grown Diamond was created by Chemical Vapor Deposition (CVD) growth process and may include post-growth treatment. Type IIa



Summary of report details including date, report number, description, measurements, grading results, and additional information.