



**ELECTRONIC COPY**

## LABORATORY GROWN DIAMOND REPORT

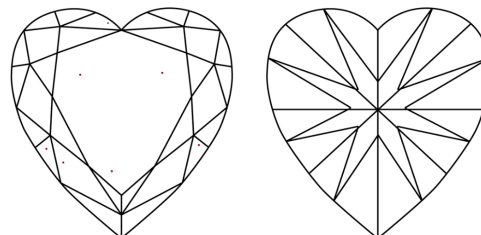
April 6, 2022	
IGI Report Number	LG522253007
Description	LABORATORY GROWN DIAMOND
Shape and Cutting Style	HEART BRILLIANT
Measurements	7.53 X 8.83 X 5.20 MM
GRADING RESULTS	
Carat Weight	2.02 CARATS
Color Grade	F
Clarity Grade	VS 1
ADDITIONAL GRADING INFORMATION	
Polish	EXCELLENT
Symmetry	EXCELLENT
Fluorescence	NONE
Inscription(s)	LABGROWN IGI LG522253007

Comments: This Laboratory Grown Diamond was created by Chemical Vapor Deposition (CVD) growth process and may include post-growth treatment.  
Type IIa

Diagram illustrating the proportions of a diamond-shaped facet (LG522253007):

- Top width: 54%
- Top thickness: 15%
- Bottom thickness: 39.5%
- Overall height: 58.9%
- Bottom shape: Pointed

## CLARITY CHARACTERISTICS



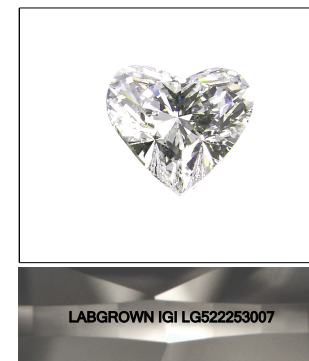
## KEY TO SYMBOLS

Red symbols indicate internal characteristics.  
Green symbols indicate external characteristics.

LABORATORY GROWN  
DIAMOND REPORT

## GRADING SCALES

COLOR GRADING SCALE	CL		NC		FT		VLT		LT	
	COLORLESS D-F		NEAR COLORLESS G-J		FAINT K-M		VERY LIGHT N-R		LIGHT S-Z	
CLARITY (10x) GRADING SCALE	FL	IF	VVS		VS		SI		I	
	FLAWLESS INTERNALLY FLAWLESS		VERY VERY SLIGHTLY INCLUDED		VERY SLIGHTLY INCLUDED		SLIGHTLY INCLUDED		INCLUDED	

LASERSCRIBE<sup>SM</sup>

Sample Image Used

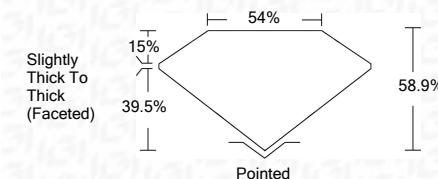


© IGI 2020, International Gemological Institute

FD - 10 20

## LABORATORY GROWN DIAMOND REPORT

April 6, 2022	
IGI Report Number	LG522253007
Description	LABORATORY GROWN DIAMOND
Shape and Cutting Style	HEART BRILLIANT
Measurements	7.53 X 8.83 X 5.20 MM
GRADING RESULTS	
Carat Weight	2.02 CARATS
Color Grade	F
Clarity Grade	VS 1



### ADDITIONAL GRADING INFORMATION

Polish	EXCELLENT
Symmetry	EXCELLENT
Fluorescence	NONE
Inscription(s)	LABGROWN IGI LG522253007

Comments: This Laboratory Grown Diamond was created by Chemical Vapor Deposition (CVD) growth process and may include post-growth treatment.  
Type IIa



April 6, 2022	GI Report No LG22Z63007	
	HEART BRILLIANT	
	25 X 25 X 8.3 X 5.20 MM	
	Carat Weight	
	Color Grade	2.02 CARATS
	Clarity Grade	VS1
	Depth	58.9%
	Table	54%
	Girdle	Slightly Thick To Thick (Faceted)
	Culet	Pointed
	Polish	EXCELLENT
	Symmetry	EXCELLENT
	Fluorescence	NONE
	Fluorescence Response(s)	LABGROWN G1 LG22Z63007
	Comments:	
	This Laboratory's Crown Diamond was created by The Chemical Vapor Deposition (CVD) growth process and may include post-growth treatment.	

This Laboratory Grown Diamond was created by Chemical Vapor Deposition (CVD) growth process and may include post-growth treatment.