

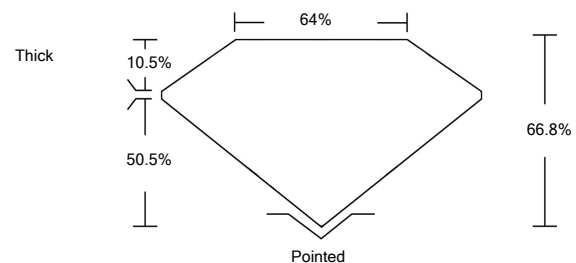


ELECTRONIC COPY

LABORATORY GROWN DIAMOND REPORT

LG522251994

PROPORTIONS



GRADING SCALES

COLOR GRADING SCALE	CL	NC	FT	VLT	LT	
	COLORLESS D-F	NEAR COLORLESS G-J	FAINT K-M	VERY LIGHT N-R	LIGHT S-Z	
CLARITY (10x) GRADING SCALE	FL	IF	VVS	VS	SI	I
	FLAWLESS INTERNALLY FLAWLESS	VERY VERY SLIGHTLY INCLUDED	VERY SLIGHTLY INCLUDED	SLIGHTLY INCLUDED	INCLUDED	

April 5, 2022
 IGI Report Number **LG522251994**
 Description **LABORATORY GROWN DIAMOND**
 Shape and Cutting Style **CUT CORNERED RECTANGULAR MODIFIED BRILLIANT**
 Measurements **8.73 X 6.72 X 4.49 MM**

April 5, 2022
 IGI Report Number **LG522251994**
 Description **LABORATORY GROWN DIAMOND**
 Shape and Cutting Style **CUT CORNERED RECTANGULAR MODIFIED BRILLIANT**
 Measurements **8.73 X 6.72 X 4.49 MM**

GRADING RESULTS

Carat Weight **2.42 CARATS**
 Color Grade **H**
 Clarity Grade **VS 2**

GRADING RESULTS

Carat Weight **2.42 CARATS**
 Color Grade **H**
 Clarity Grade **VS 2**

ADDITIONAL GRADING INFORMATION

Polish **EXCELLENT**
 Symmetry **EXCELLENT**
 Fluorescence **NONE**
 Inscription(s) **LABGROWN IGI LG522251994**

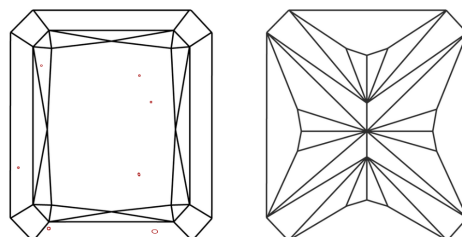
ADDITIONAL GRADING INFORMATION

Polish **EXCELLENT**
 Symmetry **EXCELLENT**
 Fluorescence **NONE**
 Inscription(s) **LABGROWN IGI LG522251994**

Comments: This Laboratory Grown Diamond was created by Chemical Vapor Deposition (CVD) growth process and may include post-growth treatment. Type IIa

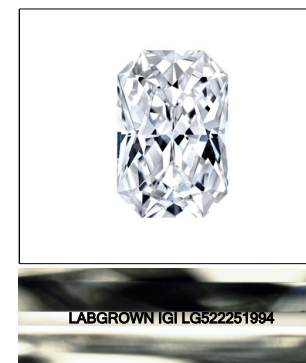
Comments: This Laboratory Grown Diamond was created by Chemical Vapor Deposition (CVD) growth process and may include post-growth treatment. Type IIa

CLARITY CHARACTERISTICS

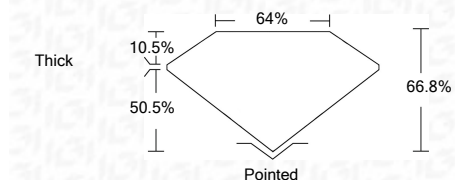


KEY TO SYMBOLS

Red symbols indicate internal characteristics.
 Green symbols indicate external characteristics.



LASERSCRIBESM
 Sample Image Used



IGI

April 5, 2022
 IGI Report No. LG522251994
CUT CORNERED RECT. MODIFIED BRILLIANT
 Dimensions: 8.73 X 6.72 X 4.49 MM
 Carat Weight: 2.42 CARATS
 Color Grade: H
 Clarity Grade: VS 2
 Depth: 66.8%
 Table: 64%
 Girdle: Thick
 Culet: Pointed
 Polish: EXCELLENT
 Symmetry: EXCELLENT
 Fluorescence: NONE
 Inscription(s): LABGROWN IGI LG522251994
 Comments: This Laboratory Grown Diamond was created by Chemical Vapor Deposition (CVD) growth process and may include post-growth treatment. Type IIa