



**ELECTRONIC COPY**

**LABORATORY GROWN DIAMOND REPORT**

April 23, 2022  
 IGI Report Number **LG522239824**  
 Description **LABORATORY GROWN  
DIAMOND**  
 Shape and Cutting Style **CUT CORNERED  
RECTANGULAR MODIFIED  
BRILLIANT**  
 Measurements **8.21 X 6.39 X 4.23 MM**

**GRADING RESULTS**

Carat Weight **2.00 CARATS**  
 Color Grade **H**  
 Clarity Grade **VS 2**

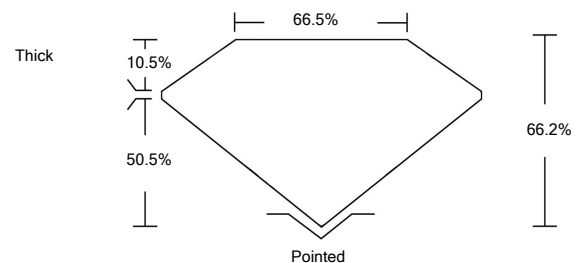
**ADDITIONAL GRADING INFORMATION**

Polish **EXCELLENT**  
 Symmetry **EXCELLENT**  
 Fluorescence **NONE**  
 Inscription(s) **LABGROWN IGI LG522239824**

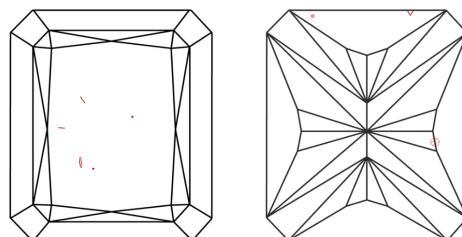
Comments: This Laboratory Grown Diamond was created by Chemical Vapor Deposition (CVD) growth process and may include post-growth treatment.  
 Type IIa

LG522239824

**PROPORTIONS**



**CLARITY CHARACTERISTICS**

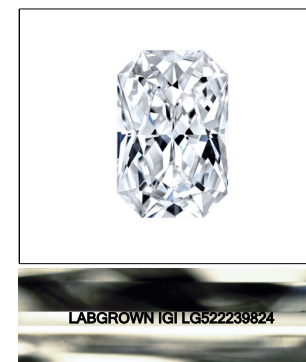


**KEY TO SYMBOLS**

Red symbols indicate internal characteristics.  
 Green symbols indicate external characteristics.

**GRADING SCALES**

COLOR GRADING SCALE	CL	NC	FT	VLT	LT	
	COLORLESS D-F	NEAR COLORLESS G-J	FAINT K-M	VERY LIGHT N-R	LIGHT S-Z	
CLARITY (10x) GRADING SCALE	FL	IF	VVS	VS	SI	I
	FLAWLESS INTERNALLY FLAWLESS	VERY VERY SLIGHTLY INCLUDED	VERY SLIGHTLY INCLUDED	SLIGHTLY INCLUDED	INCLUDED	

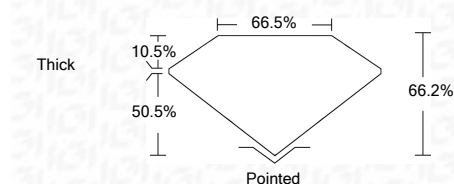


**LASERSCRIBE<sup>SM</sup>**  
 Sample Image Used

April 23, 2022  
 IGI Report Number **LG522239824**  
 Description **LABORATORY GROWN  
DIAMOND**  
 Shape and Cutting Style **CUT CORNERED  
RECTANGULAR MODIFIED  
BRILLIANT**  
 Measurements **8.21 X 6.39 X 4.23 MM**

**GRADING RESULTS**

Carat Weight **2.00 CARATS**  
 Color Grade **H**  
 Clarity Grade **VS 2**



**ADDITIONAL GRADING INFORMATION**

Polish **EXCELLENT**  
 Symmetry **EXCELLENT**  
 Fluorescence **NONE**  
 Inscription(s) **LABGROWN IGI LG522239824**

Comments: This Laboratory Grown Diamond was created by Chemical Vapor Deposition (CVD) growth process and may include post-growth treatment.  
 Type IIa



April 23, 2022  
 IGI Report No. LG522239824  
**CUT CORNERED RECT. MODIFIED  
BRILLIANT**  
 Dimensions **8.21 X 6.39 X 4.23 MM**  
 Carat Weight **2.00 CARATS**  
 Color Grade **H**  
 Clarity Grade **VS 2**  
 Depth **66.2%**  
 Table **66.5%**  
 Girdle **Thick**  
 Culet **Pointed**  
 Polish **EXCELLENT**  
 Symmetry **EXCELLENT**  
 Fluorescence **NONE**  
 Inscription(s) **LABGROWN IGI  
LG522239824**  
 Comments: This Laboratory Grown Diamond was created by Chemical Vapor Deposition (CVD) growth process and may include post-growth treatment.  
 Type IIa