



**ELECTRONIC COPY**

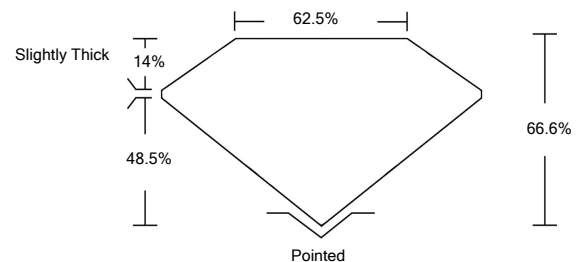
**LABORATORY GROWN DIAMOND REPORT**

|                                       |  |
|---------------------------------------|--|
| April 5, 2022                         |  |
| IGI Report Number                     | <b>LG522239790</b>   |
| Description                           | <b>LABORATORY GROWN<br/>DIAMOND</b>                        |
| Shape and Cutting Style               | <b>CUT CORNERED<br/>RECTANGULAR MODIFIED<br/>BRILLIANT</b> |
| Measurements                          | <b>9.04 X 6.71 X 4.47 MM</b>                               |
| <b>GRADING RESULTS</b>                |  |
| Carat Weight                          | <b>2.50 CARATS</b>   |
| Color Grade                           | <b>G</b>   |
| Clarity Grade                         | <b>VS 2</b>  |
| <b>ADDITIONAL GRADING INFORMATION</b> |  |
| Polish                                | <b>EXCELLENT</b>   |
| Symmetry                              | <b>EXCELLENT</b>   |
| Fluorescence                          | <b>NONE</b>  |
| Inscription(s)                        | <b>LABGROWN IGI LG522239790</b>                            |

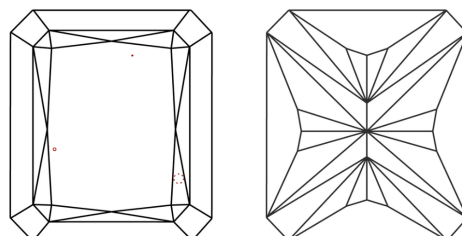
Comments: This Laboratory Grown Diamond was created by Chemical Vapor Deposition (CVD) growth process and may include post-growth treatment.  
Type IIa

LG522239790

**PROPORTIONS**



**CLARITY CHARACTERISTICS**

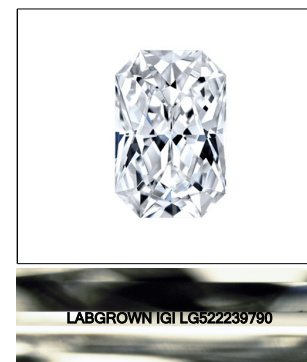


**KEY TO SYMBOLS**

Red symbols indicate internal characteristics.  
Green symbols indicate external characteristics.

**GRADING SCALES**

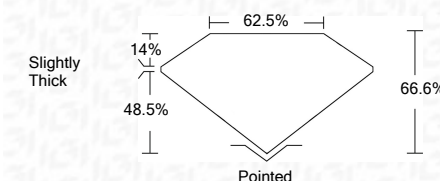
|                             |                              |                             |                        |                   |           |   |
|-----------------------------|------------------------------|-----------------------------|------------------------|-------------------|-----------|---|
| COLOR GRADING SCALE         | CL                           | NC                          | FT                     | VLT               | LT        |   |
|                             | COLORLESS D-F                | NEAR COLORLESS G-J          | FAINT K-M              | VERY LIGHT N-R    | LIGHT S-Z |   |
| CLARITY (10x) GRADING SCALE | FL                           | IF                          | VVS                    | VS                | SI        | I |
|                             | FLAWLESS INTERNALLY FLAWLESS | VERY VERY SLIGHTLY INCLUDED | VERY SLIGHTLY INCLUDED | SLIGHTLY INCLUDED | INCLUDED  |   |



LASERSCRIBE<sup>SM</sup>

Sample Image Used

|                         |  |
|-------------------------|--|
| April 5, 2022           |  |
| IGI Report Number       | <b>LG522239790</b>   |
| Description             | <b>LABORATORY GROWN<br/>DIAMOND</b>                        |
| Shape and Cutting Style | <b>CUT CORNERED<br/>RECTANGULAR MODIFIED<br/>BRILLIANT</b> |
| Measurements            | <b>9.04 X 6.71 X 4.47 MM</b>                               |
| <b>GRADING RESULTS</b>  |  |
| Carat Weight            | <b>2.50 CARATS</b>   |
| Color Grade             | <b>G</b>   |
| Clarity Grade           | <b>VS 2</b>  |



**ADDITIONAL GRADING INFORMATION**

|                |                                 |
|----------------|---------------------------------|
| Polish         | <b>EXCELLENT</b>                |
| Symmetry       | <b>EXCELLENT</b>                |
| Fluorescence   | <b>NONE</b>                     |
| Inscription(s) | <b>LABGROWN IGI LG522239790</b> |

Comments: This Laboratory Grown Diamond was created by Chemical Vapor Deposition (CVD) growth process and may include post-growth treatment.  
Type IIa



**IGI**



|   |  |
|---|--|
| April 5, 2022                                   |  |
| IGI Report No. LG522239790                      |  |
| CUT CORNERED RECT. MODIFIED BRILLIANT X 4.47 MM |  |
| Carat Weight                                    | <b>2.50 CARATS</b>   |
| Color Grade                                     | <b>G</b>   |
| Clarity Grade                                   | <b>VS 2</b>  |
| Depth   | <b>66.6%</b>   |
| Table   | <b>62.5%</b>   |
| Girdle  | <b>Slightly Thick</b>  |
| Culet   | <b>Pointed</b>   |
| Polish  | <b>EXCELLENT</b>   |
| Symmetry  | <b>EXCELLENT</b>   |
| Fluorescence                                    | <b>NONE</b>  |
| Inscription(s)                                  | <b>LABGROWN IGI LG522239790</b>  |
| Comments:                                       | <b>This Laboratory Grown Diamond was created by Chemical Vapor Deposition (CVD) growth process and may include post-growth treatment. Type IIa</b> |