

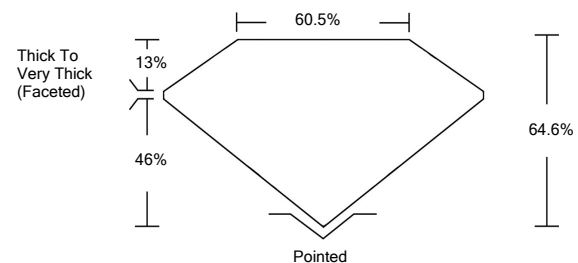


ELECTRONIC COPY

LABORATORY GROWN DIAMOND REPORT

LG522237392

PROPORTIONS



GRADING SCALES

COLOR GRADING SCALE	CL	NC	FT	VL	LT	
	COLORLESS D-F	NEAR COLORLESS G-J	FAINT K-M	VERY LIGHT N-R	LIGHT S-Z	
CLARITY (10x) GRADING SCALE	FL	IF	VVS	VS	SI	I
	FLAWLESS INTERNALLY FLAWLESS	VERY VERY SLIGHTLY INCLUDED	VERY SLIGHTLY INCLUDED	SLIGHTLY INCLUDED	INCLUDED	

April 2, 2022

IGI Report Number

LG522237392

Description

**LABORATORY GROWN
DIAMOND**

Shape and Cutting Style

CUSHION BRILLIANT

Measurements

8.97 X 8.19 X 5.29 MM

GRADING RESULTS

Carat Weight

3.51 CARATS

Color Grade

H

Clarity Grade

VS 1

April 2, 2022

IGI Report Number

LG522237392

Description

**LABORATORY GROWN
DIAMOND**

Shape and Cutting Style

CUSHION BRILLIANT

Measurements

8.97 X 8.19 X 5.29 MM

GRADING RESULTS

Carat Weight

3.51 CARATS

Color Grade

H

Clarity Grade

VS 1

ADDITIONAL GRADING INFORMATION

Polish

EXCELLENT

Symmetry

EXCELLENT

Fluorescence

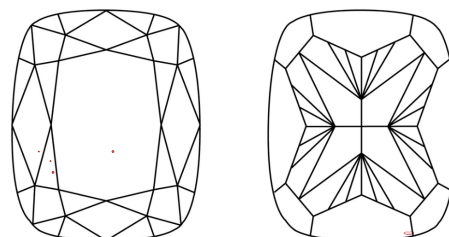
NONE

Inscription(s)

LABGROWN IGI LG522237392

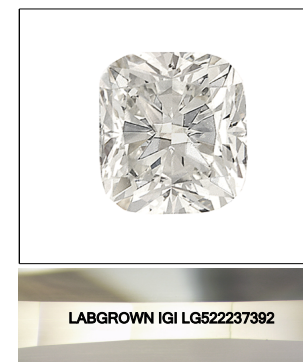
Comments: This Laboratory Grown Diamond was created by Chemical Vapor Deposition (CVD) growth process and may include post-growth treatment.
Type IIa

CLARITY CHARACTERISTICS

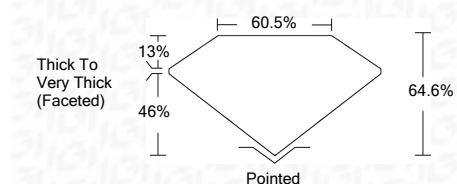


KEY TO SYMBOLS

Red symbols indicate internal characteristics.
Green symbols indicate external characteristics.



LASERSCRIBESM
Sample Image Used



ADDITIONAL GRADING INFORMATION

Polish

EXCELLENT

Symmetry

EXCELLENT

Fluorescence

NONE

Inscription(s)

LABGROWN IGI LG522237392

Comments: This Laboratory Grown Diamond was created by Chemical Vapor Deposition (CVD) growth process and may include post-growth treatment.
Type IIa



IGI



April 2, 2022	IGI Report No. LG522237392	3.51 CARATS	H
	CUSHION BRILLIANT		VS 1
	8.97 X 8.19 X 5.29 MM		64.6%
	Carat Weight		60.5%
	Color Grade		Thick To Very Thick (Faceted)
	Clarity Grade		Pointed
	Depth		EXCELLENT
	Table		EXCELLENT
	Girdle		EXCELLENT
	Culet		NONE
	Polish		LABGROWN IGI
	Symmetry		LG522237392
	Fluorescence		
	Inscription(s)		
	Comments:		

This Laboratory Grown Diamond was created by Chemical Vapor Deposition (CVD) growth process and may include post-growth treatment.
Type IIa