



ELECTRONIC COPY

LABORATORY GROWN DIAMOND REPORT

February 26, 2024	
IGI Report Number	LG522235482
Description	LABORATORY GROWN DIAMOND
Shape and Cutting Style	PRINCESS CUT
Measurements	9.09 X 8.87 X 6.67 MM

GRADING RESULTS

Carat Weight	5.00 CARATS
Color Grade	FANCY INTENSE PINK
Clarity Grade	VS 1

ADDITIONAL GRADING INFORMATION

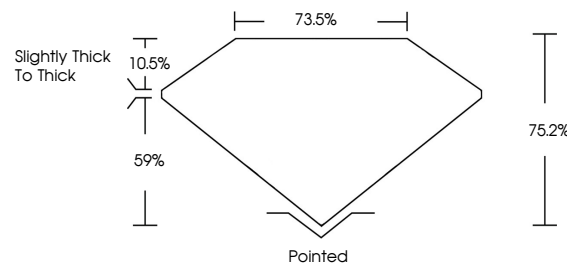
Polish	EXCELLENT
Symmetry	EXCELLENT
Fluorescence	SLIGHT
Inscription(s)	LABGROWN 1131 LG522235482

Comments: This Laboratory Grown Diamond was created by Chemical Vapor Deposition (CVD) growth process.
Indications of post-growth treatment.

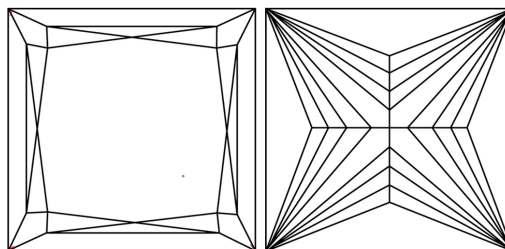
LABORATORY GROWN DIAMOND REPORT

LG522235482
Report verification at lgi.org

PROPORTIONS



CLARITY CHARACTERISTICS



KEY TO SYMBOLS

Red symbols indicate internal characteristics.
Green symbols indicate external characteristics.

LABORATORY GROWN
DIAMOND REPORT

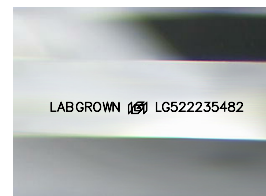
GRADING SCALES

CLARITY

IF	VVS ¹⁻²	VS ¹⁻²	SI ¹⁻²	I ¹⁻³
Internally Flawless	Very Very Slightly Included	Very Slightly Included	Slightly Included	Included

COLOR

D	E	F	G	H	I	J	Faint	Very Light	Light
Light Tint			Fancy Light		Fancy		Fancy Intense		Fancy Vivid



Sample Image Used

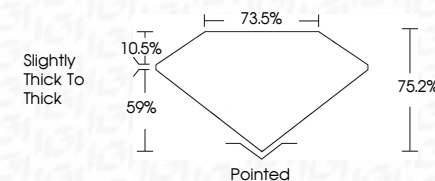


© IGI 2020, International Gemological Institute

FD - 10 20

LABORATORY GROWN DIAMOND REPORT

February 26, 2024	
IGI Report Number	LG522235482
Description	LABORATORY GROWN DIAMOND
Shape and Cutting Style	PRINCESS CUT
Measurements	9.09 X 8.87 X 6.67 MM
GRADING RESULTS	
Carat Weight	5.00 CARATS
Color Grade	FANCY INTENSE PINK
Clarity Grade	VS 1



ADDITIONAL GRADING INFORMATION

Polish	EXCELLENT
Symmetry	EXCELLENT
Fluorescence	SLIGHT
Inscription(s)	LABGROWN (IGI) LG522235482
Comments: This Laboratory Grown Diamond was created by Chemical Vapor Deposition (CVD) growth process.	
Indications of post-growth treatment.	



IG

February 26, 2024	5.00 CARATS
GI Report No LG52235462	FANCY INTENSE PINK
PRINCESS CUT	VS 1
	75.2%
	73.5%
0.09 X 8.07 X 6.07 MM	Slightly Thick To Thick
Carat Weight	Pointed
Color Grade	EXCELLENT
Clarity Grade	EXCELLENT
Depth	SLIGHT
Table	LASER-GROWN (88)
Grade	LG52235462
Culet	
Polish	
Symmetry	
Fluorescence	
Inscriptions(s)	

Comments:

This Laboratory Grown Diamond was created by Chemical Vapor Deposition and shows no indications of post-growth treatment.