



**ELECTRONIC COPY**

## LABORATORY GROWN DIAMOND REPORT

February 26, 2024	
IGI Report Number	LG522235479
Description	LABORATORY GROWN DIAMOND
Shape and Cutting Style	PRINCESS CUT
Measurements	9.22 X 9.09 X 6.69 MM

## GRADING RESULTS

Carat Weight	5.05 CARATS
Color Grade	FANCY INTENSE PINK
Clarity Grade	VS 1

### ADDITIONAL GRADING INFORMATION

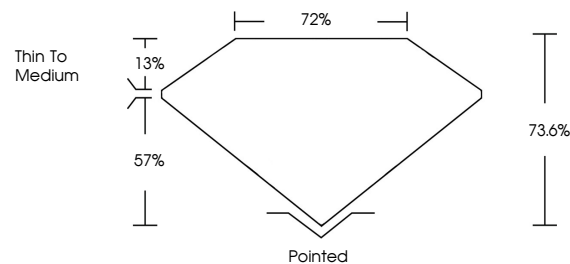
Polish	EXCELLENT
Symmetry	EXCELLENT
Fluorescence	SLIGHT
Inscription(s)	LABGROWN 16 LG522235479

Comments: This Laboratory Grown Diamond was created by Chemical Vapor Deposition (CVD) growth process.  
Indications of post-growth treatment.

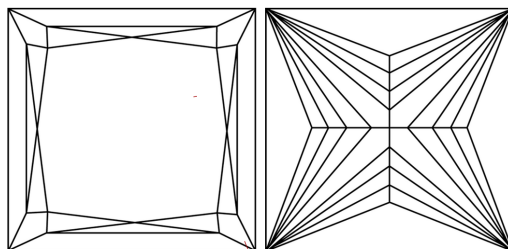
## LABORATORY GROWN DIAMOND REPORT

LG522235479  
Report verification at [igi.org](https://igi.org)

## PROPORTIONS



## CLARITY CHARACTERISTICS



## KEY TO SYMBOLS

Red symbols indicate internal characteristics.  
Green symbols indicate external characteristics.

LABORATORY GROWN  
DIAMOND REPORT

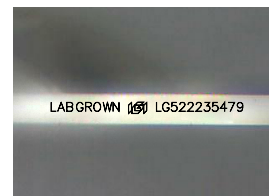
## GRADING SCALES

## CLARITY

IF	VVS <sup>1-2</sup>	VS <sup>1-2</sup>	SI <sup>1-2</sup>	I <sup>1-3</sup>
Internally Flawless	Very Very Slightly Included	Very Slightly Included	Slightly Included	Included

**COLOR**

D	E	F	G	H	I	J	Faint	Very Light	Light
Light Tint			Fancy Light		Fancy		Fancy Intense		Fancy Vivid



Sample Image Used



© IGI 2020, International Gemological Institute

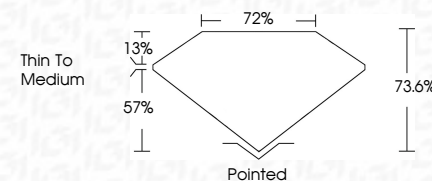
FD - 10 20



THIS DOCUMENT WAS PRODUCED WITH THE FOLLOWING SECURITY MEASURES: SPECIAL DOCUMENT PAPER, INK SCREENS, WATERMARK, BACKGROUND DESIGNS, HOLOGRAM AND OTHER SECURITY FEATURES NOT LISTED AND DO EXCEED DOCUMENT SECURITY INDUSTRY GUIDELINES

## LABORATORY GROWN DIAMOND REPORT

February 26, 2024	
IGI Report Number	LG522235479
Description	LABORATORY GROWN DIAMOND
Shape and Cutting Style	PRINCESS CUT
Measurements	9.22 X 9.09 X 6.69 MM
<b>GRADING RESULTS</b>	
Carat Weight	5.05 CARATS
Color Grade	FANCY INTENSE PINK
Clarity Grade	VS 1



### ADDITIONAL GRADING INFORMATION

Polish	EXCELLENT
Symmetry	EXCELLENT
Fluorescence	SLIGHT
Inscription(s)	LABGROWN (1/3) LG522235479
<p>Comments: This Laboratory Grown Diamond was created by Chemical Vapor Deposition (CVD) growth process.</p> <p>Indications of post-growth treatment.</p>	



IG

February 26, 2024  
GI Report No LG522235479  
PRINCESS CLIT

2.22 X 9.09 X 6.69 MM	Carat Weight	5.05 CARATS
	Color Grade	FANCY INTENSE PINK
	Clarity Grade	VS 1
	Depth	73.6%
	Table	72%
	Girdle	Thin To Medium
	Culet	Pointed
	Polish	EXCELLENT
	Symmetry	EXCELLENT
	Fluorescence	SLIGHT
	Inscription(s)	LABGROWN 169

**Comments:**  
This Laboratory Grown Diamond was created by Chemical Vapor Deposition (CVD) growth process.  
indications of post-growth treatment