



ELECTRONIC COPY

LABORATORY GROWN DIAMOND REPORT

February 26, 2024	
IGI Report Number	LG522235473
Description	LABORATORY GROWN DIAMOND
Shape and Cutting Style	PRINCESS CUT
Measurements	9.06 X 8.99 X 6.71 MM

GRADING RESULTS

Carat Weight	5.01 CARATS
Color Grade	FANCY INTENSE PINK
Clarity Grade	VS 2

ADDITIONAL GRADING INFORMATION

Polish	EXCELLENT
Symmetry	EXCELLENT
Fluorescence	SLIGHT
Inscription(s)	LABGROWN 1131 LG522235473

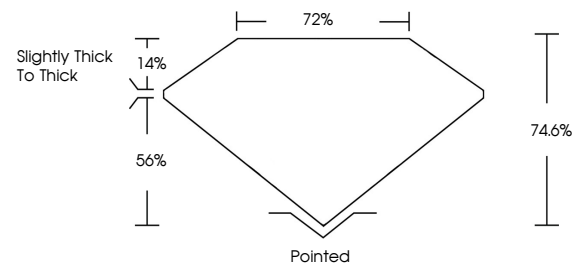
Comments: This Laboratory Grown Diamond was created by Chemical Vapor Deposition (CVD) growth process.
Indications of post-growth treatment.

LABORATORY GROWN DIAMOND REPORT

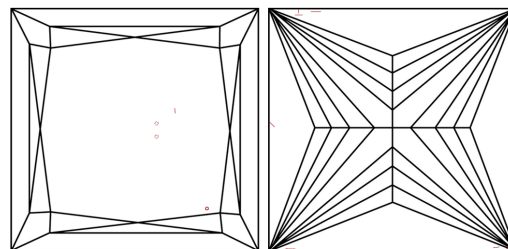
LG522235473

Report verification at igi.org

PROPORTIONS



CLARITY CHARACTERISTICS



KEY TO SYMBOLS

Red symbols indicate internal characteristics.
Green symbols indicate external characteristics.

LABORATORY GROWN
DIAMOND REPORT

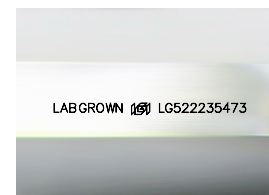
GRADING SCALES

CLARITY

IF	VVS ¹⁻²	VS ¹⁻²	SI ¹⁻²	I ¹⁻³
Internally Flawless	Very Very Slightly Included	Very Slightly Included	Slightly Included	Included

COLOR

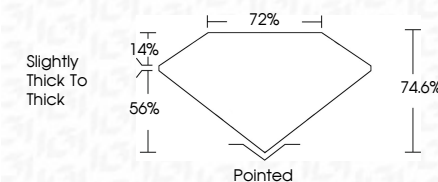
D	E	F	G	H	I	J	Faint	Very Light	Light
Light Tint			Fancy Light		Fancy		Fancy Intense		Fancy Vivid



Sample Image Used



February 26, 2024	
IGI Report Number	LG522235473
Description	LABORATORY GROWN DIAMOND
Shape and Cutting Style	PRINCESS CUT
Measurements	9.06 X 8.99 X 6.71 MM
GRADING RESULTS	
Carat Weight	5.01 CARATS
Color Grade	FANCY INTENSE PINK
Clarity Grade	VS 2



ADDITIONAL GRADING INFORMATION

Polish	EXCELLENT
Symmetry	EXCELLENT
Fluorescence	SLIGHT
Inscription(s)	LABGROWN (1/3) LG522235473
Comments: This Laboratory Grown Diamond was created by Chemical Vapor Deposition (CVD) growth process.	
Indications of post-growth treatment.	



© IGI 2020, International Gemological Institute

FD - 10 20

www.igi.org

THIS DOCUMENT WAS PRODUCED WITH THE FOLLOWING SECURITY MEASURES: SPECIAL DOCUMENT PAPER, INK SCREENS, WATERMARK BACKGROUND DESIGNS, HOLOGRAM AND OTHER SECURITY FEATURES NOT LISTED AND DO EXCEED DOCUMENT SECURITY INDUSTRY GUIDELINES

February 26, 2024
GI Report No LG522235473
BRINCESS CIT

0.06 X 8.99 X 6.71 MM						
Coral Weight	5.01 CARATS					
Color Grade	FANCY INTENSE PINK					
Clarity Grade	VS 2					
Depth	74.6%					
Table	72%					
Girdle	Slightly Thick To Thick					
Quiet	Pinked					
Polish	EXCELLENT					
Symmetry	EXCELLENT					
Fluorescence	LIGHT					
Measurements (mm)	1.85X0.95X0.65					

Comments:
This Laboratory Grown Diamond was
created by Chemical Vapor Deposition
(CVD) growth process.