



**ELECTRONIC COPY**

**LABORATORY GROWN DIAMOND REPORT**

February 26, 2024  
 IGI Report Number **LG522235459**  
 Description **LABORATORY GROWN  
DIAMOND**  
 Shape and Cutting Style **PRINCESS CUT**  
 Measurements **9.20 X 9.19 X 6.73 MM**

**GRADING RESULTS**

Carat Weight **5.13 CARATS**  
 Color Grade **FANCY INTENSE PINK**  
 Clarity Grade **VS 1**

**ADDITIONAL GRADING INFORMATION**

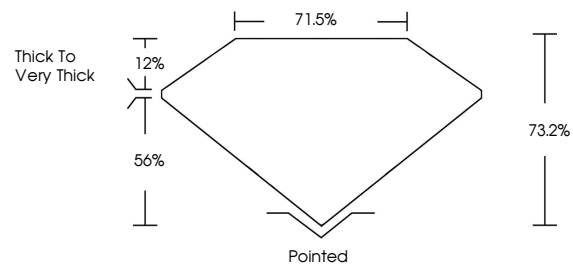
Polish **EXCELLENT**  
 Symmetry **EXCELLENT**  
 Fluorescence **SLIGHT**  
 Inscription(s) **LABGROWN (IGI) LG522235459**

Comments: This Laboratory Grown Diamond was created by Chemical Vapor Deposition (CVD) growth process.  
 Indications of post-growth treatment.

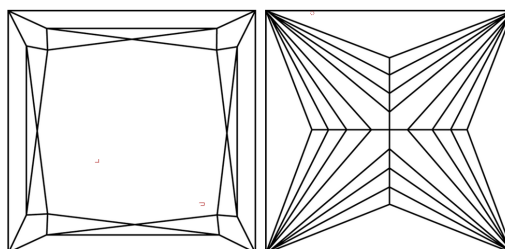
**LABORATORY GROWN DIAMOND REPORT**

**LG522235459**  
 Report verification at [igi.org](http://igi.org)

**PROPORTIONS**



**CLARITY CHARACTERISTICS**



**KEY TO SYMBOLS**

Red symbols indicate internal characteristics.  
 Green symbols indicate external characteristics.

**LABORATORY GROWN  
DIAMOND REPORT**

**GRADING SCALES**

**CLARITY**

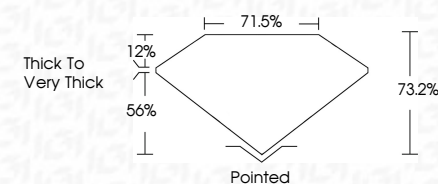
IF	VVS <sup>1-2</sup>	VS <sup>1-2</sup>	SI <sup>1-2</sup>	I <sup>1-3</sup>
Internally Flawless	Very Very Slightly Included	Very Slightly Included	Slightly Included	Included

**COLOR**

D	E	F	G	H	I	J	Faint	Very Light	Light
Light Tint	Fancy Light	Fancy	Fancy Intense	Fancy Vivid					

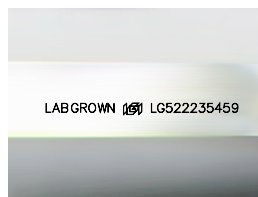
**LABORATORY GROWN DIAMOND REPORT**

February 26, 2024  
 IGI Report Number **LG522235459**  
 Description **LABORATORY GROWN  
DIAMOND**  
 Shape and Cutting Style **PRINCESS CUT**  
 Measurements **9.20 X 9.19 X 6.73 MM**  
**GRADING RESULTS**  
 Carat Weight **5.13 CARATS**  
 Color Grade **FANCY INTENSE PINK**  
 Clarity Grade **VS 1**



**ADDITIONAL GRADING INFORMATION**

Polish **EXCELLENT**  
 Symmetry **EXCELLENT**  
 Fluorescence **SLIGHT**  
 Inscription(s) **LABGROWN (IGI) LG522235459**  
 Comments: This Laboratory Grown Diamond was created by Chemical Vapor Deposition (CVD) growth process.  
 Indications of post-growth treatment.



Sample Image Used



**IGI**

February 26, 2024  
 IGI Report No **LG522235459**  
**PRINCESS CUT**  
**5.13 CARATS**  
 Carat Weight  
**FANCY INTENSE PINK**  
 Color Grade  
**VS 1**  
 Clarity Grade  
**73.2%**  
 Table  
**71.5%**  
 Girdle  
**Thick to Very Thick**  
 Pointed  
**EXCELLENT**  
 Polish  
**EXCELLENT**  
 Symmetry  
**SLIGHT**  
 Fluorescence  
**LABGROWN (IGI) LG522235459**  
 Inscription(s)

Comments: This Laboratory Grown Diamond was created by Chemical Vapor Deposition (CVD) growth process.  
 Indications of post-growth treatment.

