



INTERNATIONAL GEMOLOGICAL INSTITUTE

ELECTRONIC COPY

LABORATORY GROWN DIAMOND REPORT

LG522230218

IGI LABORATORY GROWN DIAMOND ID REPORT

April 12, 2022

IGI Report Number **LG522230218**

OVAL BRILLIANT

7.26 X 5.34 X 3.47 MM

Carat Weight 0.90 CARAT

Color Grade FANCY INTENSE BLUE

Clarity Grade VS 1

Polish EXCELLENT

Symmetry EXCELLENT

Fluorescence NONE

Inscription(s) LABGROWN IGI

LG522230218

Comments: This Laboratory Grown Diamond was created by High Pressure High Temperature (HPHT) growth process.

Indications of post-growth treatment.

LABORATORY GROWN DIAMOND REPORT

IGI LABORATORY GROWN DIAMOND IDENTIFICATION REPORT

April 12, 2022

IGI Report Number LG522230218

Description LABORATORY GROWN DIAMOND

Shape and Cutting Style OVAL BRILLIANT

Measurements 7.26 X 5.34 X 3.47 MM

GRADING RESULTS

Carat Weight 0.90 CARAT

Color Grade FANCY INTENSE BLUE

Clarity Grade VS 1

ADDITIONAL GRADING INFORMATION

Polish EXCELLENT

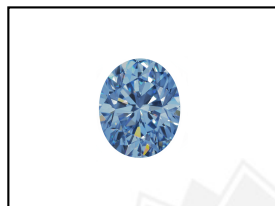
Symmetry EXCELLENT

Fluorescence NONE

Inscription(s) LABGROWN IGI LG522230218

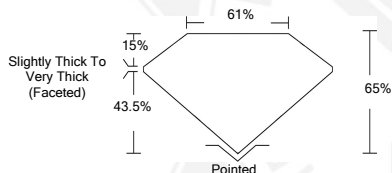
Comments: This Laboratory Grown Diamond was created by High Pressure High Temperature (HPHT) growth process.

Indications of post-growth treatment.



LASERSCRIBESM

Sample Images Used



IGI LABORATORY GROWN DIAMOND ID REPORT

April 12, 2022

IGI Report Number **LG522230218**

OVAL BRILLIANT

7.26 X 5.34 X 3.47 MM

Carat Weight 0.90 CARAT

Color Grade FANCY INTENSE BLUE

Clarity Grade VS 1

Polish EXCELLENT

Symmetry EXCELLENT

Fluorescence NONE

Inscription(s) LABGROWN IGI

LG522230218

Comments: This Laboratory Grown Diamond was created by High Pressure High Temperature (HPHT) growth process.

Indications of post-growth treatment.



THIS DOCUMENT WAS PRODUCED WITH THE FOLLOWING SECURITY MEASURES: SPECIAL DOCUMENT PAPER, INK SCREENS, WATERMARK, BACKGROUND DESIGN, HOLOGRAM AND OTHER SECURITY FEATURES NOT LISTED AND DO EXCEED DOCUMENT SECURITY INDUSTRY GUIDELINES.

For Terms & Conditions and to verify this report, please visit www.igi.org