



ELECTRONIC COPY

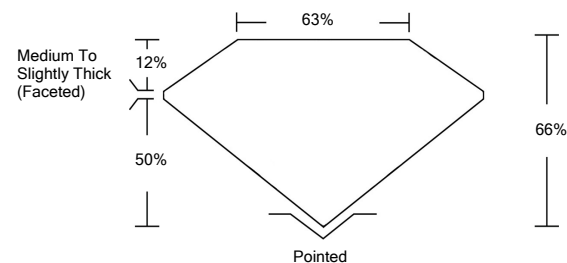
LABORATORY GROWN DIAMOND REPORT

April 8, 2022	
IGI Report Number	LG522229811
Description	LABORATORY GROWN DIAMOND
Shape and Cutting Style	CUSHION BRILLIANT
Measurements	8.63 X 6.79 X 4.48 MM
GRADING RESULTS	
Carat Weight	2.04 CARATS
Color Grade	G
Clarity Grade	VS 1
ADDITIONAL GRADING INFORMATION	
Polish	EXCELLENT
Symmetry	EXCELLENT
Fluorescence	NONE
Inscription(s)	LABGROWN IGI LG522229811

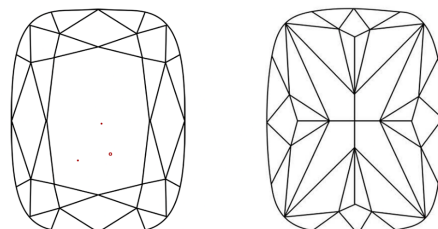
Comments: This Laboratory Grown Diamond was created by Chemical Vapor Deposition (CVD) growth process and may include post-growth treatment.
Type IIa

LG522229811

PROPORTIONS



CLARITY CHARACTERISTICS



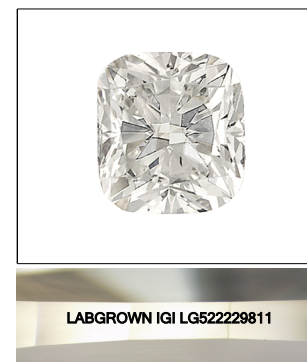
KEY TO SYMBOLS

Red symbols indicate internal characteristics.
Green symbols indicate external characteristics.

**LABORATORY GROWN
DIAMOND REPORT**

GRADING SCALES

COLOR GRADING SCALE	CL	NC	FT	VL	LT	
	COLORLESS D-F	NEAR COLORLESS G-J	FAINT K-M	VERY LIGHT N-R	LIGHT S-Z	
CLARITY (10x) GRADING SCALE	FL	IF	VVS	VS	SI	I
	FLAWLESS INTERNALLY FLAWLESS	VERY VERY SLIGHTLY INCLUDED	VERY SLIGHTLY INCLUDED	SLIGHTLY INCLUDED	INCLUDED	INCLUDED

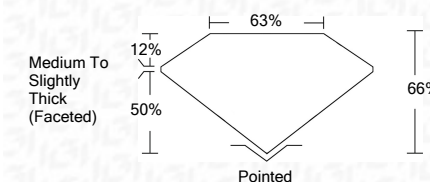


LASERSCRIBESM

Sample Image Used

LABORATORY GROWN DIAMOND REPORT

April 8, 2022	
IGI Report Number	LG522229811
Description	LABORATORY GROWN DIAMOND
Shape and Cutting Style	CUSHION BRILLIANT
Measurements	8.63 X 6.79 X 4.48 MM
GRADING RESULTS	
Carat Weight	2.04 CARATS
Color Grade	G
Clarity Grade	VS 1



ADDITIONAL GRADING INFORMATION

Polish	EXCELLENT
Symmetry	EXCELLENT
Fluorescence	NONE
Inscription(s)	LABGROWN IGI LG522229811

Comments: This Laboratory Grown Diamond was created by Chemical Vapor Deposition (CVD) growth process and may include post-growth treatment.
Type IIa



IGI



April 8, 2022	IGI Report No. LG522229811
	CUSHION BRILLIANT
	8.63 X 6.79 X 4.48 MM
	2.04 CARATS
	G
	VS 1
	66%
	63%
	Medium To Slightly Thick (Faceted)
	Pointed
	EXCELLENT
	EXCELLENT
	NONE
	LABGROWN IGI LG522229811
	Comments:
	This Laboratory Grown Diamond was created by Chemical Vapor Deposition (CVD) growth process and may include post-growth treatment. Type IIa