



**INTERNATIONAL  
GEMOLOGICAL  
INSTITUTE**

**ELECTRONIC COPY**

**LABORATORY GROWN  
DIAMOND REPORT**

**IGI LABORATORY GROWN  
DIAMOND ID REPORT**

April 4, 2022  
IGI Report Number **LG522227194**  
**PEAR BRILLIANT**  
**8.17 X 4.89 X 3.10 MM**  
Carat Weight 0.74 CARAT  
Color Grade FANCY VIVID PINK  
Clarity Grade SI 1  
Polish VERY GOOD  
Symmetry EXCELLENT  
Fluorescence SLIGHT  
Inscription(s) LABGROWN IGI  
LG522227194

Comments: This Laboratory Grown Diamond was created by Chemical Vapor Deposition (CVD) growth process.  
Indications of post-growth treatment.

**LABORATORY GROWN DIAMOND REPORT**

**IGI LABORATORY GROWN DIAMOND IDENTIFICATION REPORT**

April 4, 2022  
IGI Report Number LG522227194  
Description LABORATORY GROWN DIAMOND  
Shape and Cutting Style PEAR BRILLIANT  
Measurements 8.17 X 4.89 X 3.10 MM

**GRADING RESULTS**

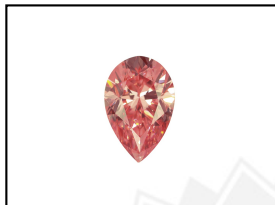
Carat Weight 0.74 CARAT  
Color Grade FANCY VIVID PINK  
Clarity Grade SI 1

**ADDITIONAL GRADING INFORMATION**

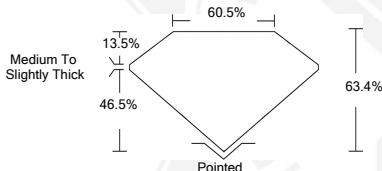
Polish VERY GOOD  
Symmetry EXCELLENT  
Fluorescence SLIGHT  
Inscription(s) LABGROWN IGI LG522227194

Comments: This Laboratory Grown Diamond was created by Chemical Vapor Deposition (CVD) growth process.  
Indications of post-growth treatment.

**LG522227194**



**LASERSCRIBE<sup>SM</sup>**  
Sample Images Used



**IGI LABORATORY GROWN  
DIAMOND ID REPORT**

April 4, 2022  
IGI Report Number **LG522227194**  
**PEAR BRILLIANT**  
**8.17 X 4.89 X 3.10 MM**  
Carat Weight 0.74 CARAT  
Color Grade FANCY VIVID PINK  
Clarity Grade SI 1  
Polish VERY GOOD  
Symmetry EXCELLENT  
Fluorescence SLIGHT  
Inscription(s) LABGROWN IGI  
LG522227194

Comments: This Laboratory Grown Diamond was created by Chemical Vapor Deposition (CVD) growth process.  
Indications of post-growth treatment.

THIS DOCUMENT WAS PRODUCED WITH THE FOLLOWING SECURITY MEASURES: SPECIAL DOCUMENT PAPER, INK SCREENS, WATERMARK, BACKGROUND DESIGN, HOLOGRAM AND OTHER SECURITY FEATURES NOT LISTED AND DO EXCEEDED DOCUMENT SECURITY INDUSTRY GUIDELINES.

For Terms & Conditions and to verify this report, please visit [www.igi.org](http://www.igi.org)