



**INTERNATIONAL  
GEMOLOGICAL  
INSTITUTE**

**LABORATORY GROWN DIAMOND REPORT**

**IGI LABORATORY GROWN DIAMOND IDENTIFICATION REPORT**

April 6, 2022  
 IGI Report Number LG522227156  
 Description LABORATORY GROWN DIAMOND  
 Shape and Cutting Style PEAR BRILLIANT  
 Measurements 7.31 X 4.43 X 2.74 MM

**GRADING RESULTS**

Carat Weight 0.52 CARAT  
 Color Grade FANCY INTENSE PINK  
 Clarity Grade SI 2

**ADDITIONAL GRADING INFORMATION**

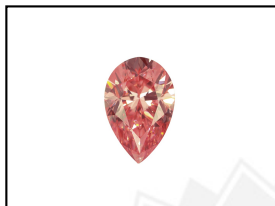
Polish EXCELLENT  
 Symmetry VERY GOOD  
 Fluorescence SLIGHT  
 Inscription(s) LABGROWN IGI LG522227156

Comments: This Laboratory Grown Diamond was created by Chemical Vapor Deposition (CVD) growth process.  
 Indications of post-growth treatment.

**ELECTRONIC COPY**

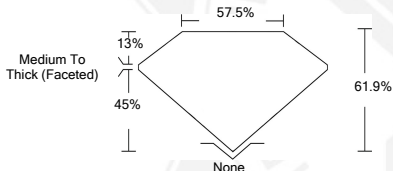
**LABORATORY GROWN  
DIAMOND REPORT**

**LG522227156**



**LABGROWN IGI LG522227156**

**LASERSCRIBE<sup>SM</sup>**  
Sample Images Used



**IGI LABORATORY GROWN  
DIAMOND ID REPORT**

April 6, 2022  
 IGI Report Number **LG522227156**  
**PEAR BRILLIANT**  
**7.31 X 4.43 X 2.74 MM**  
 Carat Weight 0.52 CARAT  
 Color Grade FANCY INTENSE PINK  
 Clarity Grade SI 2  
 Polish EXCELLENT  
 Symmetry VERY GOOD  
 Fluorescence SLIGHT  
 Inscription(s) LABGROWN IGI LG522227156

Comments: This Laboratory Grown Diamond was created by Chemical Vapor Deposition (CVD) growth process.  
 Indications of post-growth treatment.

**IGI LABORATORY GROWN  
DIAMOND ID REPORT**

April 6, 2022  
 IGI Report Number **LG522227156**  
**PEAR BRILLIANT**  
**7.31 X 4.43 X 2.74 MM**  
 Carat Weight 0.52 CARAT  
 Color Grade FANCY INTENSE PINK  
 Clarity Grade SI 2  
 Polish EXCELLENT  
 Symmetry VERY GOOD  
 Fluorescence SLIGHT  
 Inscription(s) LABGROWN IGI LG522227156

Comments: This Laboratory Grown Diamond was created by Chemical Vapor Deposition (CVD) growth process.  
 Indications of post-growth treatment.

THIS DOCUMENT WAS PRODUCED WITH THE FOLLOWING SECURITY MEASURES: SPECIAL DOCUMENT PAPER, INK SCREENS, WATERMARK, BACKGROUND DESIGN, HOLOGRAM AND OTHER SECURITY FEATURES NOT LISTED AND DO EXCEEDED DOCUMENT SECURITY INDUSTRY GUIDELINES.

For Terms & Conditions and to verify this report, please visit [www.igi.org](http://www.igi.org)