



# INTERNATIONAL GEMOLOGICAL INSTITUTE

ELECTRONIC COPY

## LABORATORY GROWN DIAMOND REPORT

LG522227148

### IGI LABORATORY GROWN DIAMOND ID REPORT

April 4, 2022

IGI Report Number **LG522227148**

**OVAL BRILLIANT**

**6.70 X 4.48 X 2.71 MM**

Carat Weight 0.52 CARAT

Color Grade FANCY INTENSE

Clarity Grade VS 1

Polish EXCELLENT

Symmetry EXCELLENT

Fluorescence SLIGHT

Inscription(s) LABGROWN IGI

LG522227148

Comments: This Laboratory Grown Diamond was created by Chemical Vapor Deposition (CVD) growth process.

Indications of post-growth treatment.

## LABORATORY GROWN DIAMOND REPORT

### IGI LABORATORY GROWN DIAMOND IDENTIFICATION REPORT

April 4, 2022

IGI Report Number LG522227148

Description LABORATORY GROWN DIAMOND

Shape and Cutting Style OVAL BRILLIANT

Measurements 6.70 X 4.48 X 2.71 MM

### GRADING RESULTS

Carat Weight 0.52 CARAT

Color Grade FANCY INTENSE PINK

Clarity Grade VS 1

### ADDITIONAL GRADING INFORMATION

Polish EXCELLENT

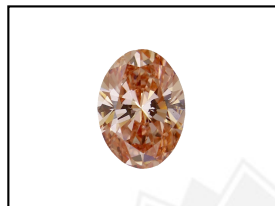
Symmetry EXCELLENT

Fluorescence SLIGHT

Inscription(s) LABGROWN IGI LG522227148

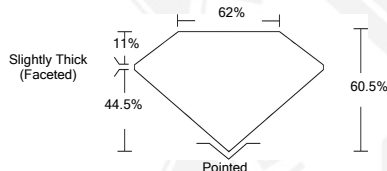
Comments: This Laboratory Grown Diamond was created by Chemical Vapor Deposition (CVD) growth process.

Indications of post-growth treatment.



**LASERSCRIBE<sup>SM</sup>**

Sample Images Used



### IGI LABORATORY GROWN DIAMOND ID REPORT

April 4, 2022

IGI Report Number **LG522227148**

**OVAL BRILLIANT**

**6.70 X 4.48 X 2.71 MM**

Carat Weight 0.52 CARAT

Color Grade FANCY INTENSE

Clarity Grade VS 1

Polish EXCELLENT

Symmetry EXCELLENT

Fluorescence SLIGHT

Inscription(s) LABGROWN IGI

LG522227148

Comments: This Laboratory Grown Diamond was created by Chemical Vapor Deposition (CVD) growth process.

Indications of post-growth treatment.



THIS DOCUMENT WAS PRODUCED WITH THE FOLLOWING SECURITY MEASURES: SPECIAL DOCUMENT PAPER, INK SCREENS, WATERMARK, BACKGROUND DESIGN, HOLOGRAM AND OTHER SECURITY FEATURES NOT LISTED AND DO EXCEED DOCUMENT SECURITY INDUSTRY GUIDELINES.

For Terms & Conditions and to verify this report, please visit [www.igi.org](http://www.igi.org)