



**INTERNATIONAL
GEMOLOGICAL
INSTITUTE**

LABORATORY GROWN DIAMOND REPORT

IGI LABORATORY GROWN DIAMOND IDENTIFICATION REPORT

April 4, 2022
 IGI Report Number LG522227141
 Description LABORATORY GROWN DIAMOND
 Shape and Cutting Style PEAR BRILLIANT
 Measurements 7.88 X 4.78 X 2.95 MM

GRADING RESULTS

Carat Weight 0.63 CARAT
 Color Grade FANCY INTENSE PINK
 Clarity Grade SI 2

ADDITIONAL GRADING INFORMATION

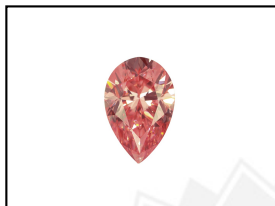
Polish EXCELLENT
 Symmetry EXCELLENT
 Fluorescence SLIGHT
 Inscription(s) LABGROWN IGI LG522227141

Comments: This Laboratory Grown Diamond was created by Chemical Vapor Deposition (CVD) growth process.
 Indications of post-growth treatment.

ELECTRONIC COPY

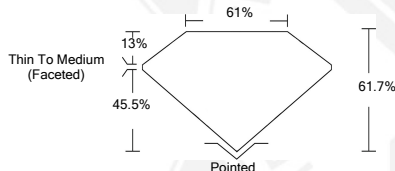
**LABORATORY GROWN
DIAMOND REPORT**

LG522227141



LABGROWN IGI LG522227141

LASERSCRIBESM
Sample Images Used



**IGI LABORATORY GROWN
DIAMOND ID REPORT**

April 4, 2022
 IGI Report Number **LG522227141**
PEAR BRILLIANT
7.88 X 4.78 X 2.95 MM
 Carat Weight 0.63 CARAT
 Color Grade FANCY INTENSE PINK
 Clarity Grade SI 2
 Polish EXCELLENT
 Symmetry EXCELLENT
 Fluorescence SLIGHT
 Inscription(s) LABGROWN IGI LG522227141

Comments: This Laboratory Grown Diamond was created by Chemical Vapor Deposition (CVD) growth process.
 Indications of post-growth treatment.

**IGI LABORATORY GROWN
DIAMOND ID REPORT**

April 4, 2022
 IGI Report Number **LG522227141**
PEAR BRILLIANT
7.88 X 4.78 X 2.95 MM
 Carat Weight 0.63 CARAT
 Color Grade FANCY INTENSE PINK
 Clarity Grade SI 2
 Polish EXCELLENT
 Symmetry EXCELLENT
 Fluorescence SLIGHT
 Inscription(s) LABGROWN IGI LG522227141

Comments: This Laboratory Grown Diamond was created by Chemical Vapor Deposition (CVD) growth process.
 Indications of post-growth treatment.

THIS DOCUMENT WAS PRODUCED WITH THE FOLLOWING SECURITY MEASURES: SPECIAL DOCUMENT PAPER, INK SCREENS, WATERMARK, BACKGROUND DESIGN, HOLOGRAM AND OTHER SECURITY FEATURES NOT LISTED AND DO EXCEED DOCUMENT SECURITY INDUSTRY GUIDELINES.

For Terms & Conditions and to verify this report, please visit www.igi.org