



**INTERNATIONAL
GEMOLOGICAL
INSTITUTE**

ELECTRONIC COPY

**LABORATORY GROWN
DIAMOND REPORT**

**IGI LABORATORY GROWN
DIAMOND ID REPORT**

April 4, 2022
IGI Report Number **LG522227103**

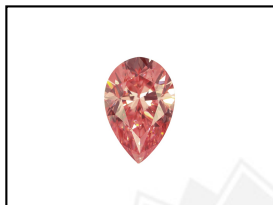
LABORATORY GROWN DIAMOND REPORT

LG522227103

PEAR BRILLIANT
7.56 X 4.66 X 2.75 MM
Carat Weight 0.58 CARAT
Color Grade FANCY INTENSE PINK
Clarity Grade VS 1
Polish EXCELLENT
Symmetry VERY GOOD
Fluorescence SLIGHT
Inscription(s) LABGROWN IGI LG522227103

IGI LABORATORY GROWN DIAMOND IDENTIFICATION REPORT

April 4, 2022
IGI Report Number LG522227103
Description LABORATORY GROWN DIAMOND
Shape and Cutting Style PEAR BRILLIANT
Measurements 7.56 X 4.66 X 2.75 MM



Comments: This Laboratory Grown Diamond was created by Chemical Vapor Deposition (CVD) growth process.
Indications of post-growth treatment.

GRADING RESULTS

Carat Weight 0.58 CARAT
Color Grade FANCY INTENSE PINK
Clarity Grade VS 1



ADDITIONAL GRADING INFORMATION

Polish EXCELLENT
Symmetry VERY GOOD
Fluorescence SLIGHT
Inscription(s) LABGROWN IGI LG522227103

LASERSCRIBESM
Sample Images Used

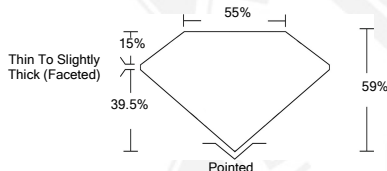


Comments: This Laboratory Grown Diamond was created by Chemical Vapor Deposition (CVD) growth process.
Indications of post-growth treatment.

**IGI LABORATORY GROWN
DIAMOND ID REPORT**

April 4, 2022
IGI Report Number **LG522227103**

PEAR BRILLIANT
7.56 X 4.66 X 2.75 MM
Carat Weight 0.58 CARAT
Color Grade FANCY INTENSE PINK
Clarity Grade VS 1
Polish EXCELLENT
Symmetry VERY GOOD
Fluorescence SLIGHT
Inscription(s) LABGROWN IGI LG522227103



THIS DOCUMENT WAS PRODUCED WITH THE FOLLOWING SECURITY MEASURES: SPECIAL DOCUMENT PAPER, INK SCREENS, WATERMARK, BACKGROUND DESIGN, HOLOGRAM AND OTHER SECURITY FEATURES NOT LISTED AND DO EXCEEDED DOCUMENT SECURITY INDUSTRY GUIDELINES.

For Terms & Conditions and to verify this report, please visit www.igi.org

Comments: This Laboratory Grown Diamond was created by Chemical Vapor Deposition (CVD) growth process.
Indications of post-growth treatment.