

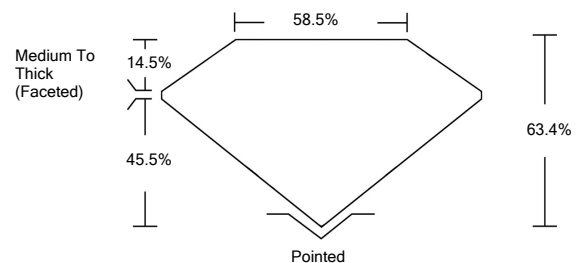


ELECTRONIC COPY

LABORATORY GROWN DIAMOND REPORT

LG519255266

PROPORTIONS



GRADING SCALES

COLOR GRADING SCALE	CL	NC	FT	VLT	LT	
	COLORLESS D-F	NEAR COLORLESS G-J	FAINT K-M	VERY LIGHT N-R	LIGHT S-Z	
CLARITY (10x) GRADING SCALE	FL	IF	VVS	VS	SI	I
	FLAWLESS INTERNALLY FLAWLESS	VERY VERY SLIGHTLY INCLUDED	VERY SLIGHTLY INCLUDED	SLIGHTLY INCLUDED	INCLUDED	

March 19, 2022

IGI Report Number

LG519255266

Description

**LABORATORY GROWN
DIAMOND**

Shape and Cutting Style

**SQUARE CUSHION
BRILLIANT**

Measurements

8.54 X 8.36 X 5.30 MM

GRADING RESULTS

Carat Weight

3.07 CARATS

Color Grade

G

Clarity Grade

VS 1

March 19, 2022

IGI Report Number

LG519255266

Description

**LABORATORY GROWN
DIAMOND**

Shape and Cutting Style

SQUARE CUSHION BRILLIANT

Measurements

8.54 X 8.36 X 5.30 MM

GRADING RESULTS

Carat Weight

3.07 CARATS

Color Grade

G

Clarity Grade

VS 1

ADDITIONAL GRADING INFORMATION

Polish

EXCELLENT

Symmetry

EXCELLENT

Fluorescence

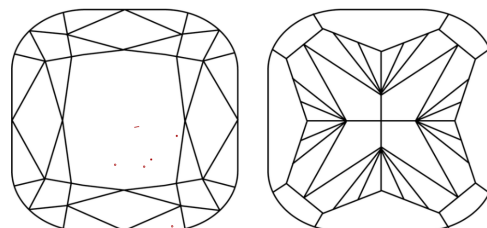
NONE

Inscription(s)

LABGROWN IGI LG519255266

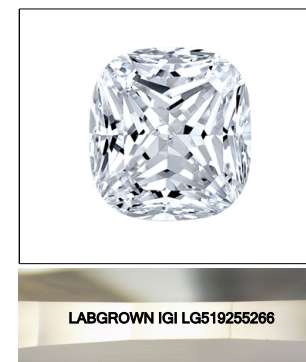
Comments: This Laboratory Grown Diamond was created by Chemical Vapor Deposition (CVD) growth process and may include post-growth treatment.
Type IIa

CLARITY CHARACTERISTICS



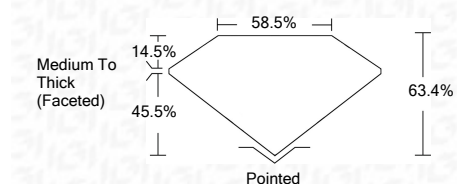
KEY TO SYMBOLS

Red symbols indicate internal characteristics.
Green symbols indicate external characteristics.



LASERSCRIBESM

Sample Image Used



ADDITIONAL GRADING INFORMATION

Polish

EXCELLENT

Symmetry

EXCELLENT

Fluorescence

NONE

Inscription(s)

LABGROWN IGI LG519255266

Comments: This Laboratory Grown Diamond was created by Chemical Vapor Deposition (CVD) growth process and may include post-growth treatment.
Type IIa



IGI



IGI Report No. LG519255266	3.07 CARATS	G
SQUARE CUSHION BRILLIANT	VS 1	
8.54 X 8.36 X 5.30 MM	63.4%	
Carat Weight	58.5%	
Color Grade	Medium To Thick (Faceted)	Pointed
Clarity Grade	EXCELLENT	EXCELLENT
Depth	EXCELLENT	EXCELLENT
Table	NONE	NONE
Girdle	LABGROWN IGI	LABGROWN IGI
Culet	LG519255266	LG519255266
Polish		
Symmetry		
Fluorescence		
Inscription(s)		
Comments:		

This Laboratory Grown Diamond was created by Chemical Vapor Deposition (CVD) growth process and may include post-growth treatment.
Type IIa